

Product datasheet for **TA336486**

Adiponectin (ADIPOQ) Rabbit Polyclonal Antibody

Product data:

Product Type:	Primary Antibodies
Applications:	IF, IHC, WB
Recommended Dilution:	WB: 1-2 ug/ml, FC: 1:10-1:1000, IF: 1:10-1:500, IHC: 1:10-1:500, IHC-P: 10 ug/ml
Reactivity:	Human, Mouse, Rat
Host:	Rabbit
Clonality:	Polyclonal
Immunogen:	A synthetic peptide made to a C-terminal sequence of human Adiponectin (between amino acids 200-244) [UniProt Q15848]
Formulation:	PBS, 0.02% Sodium Azide. Store at 4C short term. Aliquot and store at -20C long term. Avoid freeze-thaw cycles.
Concentration:	lot specific
Purification:	Immunogen affinity purified
Conjugation:	Unconjugated
Storage:	Store at -20°C as received.
Stability:	Stable for 12 months from date of receipt.
Gene Name:	adiponectin, C1Q and collagen domain containing
Database Link:	NP_004788 Entrez Gene 11450 Mouse Entrez Gene 246253 Rat Entrez Gene 9370 Human Q15848
Background:	Adiponectin, also known as 30 kDa adipocyte complement-related protein, adipocyte complement-related 30 kDa protein (ACRP30), adipocyte C1q and collagen domain-containing protein, adipose most abundant gene transcript 1 protein (apM-1), gelatin-binding protein, and ADIPOQ, is an important adipokine involved in the control of fat metabolism and insulin sensitivity. Unlike most other adipokines, Adiponectin is secreted exclusively by differentiating adipocytes at reduced levels during obesity. The amount of adiponectin in serum is inversely correlated with body mass index (BMI) of the individual, and has an anti-inflammatory action, playing an important role in type II diabetes (insulin sensitivity) and atherosclerosis. Defects to the adiponectin gene have been known to cause adiponectin deficiency and non-insulin dependent diabetes mellitus (NIDDM).



[View online »](#)

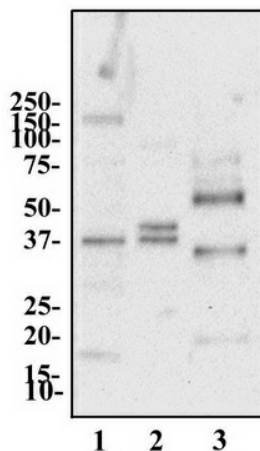
Synonyms: ACDC; ACRP30; ADIPQTL1; ADPN; APM-1; APM1; GBP28

Note: The theoretical molecular weight of Adiponectin is 27, however this protein is highly glycosylated.

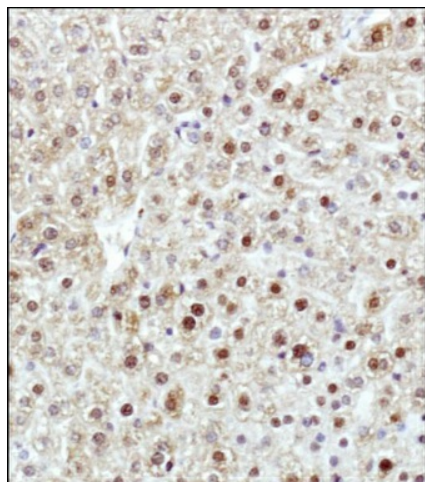
Protein Families: Druggable Genome, Secreted Protein

Protein Pathways: Adipocytokine signaling pathway, PPAR signaling pathway, Type II diabetes mellitus

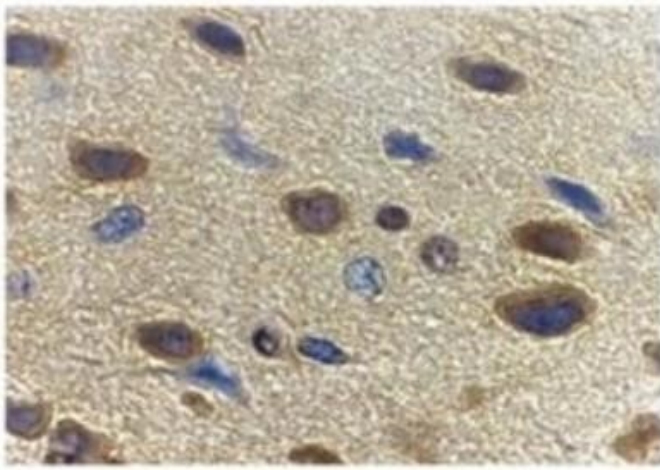
Product images:



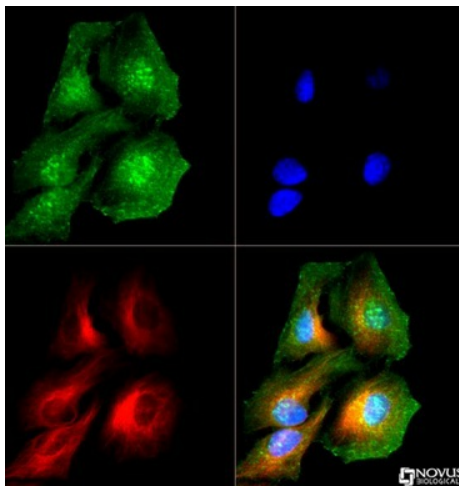
Western Blot: Adiponectin Antibody TA336486 - Western blot analysis of Adiponectin in 1. human liver 2. rat liver 3. HL60



Immunohistochemistry-Paraffin: Adiponectin Antibody TA336486 - IHC analysis of Adiponectin in mouse liver showing nuclear and cytoplasmic staining.



Immunohistochemistry-Paraffin: Adiponectin Antibody TA336486 - Immunohistochemical staining of rat brain with Rabbit anti Human adiponectin.



Immunocytochemistry/Immunofluorescence: Adiponectin Antibody TA336486 - Adiponectin antibody was tested in HeLa cells with Dylight 488 (green). Nuclei and alpha-tubulin were counterstained with DAPI (blue) and Dylight 550 (red). Cytoplasmic, membrane an



Immunocytochemistry/Immunofluorescence: Adiponectin Antibody TA336486 - Immunocytochemical staining of HL60 cells with Rabbit anti Human adiponectin.