

## Product datasheet for **TA336483**

### FOXP1 Mouse Monoclonal Antibody [Clone ID: JC12]

#### Product data:

Product Type:	Primary Antibodies
Clone Name:	JC12
Applications:	CyTOF-ready, FC, ICC/IF, IHC, IP, WB
Recommended Dilution:	Immunocytochemistry/ Immunofluorescence, Immunoprecipitation, Immunohistochemistry-Paraffin: 1:200-1:500, Immunohistochemistry-Frozen: 1:10-1:500, Flow Cytometry: 1 ug per million cells, Immunohistochemistry: 1:10-1:500, Western Blot: 2ug/ml, CyTOF-ready
Reactivity:	Human, Mouse
Host:	Mouse
Isotype:	IgG2a
Clonality:	Monoclonal
Immunogen:	Human FOXP1 [Uniprot# Q9H334]
Formulation:	PBS containing 0.05% BSA, 0.05% Sodium Azide. Store at 4C short term. Aliquot and store at -20C long term. Avoid freeze-thaw cycles.
Concentration:	lot specific
Purification:	Protein G purified
Conjugation:	Unconjugated
Storage:	Store at -20°C as received.
Stability:	Stable for 12 months from date of receipt.
Gene Name:	forkhead box P1
Database Link:	<a href="#">NP_116071</a> <a href="#">Entrez Gene 108655 Mouse</a> <a href="#">Entrez Gene 27086 Human Q9H334</a>



[View online »](#)

**Background:**

FOXP1 is a member of the Forkhead Box Protein family. These proteins are transcription factors that are characterised by a highly conserved forkhead DNA-binding domain. FOXP1 is a repressor of transcription. It forms homodimers, and also heterodimerises with FOXP2 and FOXP4, to facilitate its binding to DNA for transcriptional regulation. A chromosomal aberration involving FOXP1 is found in acute lymphoblastic leukaemia, and FOXP1 is also implicated in mental retardation with language impairment and autistic features (MRLIAF). Chromosomal translocation of FOXP1 is implicated in mucosa-associated lymphoid tissue (MALT) lymphoma.

**Synonyms:**

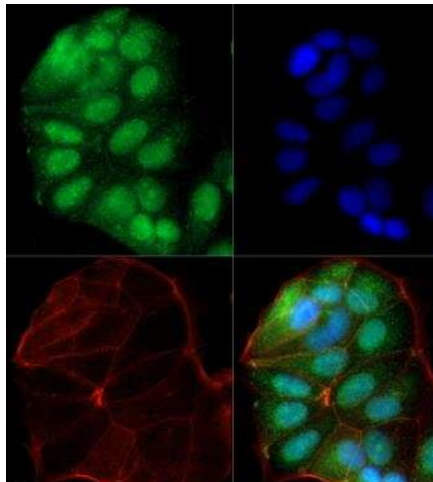
12CC4; hFKH1B; HSPC215; MFH; QRF1

**Note:**

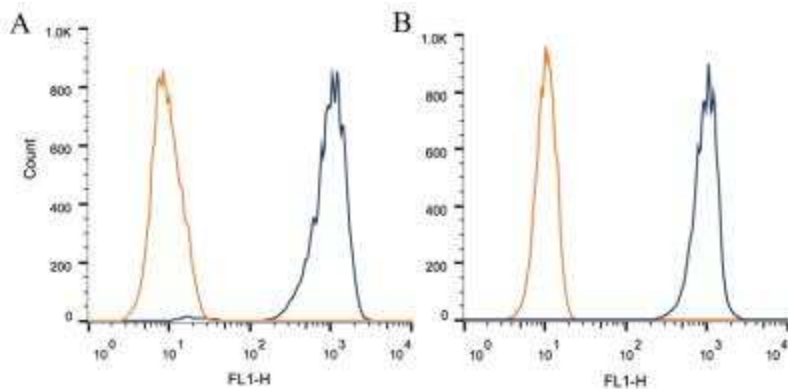
Heat induced antigen retrieval with Sodium Citrate buffer pH 6.0 is recommended when using this antibody for IHC-P.

**Protein Families:**

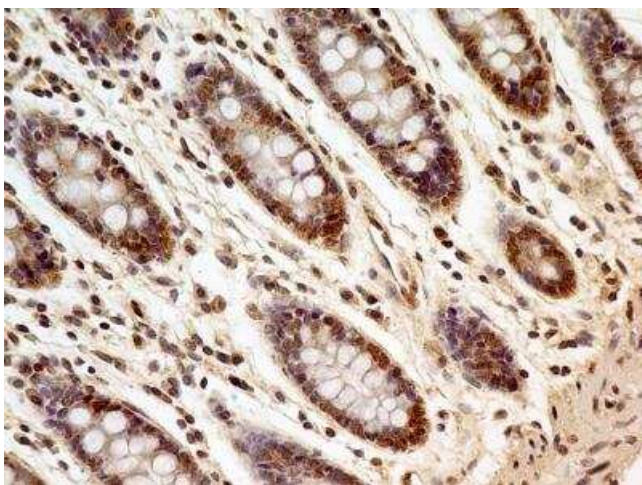
Transcription Factors

**Product images:**


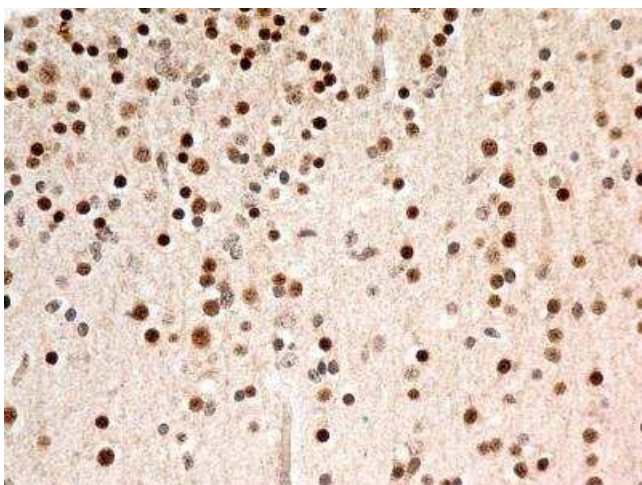
Immunocytochemistry/Immunofluorescence: FOXP1 Antibody (JC12) TA336483 - FOXP1 antibody was tested at 1:25 in MCF-7 cells with Dylight 488 (green). Nuclei and alpha-tubulin were counterstained with DAPI (blue) and Dylight 550 (red). Image objective 40x.



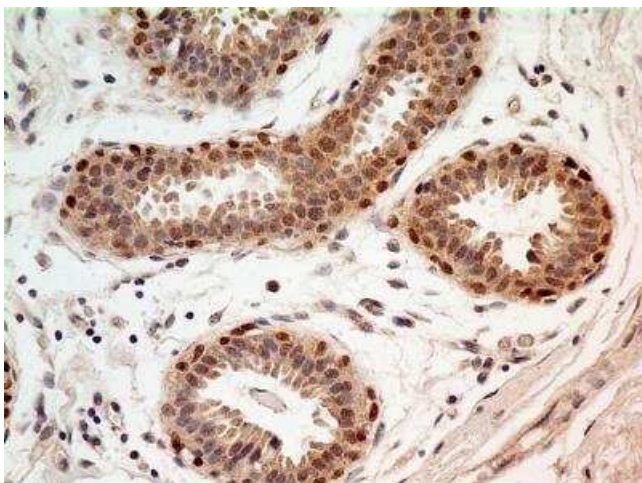
Flow Cytometry: FOXP1 Antibody (JC12) TA336483 - Intracellular flow cytometric staining of  $1 \times 10^6$  CHO (A) and HeLa (B) cells using FOXP1 antibody (dark blue). Isotype control shown in orange. An antibody concentration of  $1 \mu\text{g}/1 \times 10^6$  cells was used.



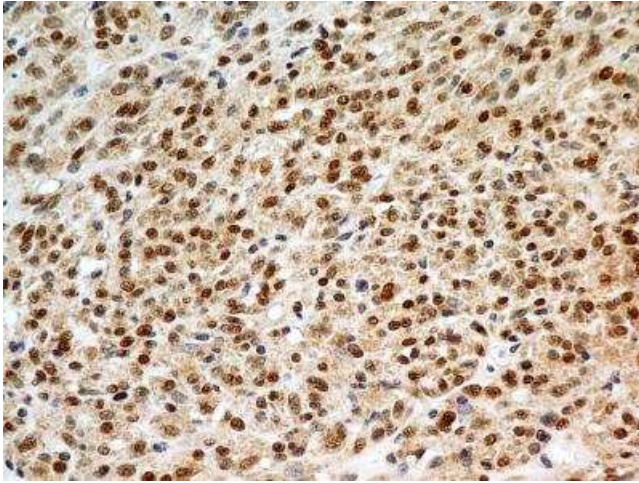
Immunohistochemistry-Paraffin: FOXP1 Antibody (JC12) TA336483 - IHC analysis of formalin-fixed paraffin-embedded tissue section of human normal colon using mouse monoclonal FOXP1 antibody (clone JC12) at 5 ug/ml concentration. Most of the cells depicted an expected strong nuclear with mild cytoplasmic staining.



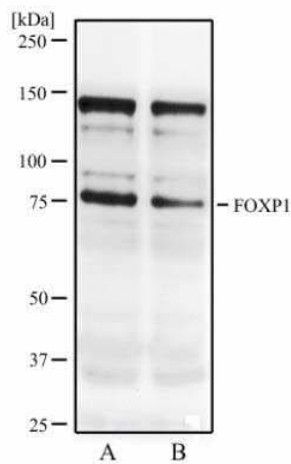
Immunohistochemistry-Paraffin: FOXP1 Antibody (JC12) TA336483 - IHC analysis of formalin-fixed paraffin-embedded tissue section of human normal brain using mouse monoclonal FOXP1 antibody (clone JC12) at 5 ug/ml concentration. The cells in the brain tissue depicted strong specific nuclear along with relatively weak cytoplasmic immunopositivity for FOXP1 protein.



Immunohistochemistry-Paraffin: FOXP1 Antibody (JC12) TA336483 - IHC analysis of formalin-fixed paraffin-embedded tissue section of human normal breast using FOXP1 antibody (clone JC12) at 5 ug/ml concentration. The breast ductal/acinar epithelial cells and the myoepithelial cells developed a strong nuclear along with moderate cytoplasmic immunopositivity for FOXP1 protein.



Immunohistochemistry-Paraffin: FOXP1 Antibody (JC12) TA336483 - IHC analysis of formalin-fixed paraffin-embedded tissue section of malignant stromal tumor of the human small bowel using mouse monoclonal FOXP1 antibody (clone JC12) at 5 ug/ml concentration. The carcinoma cells developed an expected and specific strong nuclear with mild cytoplasmic immunopositivity for FOXP1 protein.



Western Blot: FOXP1 Antibody (JC12) TA336483 - Western blot analysis of resonicated MCF7 cell lysate (A) and MCF7 cell lysate (B) using FOXP1 antibody at 2 ug/ml.