

Product datasheet for **TA336479**

Gremlin 1 (GREM1) Rabbit Polyclonal Antibody

Product data:

Product Type:	Primary Antibodies
Applications:	IHC
Recommended Dilution:	Immunohistochemistry: 1:20-1:1000, Immunohistochemistry-Frozen), Immunohistochemistry-Paraffin: 2.5-10 ug/ml
Reactivity:	Human
Host:	Rabbit
Clonality:	Polyclonal
Immunogen:	A synthetic peptide containing amino acids QPGSRNRGRGQGRGTA (52-67) of human CKTSF1B1 (NM_013372).
Formulation:	PBS containing 0.05% BSA, 0.05% Sodium Azide. Store at 4C short term. Aliquot and store at -20C long term. Avoid freeze-thaw cycles.
Concentration:	lot specific
Purification:	Protein G purified
Conjugation:	Unconjugated
Storage:	Store at -20°C as received.
Stability:	Stable for 12 months from date of receipt.
Gene Name:	gremlin 1, DAN family BMP antagonist
Database Link:	NP_037504 Entrez Gene 26585 Human O60565
Background:	In Xenopus, Gremlin belongs to a novel gene family that act as BMP antagonists in embryonic explants. The human homolog of Drm/Gremlin (CKTFS1B1) is localized on human chromosome 15q13--> q15. DRM-specific mRNA is expressed in different human tissues, including brain, ovary, intestine and colon. It has been suggested that down-regulation of DRM is associated with tumor progression, and support the hypothesis that human DRM may play an important role during both neuroembryological development and carcinogenesis.
Synonyms:	C15DUPq; CKTSF1B1; CRAC1; CRCS4; DAND2; DRM; DUP15q; GREMLIN; HMPS; HMPS1; IHG-2; MP5H; PIG2

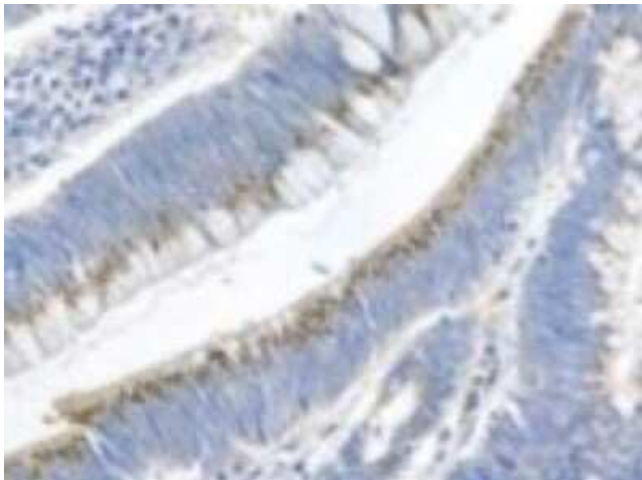


[View online »](#)

Note: Immunohistochemistry cryosections reported in literature (See Namkoong et al, 2006 for antibody usage).

Protein Families: ES Cell Differentiation/IPS, Secreted Protein

Product images:



Immunohistochemistry-Paraffin: Gremlin 1 Antibody TA336479 - Detection of Gremlin in human colon cancer tissue using antibody at 5 ug/ml.