

Product datasheet for **TA336478**

GAPDH Rabbit Polyclonal Antibody

Product data:

Product Type:	Primary Antibodies
Applications:	ICC/IF, IHC, Immunoblotting, Simple Western, WB
Recommended Dilution:	Simple Western: 1:500, Immunohistochemistry, Western Blot: 1:500-1:2000, Immunoblotting, Immunocytochemistry/ Immunofluorescence
Reactivity:	Human, Mouse, Rat, Drosophila, Feline, Porcine, Protozoa
Host:	Rabbit
Clonality:	Polyclonal
Immunogen:	Amino acids 73-87 PITIFQERDPSKIKW of glyceraldehyde 3-phosphate dehydrogenase protein were used as the immunogen.
Formulation:	PBS containing 0.05% BSA, 0.05% Sodium Azide. Store at 4C short term. Aliquot and store at -20C long term. Avoid freeze-thaw cycles.
Concentration:	lot specific
Purification:	Protein G purified
Conjugation:	Unconjugated
Storage:	Store at -20°C as received.
Stability:	Stable for 12 months from date of receipt.
Gene Name:	glyceraldehyde-3-phosphate dehydrogenase
Database Link:	NP_002037 Entrez Gene 14433 Mouse Entrez Gene 24383 Rat Entrez Gene 2597 Human P04406



[View online »](#)

Background:

Glyceraldehyde-3-phosphate dehydrogenase (GAPDH) catalyzes the reversible oxidative phosphorylation of glyceraldehyde-3-phosphate in the presence of inorganic phosphate and nicotinamide adenine dinucleotide (NAD), an important energy-yielding step in carbohydrate metabolism. Recent evidence suggests that it also is involved in a number of cellular processes such as membrane fusion, phosphotransferase activity, DNA replication and repair, and nuclear RNA export. GAPDH has also been implicated in playing a role in different pathologies such as cancer progression, apoptosis, and neuronal diseases such as Alzheimer's and Huntington's disease. GAPDH is constitutively expressed at high levels in almost all tissues and cell lines making it ideal for use as a loading control marker in immunoblots.

Synonyms:

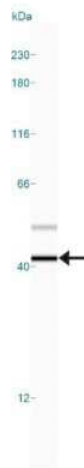
G3PD; GAPD; HEL-S-162eP

Protein Families:

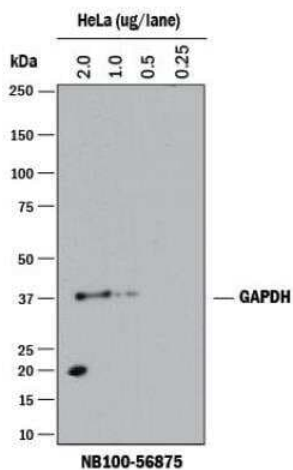
ES Cell Differentiation/IPS

Protein Pathways:

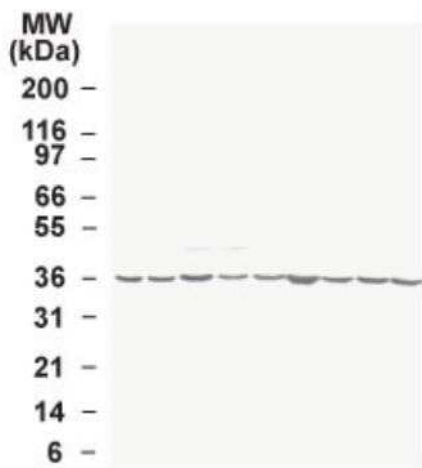
Alzheimer's disease, Glycolysis / Gluconeogenesis, Metabolic pathways

Product images:

Simple Western: GAPDH Antibody TA336478 - Lane view shows a specific band for GAPDH in 0.5 mg/ml of HeLa lysate. This experiment was performed under reducing A246 conditions using the 12-230 kDa separation system. Note: band observed higher than predicted 36 kDa molecular weight.



Western Blot: GAPDH Antibody TA336478 - Analysis using HeLa cells. Theoretical molecular weight: 36 kDa.



Western Blot: GAPDH Antibody TA336478 - Analysis of GAPDH in the multiple human tumor cell line lysate INSTA-Blot using this antibody. 25 ug/ml. Theoretical molecular weight: 36 kDa.