

Product datasheet for **TA336469**

NFAT2 (NFATC1) Rabbit Polyclonal Antibody

Product data:

Product Type:	Primary Antibodies
Applications:	ICC/IF, IHC, Simple Western, WB
Recommended Dilution:	Simple Western: 1:100, Immunocytochemistry/ Immunofluorescence: 1:20, Western Blot: 1-3 ug/ml, Immunohistochemistry
Reactivity:	Human, Mouse
Host:	Rabbit
Clonality:	Polyclonal
Immunogen:	Amino acids 264-282 (NKRKYSLNGRQPPYSPHHS) of human NFATc1 were used as immunogen for this antibody.
Formulation:	PBS containing 0.05% BSA, 0.05% Sodium Azide. Store at 4C short term. Aliquot and store at -20C long term. Avoid freeze-thaw cycles.
Concentration:	lot specific
Purification:	Protein G purified
Conjugation:	Unconjugated
Storage:	Store at -20°C as received.
Stability:	Stable for 12 months from date of receipt.
Gene Name:	nuclear factor of activated T-cells 1
Database Link:	NP_765976 Entrez Gene 18018 Mouse Entrez Gene 4772 Human O95644
Background:	NFAT (nuclear factor of activated T cell) transcription factors play critical roles in gene transcription during immune responses. The NFAT complex is made up of NFATc (NFATc1 - 4) and AP-1 transcription factor. NFAT proteins are regulated by Ca ²⁺ . NFATc1 is a substrate protein phosphatase calcineurin, a critical mediator of calcium signals during Tcell activation. NFATc1 activation requires the translocation of the transcription factor into the nucleus, a process that is mediated by calcineurin.
Synonyms:	NF-ATC; NF-ATc1.2; NFAT2; NFATc



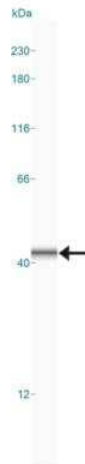
[View online »](#)

Note: Immunoreactive bands can be blocked by preincubation of NB100-56732 with immunizing peptide. The NFATc1 antibody may detect multiple isoforms of different sizes depending upon testing material.

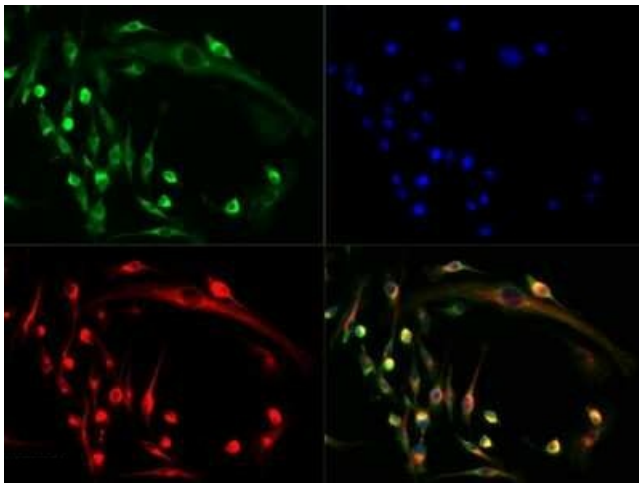
Protein Families: Druggable Genome, Transcription Factors

Protein Pathways: Axon guidance, B cell receptor signaling pathway, Natural killer cell mediated cytotoxicity, T cell receptor signaling pathway, VEGF signaling pathway, Wnt signaling pathway

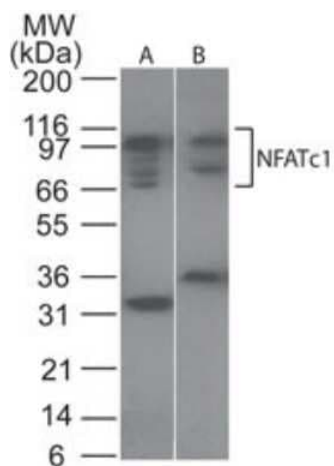
Product images:



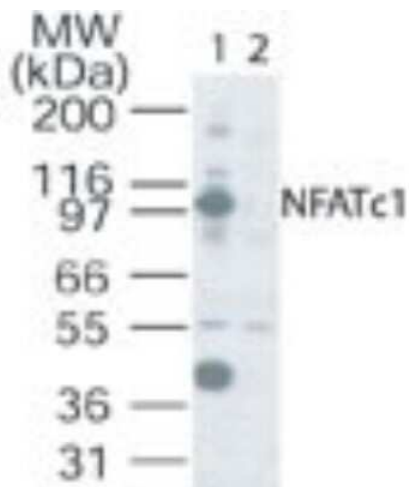
Simple Western: NFATC1/NFAT2 Antibody TA336469 - Lane view shows a specific band for NFAT2 in 0.5 mg/ml of RAW lysate. This experiment was performed under reducing conditions using the 12-230 kDa separation system.



Immunocytochemistry/Immunofluorescence: NFATC1/NFAT2 Antibody TA336469 - NFAT2 antibody was tested in Raw 246.7 cells with DyLight 488 (green). Nuclei and alpha-tubulin were counterstained with DAPI (blue) and DyLight 550 (red). Image objective 40x. An antibody dilution of 1:10 was used.



Western Blot: NFATC1/NFAT2 Antibody TA336469
 - Analysis of human (A)Ramos and (B) mouse RAW lysate using NFATc1 antibody at 1 ug/ml.



Western Blot: NFATC1/NFAT2 Antibody TA336469
 - Analysis of NFATc1 in Ramos cell lysate. (1) Without blocking peptide. (2) With blocking peptide.