

## Product datasheet for **TA336468**

### TIRAP Mouse Monoclonal Antibody [Clone ID: 20D1055.1]

#### Product data:

Product Type:	Primary Antibodies
Clone Name:	20D1055.1
Applications:	WB
Recommended Dilution:	Western Blot: 1:500-1:1000
Reactivity:	Human
Host:	Mouse
Isotype:	IgM, kappa
Clonality:	Monoclonal
Immunogen:	This antibody was developed against a synthetic peptide corresponding to a portion of human TIRAP.
Formulation:	Preservative: 0.05% Sodium Azide. Aliquot and store at -20C or -80C. Avoid freeze-thaw cycles.
Concentration:	lot specific
Purification:	Ascites
Conjugation:	Unconjugated
Storage:	Store at -20°C as received.
Stability:	Stable for 12 months from date of receipt.
Gene Name:	toll-interleukin 1 receptor (TIR) domain containing adaptor protein
Database Link:	<a href="#">NP_001034750</a> <a href="#">Entrez Gene 114609 Human</a> <a href="#">P58753</a>



[View online »](#)

**Background:**

The Toll-like receptor (TLR) family in mammal comprises a family of transmembrane proteins characterized by multiple copies of leucine rich repeats in the extracellular domain and IL-1 receptor motif in the cytoplasmic domain. Like its counterparts in *Drosophila*, TLRs signal through adaptor molecules (1). The TLR family is a phylogenetically conserved mediator of innate immunity that is essential for microbial recognition (2). Ten human homologs of TLRs (TLR1-10) have been described (3). TIRAP (TIR domain-containing adaptor protein) is an adaptor protein used by TLR4. Blocking TIRAP inhibits TLR4-mediated signaling events, including DC maturation and cytokine production (4). It has 235 amino acids and is commonly seen as a 32-37 kD protein (4).

**Synonyms:**

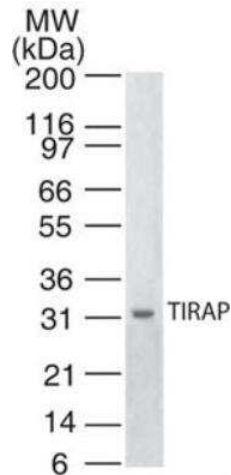
BACTS1; Mal; MyD88-2; wyatt

**Protein Families:**

Druggable Genome

**Protein Pathways:**

Toll-like receptor signaling pathway

**Product images:**

Western Blot: TIRAP Antibody (20D1055.1)  
TA336468 - Analysis of TIRAP in human spleen  
lysate using this antibody.