

Product datasheet for **TA336463**

TLR4 Mouse Monoclonal Antibody [Clone ID: HTA125]

Product data:

Product Type:	Primary Antibodies
Clone Name:	HTA125
Applications:	FC
Recommended Dilution:	FC: 2-3 ug/10 ⁶ cells, IF: 1:10-1:2000, IP: 1:10-1:500
Reactivity:	Human, Canine
Host:	Mouse
Isotype:	IgG2a
Clonality:	Monoclonal
Immunogen:	This antibody was developed by immunizing mice with Ba/F3 cell line expressing human TLR4 cell surface antigen.
Formulation:	PBS containing 0.05% BSA, 0.05% Sodium Azide. Store at 4C short term. Aliquot and store at -20C long term. Avoid freeze-thaw cycles.
Concentration:	lot specific
Purification:	Protein G purified
Conjugation:	Unconjugated
Storage:	Store at -20°C as received.
Stability:	Stable for 12 months from date of receipt.
Gene Name:	toll like receptor 4
Database Link:	NP_612564 Entrez Gene 7099 Human O00206



[View online »](#)

Background:

The Toll-like receptor (TLR) family in mammal comprises a family of transmembrane proteins characterized by multiple copies of leucine rich repeats in the extracellular domain and IL-1 receptor motif in the cytoplasmic domain. Like its counterparts in *Drosophila*, TLRs signal through adaptor molecules (1). The TLR family is a phylogenetically conserved mediator of innate immunity that is essential for microbial recognition (2). Ten human homologs of TLRs (TLR1-10) have been described (3). Among this family of receptors, TLR2 and TLR4 have been most studied. These studies have suggested that TLR2 and TLR4 may serve as potential main mediators of LPS signaling (4,5). The TLR4 cDNA codes for a protein consisting of 799 amino acids with approximate molecular weight of 88 kDa (6).

Synonyms:

ARMD10; CD284; TLR-4; TOLL

Note:

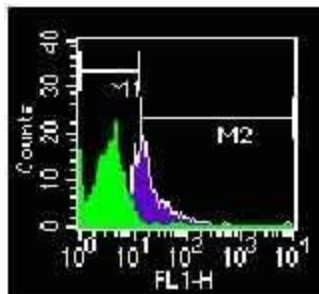
Confocal Microscopy: see Scheel et al. (2006) for details FA (Neutralization): please Basek et al, 2005 for details. Flow (Cell Surface): 2-5 ug/ 1×10^6 cells IF/ICC: please see Schneeman et al (2005) for details. IP: please see Shimazu et al, 1999 for details Use in vitro assays reported in scientific literature (PMID 24676500)

Protein Families:

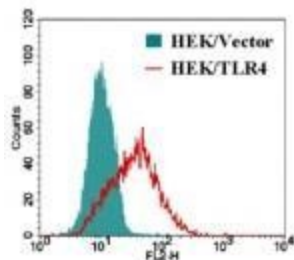
Druggable Genome, Transmembrane

Protein Pathways:

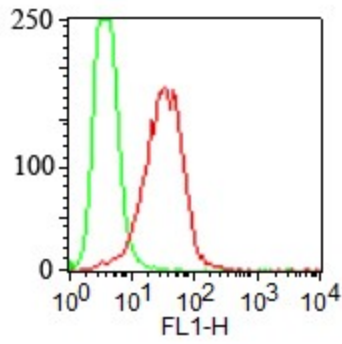
Pathogenic *Escherichia coli* infection, Toll-like receptor signaling pathway

Product images:


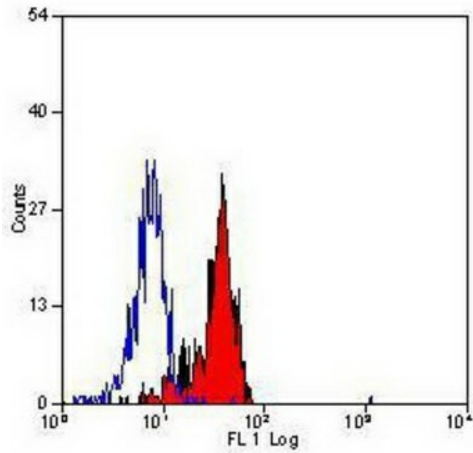
Flow Cytometry: TLR4 Antibody (HTA125) TA336463 - Analysis of TLR4 using TA336463 on PBMCs at 2ug/ 1×10^6 cells. M1 gate are unstained PBMC.



Flow Cytometry: TLR4 Antibody (HTA125) TA336463 - Cell surface analysis of TLR4 in stable HEK293/hTLR4 cells using TA336463 at 1 ug/ 10^6 cells. Secondary antibody Goat anti-Mouse IgG-PE at 0.25ug/ 10^6 cells.



Flow Cytometry: TLR4 Antibody (HTA125)
TA336463 - Cell surface analysis of TLR4 in stable HEK293/hTLR4 cells using this antibody. Secondary antibody goat anti-mouse IgG-PE at 0.25ug/10⁶ cells. Both stable HEK293/hTLR4 and HEK293/Vector cell lines were



Flow Cytometry: TLR4 Antibody (HTA125)
TA336463 - Staining of human peripheral blood monocytes with Mouse anti Human CD284: Low Endotoxin.