

Product datasheet for **TA336447**

TLR7 Rabbit Polyclonal Antibody

Product data:

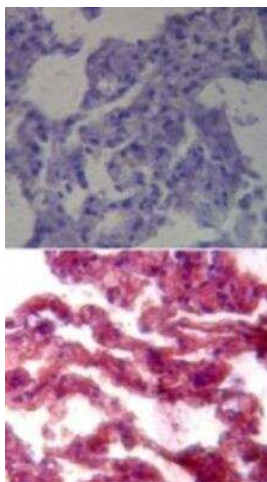
Product Type:	Primary Antibodies
Applications:	FC, ICC/IF, IHC, WB
Recommended Dilution:	Western Blot: 1:500-1:1000, Immunohistochemistry-Paraffin: 1:100, Flow Cytometry, Immunohistochemistry, Immunocytochemistry/ Immunofluorescence
Reactivity:	Human, Mouse
Host:	Rabbit
Clonality:	Polyclonal
Immunogen:	This antibody was developed against KLH-conjugated synthetic peptide corresponding to amino acids 465-483 of human TLR7.
Formulation:	PBS containing 0.05% BSA, 0.05% Sodium Azide. Store at 4C short term. Aliquot and store at -20C long term. Avoid freeze-thaw cycles.
Concentration:	lot specific
Purification:	Protein G purified
Conjugation:	Unconjugated
Storage:	Store at -20°C as received.
Stability:	Stable for 12 months from date of receipt.
Gene Name:	toll like receptor 7
Database Link:	NP_057646 Entrez Gene 170743 Mouse Entrez Gene 51284 Human Q9NYK1

Background: The Toll-like receptor (TLR) family in mammal comprises a family of transmembrane proteins characterized by multiple copies of leucine rich repeats in the extracellular domain and IL-1 receptor motif in the cytoplasmic domain. Like its counterparts in Drosophila, TLRs signal through adaptor molecules (1) and could constitute an important and unrecognized component of innate immunity in humans. The TLR family is a phylogenetically conserved mediator of innate immunity that is essential for microbial recognition (2). TLRs characterized so far activate the MyD88/interleukin-1 receptor-associated kinase (IRAK) signaling pathway. Ten human homologs of TLRs (TLR1-10) have been described (3). Stimulation of the NFκB signaling pathway by TLR7 suggests that it plays a role in immune response.

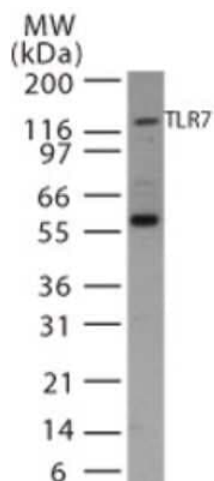


[View online »](#)

Synonyms: TLR7-like
Protein Families: Druggable Genome, Transmembrane
Protein Pathways: Toll-like receptor signaling pathway

Product images:


Immunohistochemistry-Paraffin: TLR7 Antibody TA336447 - Analysis of TLR7 in formalin-fixed, paraffin-embedded human lung tissue using an isotype control (top) and this antibody (bottom) at 1:100.



Western Blot: TLR7 Antibody TA336447 - Analysis of TLR7 in Ramos cell lysate using TA336447 at 1:500.