

Product datasheet for **TA336442**

Pellino 1 (PELI1) Rabbit Polyclonal Antibody

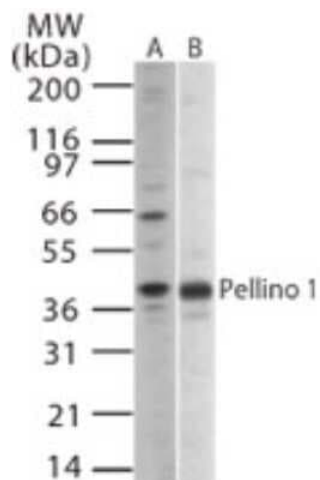
Product data:

Product Type:	Primary Antibodies
Applications:	IHC, WB
Recommended Dilution:	Western Blot: 1:500-1:1000, Immunohistochemistry-Paraffin: 1:100, Immunohistochemistry
Reactivity:	Human, Mouse
Host:	Rabbit
Clonality:	Polyclonal
Immunogen:	This antibody was developed against KLH-conjugated synthetic peptide corresponding to a portion of amino acids 100-150 of human Pellino 1 (Peli1), Genbank No. NP_065702.2.
Formulation:	Store at 4C short term. Aliquot and store at -20C long term. Avoid freeze-thaw cycles.
Concentration:	lot specific
Purification:	Whole antisera
Conjugation:	Unconjugated
Storage:	Store at -20°C as received.
Stability:	Stable for 12 months from date of receipt.
Gene Name:	pellino E3 ubiquitin protein ligase 1
Database Link:	NP_065702 Entrez Gene 67245 Mouse Entrez Gene 57162 Human Q96FA3
Background:	Pellino 1, also called Peli1, is the mammalian homologue of Pellino, a Drosophila Pelle-interacting protein. Pelle is a serine-threonine kinase through which Toll signaling can occur.
Synonyms:	DKFZp686C18116; MGC50990

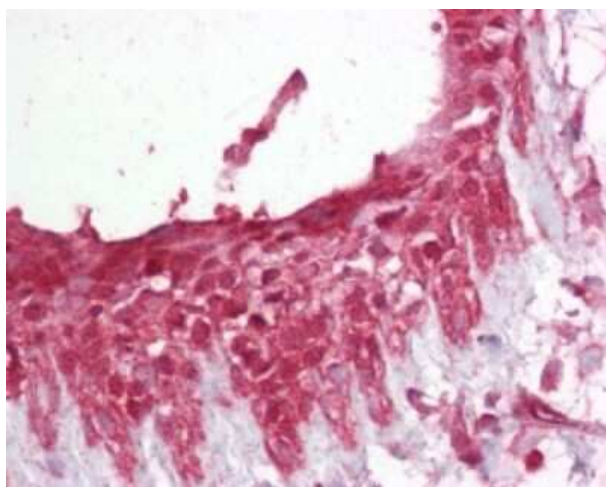


[View online »](#)

Product images:



Western Blot: Pellino 1 Antibody TA336442 - Analysis of Pellino 1 (Peli1) in human Ramos lysate (A) and mouse RAW lysate (B) using Pellino 1 antibody at 1:1000.



Immunohistochemistry-Paraffin: Pellino 1 Antibody TA336442 - Analysis of human breast using Pellino 1 antibody at 1:100.