

Product datasheet for **TA336434**

PRMT6 Rabbit Polyclonal Antibody

Product data:

Product Type:	Primary Antibodies
Applications:	WB
Recommended Dilution:	Western Blot: 1:500-1:1000, In vitro assay
Reactivity:	Human, Mouse
Host:	Rabbit
Clonality:	Polyclonal
Immunogen:	This antibody was developed a synthetic peptide corresponding to amino acids 23-43 (CEEDGAEREALERPRRTKRER) of human PRMT6.
Formulation:	Store at 4C short term. Aliquot and store at -20C long term. Avoid freeze-thaw cycles.
Concentration:	lot specific
Purification:	Whole antisera
Conjugation:	Unconjugated
Storage:	Store at -20°C as received.
Stability:	Stable for 12 months from date of receipt.
Gene Name:	protein arginine methyltransferase 6
Database Link:	NP_060607 Entrez Gene 99890 Mouse Entrez Gene 55170 Human Q96LA8



[View online »](#)

Background:

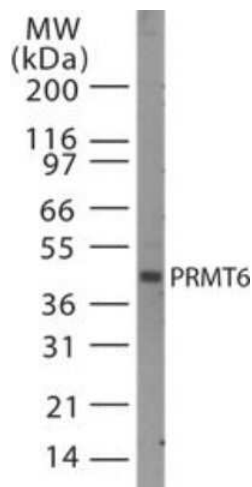
Protein arginine methylation is an important posttranslational modification in eukaryotic cells, which has been implicated in RNA processing and trafficking, receptor-mediated signaling, and transcription. PRMT6 was identified by searching the human genome for protein arginine N-methyltransferase (PRMT) family members. PRMT6 cDNA codes for a protein of approximate molecular weight of 42 kDa consisting of a catalytic core sequence common to other PRMT enzymes. PRMT6 demonstrates type I PRMT activity, capable of forming both >NG-monomethylarginine and asymmetric >NG,NG-dimethylarginine derivatives on the recombinant glycine- and arginine-rich substrates. A comparison of substrate specificity reveals that PRMT6 is functionally distinct from two previously characterized type I enzymes, PRMT1 and PRMT4. In addition to methylating substrate proteins, PRMT6 displays automethylation activity. GFP-fusion protein expression in the transfected cell lines suggest that PRMT6 localizes in the nucleus.

Synonyms:

HRMT1L6

Protein Families:

Druggable Genome

Product images:

Western Blot: PRMT6 Antibody TA336434 - Analysis of PRMT6 in HeLa lysate using PRMT6 antibody at 1:500 dilution.