

Product datasheet for **TA336433**

SOCS1 Rabbit Polyclonal Antibody

Product data:

Product Type:	Primary Antibodies
Applications:	WB
Recommended Dilution:	Western Blot: 1:500-1:1000
Reactivity:	Human, Mouse
Host:	Rabbit
Clonality:	Polyclonal
Immunogen:	A synthetic peptide corresponding to amino acids 54-68 (HFRTFRSHADYRRIT) of human SOCS1 was used as immunogen (NP_003736.1)
Formulation:	Store at 4C short term. Aliquot and store at -20C long term. Avoid freeze-thaw cycles.
Concentration:	lot specific
Purification:	Whole antisera
Conjugation:	Unconjugated
Storage:	Store at -20°C as received.
Stability:	Stable for 12 months from date of receipt.
Predicted Protein Size:	23.55 kDa
Gene Name:	suppressor of cytokine signaling 1
Database Link:	NP_003736 Entrez Gene 12703 Mouse Entrez Gene 8651 Human O15524



[View online »](#)

Background:

The suppressor of cytokine signaling (SOCS) family of proteins (SOCS1-SOCS7 and CIS) inhibit cytokine production by a classical negative feedback mechanism. These proteins are upregulated in response to cytokine stimulation followed by inhibition of cytokine-inducing signal pathway. Role of each members of the family has been determined by gene knockout experiments (1). SOCS1 also known as JAB and (STAT)-induced STAT inhibitor 1 (SSI-1) is an SH2-domain-containing protein that is induced by and negatively regulates signaling by a number of cytokines including interleukin-4 (IL-4), IL-6, interferon (IFN)-gamma, prolactin, growth hormone, and erythropoietin (1). SOCS1/JAB is rapidly induced by LPS and negatively regulates LPS signaling (2). SOCS1 (-/-) mice are very sensitive to LPS. These mice die prematurely, probably due to uncontrolled IFN-g signaling (3).

Synonyms:

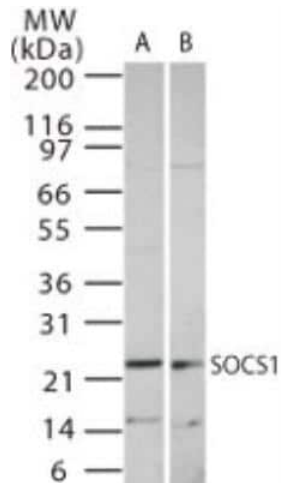
CIS1; CISH1; JAB; SOCS-1; SSI-1; SSI1; TIP3

Protein Families:

Druggable Genome, Stem cell - Pluripotency, Stem cell relevant signaling - JAK/STAT signaling pathway

Protein Pathways:

Insulin signaling pathway, Jak-STAT signaling pathway, Type II diabetes mellitus, Ubiquitin mediated proteolysis

Product images:

Western Blot: SOCS-1 Antibody TA336433 - Analysis of SOCS-1 using TA336433 at 1:1000 dilution against 15 ug/lane of Ramos (A) and Raw (B) cell lysate.