

Product datasheet for **TA336426**

PARP1 Mouse Monoclonal Antibody [Clone ID: 194C1439]

Product data:

Product Type:	Primary Antibodies
Clone Name:	194C1439
Applications:	FC, ICC/IF, WB
Recommended Dilution:	Western Blot: 1 - 2 ug/mL, Flow Cytometry, Flow (Intracellular): 1 - 10 ug/1x10 ⁶ cells, Immunocytochemistry/ Immunofluorescence: 2-5 ug/ml
Reactivity:	Human
Host:	Mouse
Isotype:	IgG2b, kappa
Clonality:	Monoclonal
Immunogen:	This antibody was developed by immunizing mice with a synthetic peptide containing amino acids near 214/215-cleavage site of human PARP.
Formulation:	PBS containing 0.05% Sodium Azide. Store at 4C short term. Aliquot and store at -20C long term. Avoid freeze-thaw cycles.
Concentration:	lot specific
Purification:	Protein G purified
Conjugation:	Unconjugated
Storage:	Store at -20°C as received.
Stability:	Stable for 12 months from date of receipt.
Gene Name:	poly(ADP-ribose) polymerase 1
Database Link:	NP_001609 Entrez Gene 142 Human P09874



[View online »](#)

Background:

The poly (ADP-ribose) polymerase (PARP) is involved in cell recovery from DNA damage, such as methylation of N3-adenine, which activates the base excision repair process. PARP [Poly (ADP-ribose) polymerase] is a 116 kDa nuclear chromatin-associated enzyme that is cleaved during apoptosis by caspase-3 into a 24 kDa fragment containing the DNA binding domain and an 89 kDa fragment containing the catalytic and automodification domains. The 24 kDa-fragment irreversibly bind to DNA and may contribute to the irreversibility of apoptosis by blocking the access of DNA repair enzymes to DNA strand breaks.

Synonyms:

ADPRT; ADPRT 1; ADPRT1; ARTD1; pADPRT-1; PARP; PARP-1; PPOL

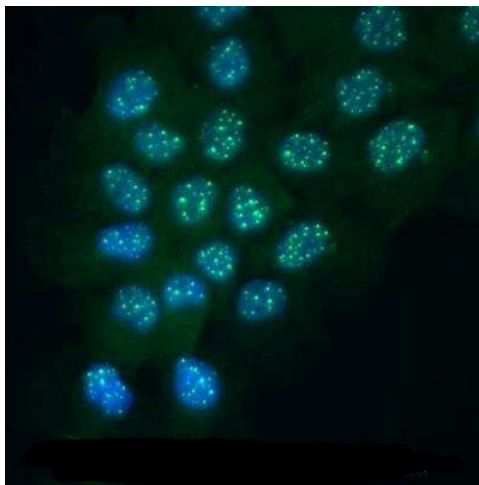
Protein Families:

Druggable Genome, Stem cell - Pluripotency, Transcription Factors

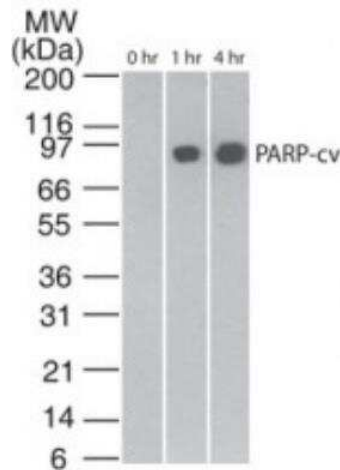
Protein Pathways:

Base excision repair

Product images:



Immunocytochemistry/Immunofluorescence: PARP Antibody (194C1439) - Cleaved TA336426 - A431 cells were fixed for 10 minutes using 10% formalin and then permeabilized for 5 minutes using 1X PBS + 0.5% Triton-X100. The cells were incubated with anti-PARP Antibody (194C1439) at 5 ug/ml overnight at 4C and detected with an anti-mouse Dylight 488 (Green) at a 1:500 dilution. Nuclei were counterstained with DAPI (Blue). Cells were imaged using a 40X objective.



Western Blot: PARP Antibody (194C1439) - Cleaved TA336426 - Analysis of cleaved PARP in staurosporine-treated Jurkat cells at various time points, antibody at 2 ug/mL. The band corresponding to cleaved PARP is only seen in the treated samples. Anti-mouse Ig HRP conjugate was used in this test.