

Product datasheet for **TA336425**

Rb (RB1) Mouse Monoclonal Antibody [Clone ID: 172C1094]

Product data:

Product Type:	Primary Antibodies
Clone Name:	172C1094
Applications:	IHC, WB
Recommended Dilution:	Immunohistochemistry-Paraffin, Immunohistochemistry-Frozen: 1:10-1:500, Immunohistochemistry: 1:10-1:500, Western Blot: 2 ug/ml, Knockdown Validated
Reactivity:	Human, Mouse
Host:	Mouse
Isotype:	IgG1
Clonality:	Monoclonal
Immunogen:	A synthetic peptide corresponding to a region of the caspase-3-induced cleavage site of human Rb was used as immunogen.
Formulation:	PBS containing 0.05% BSA, 0.05% Sodium Azide. Store at 4C short term. Aliquot and store at -20C long term. Avoid freeze-thaw cycles.
Concentration:	lot specific
Purification:	Protein G purified
Conjugation:	Unconjugated
Storage:	Store at -20°C as received.
Stability:	Stable for 12 months from date of receipt.
Gene Name:	RB transcriptional corepressor 1
Database Link:	NP_000312 Entrez Gene 19645 Mouse Entrez Gene 5925 Human P06400
Background:	The retinoblastoma gene product (Rb) is a tumor suppressor protein and acts as cell cycle regulator. Recently, Rb has been shown to play a role in apoptosis. During apoptosis, Rb is subjected to cleavage by caspase-3 like protease. Caspase-3 cleaves Rb into 48 and 68kDa fragments. Cleavage of Rb would make it functionally inactive, causing release of E2F-1. The E2F-1 then may promote apoptosis.
Synonyms:	OSRC; p105-Rb; pp110; PPP1R130; pRb; RB

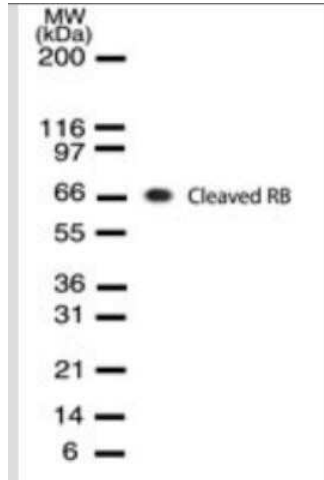


[View online »](#)

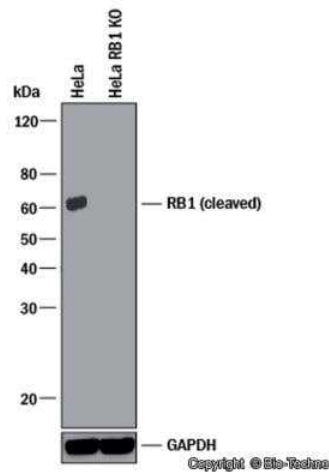
Protein Families: Druggable Genome, Transcription Factors

Protein Pathways: Bladder cancer, Cell cycle, Chronic myeloid leukemia, Glioma, Melanoma, Non-small cell lung cancer, Pancreatic cancer, Pathways in cancer, Prostate cancer, Small cell lung cancer

Product images:



Western Blot: cleaved Retinoblastoma 1 Antibody (172C1094) TA336425 - Analysis in HL60 cells were treated with camptothecin for 24 hours.



Knockdown Validated: RB1 Antibody (172C1094) - (cleaved) TA336425 - Western blot shows lysates of HeLa human cervical epithelial carcinoma parental cell line and RB-1 knockout (KO) HeLa cell line. PVDF membrane was probed with 2 ug/ml of Mouse Anti-Human RB-1 Monoclonal Antibody (Catalog # TA336425) followed by HRP-conjugated Anti-Mouse IgG Secondary Antibody (Catalog #HAF018). Specific band was detected for RB-1 at approximately 60 kDa (as indicated) in the parental HeLa cell line, but is not detectable in the knockout HeLa cell line. This experiment was conducted under reducing conditions.