

## Product datasheet for **TA336418**

### TEM8 (ANTXR1) Mouse Monoclonal Antibody [Clone ID: 200C1339(SB20)]

#### Product data:

Product Type:	Primary Antibodies
Clone Name:	200C1339(SB20)
Applications:	IHC, WB
Recommended Dilution:	Western Blot: 1-3 ug/ml, Immunohistochemistry: 2-5 ug/ml, Immunohistochemistry-Paraffin: 2-5 ug/ml, Immunocytochemistry/ Immunofluorescence)
Reactivity:	Human
Host:	Mouse
Isotype:	IgG1
Clonality:	Monoclonal
Immunogen:	This monoclonal antibody was developed by immunizing mice with a synthetic peptide containing amino acids 481-497 (CINFTRVKNNQPAKYPL) of human TEM8.
Formulation:	PBS containing 0.05% BSA, 0.05% Sodium Azide. Store at 4C short term. Aliquot and store at -20C long term. Avoid freeze-thaw cycles.
Concentration:	lot specific
Purification:	Protein G purified
Conjugation:	Unconjugated
Storage:	Store at -20°C as received.
Stability:	Stable for 12 months from date of receipt.
Gene Name:	anthrax toxin receptor 1
Database Link:	<a href="#">NP_444262</a> <a href="#">Entrez Gene 84168 Human</a> <a href="#">Q9H6X2</a>



[View online »](#)

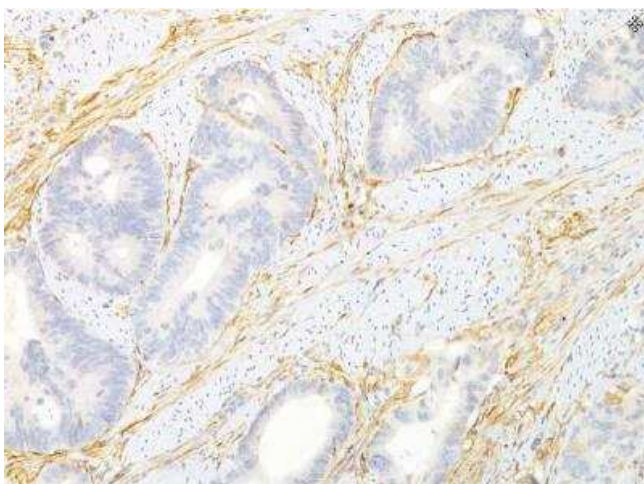
**Background:** Recently, using SAGE (Serial Analysis of Gene Expression) technology, St. Croix et al, have identified 46 genes, whose expression is specifically elevated in tumor-associated endothelium. Nine of these genes were prominently expressed only in tumor endothelial cells (EC), but were absent or barely detectable in normal ECs, and named as Tumor Endothelial Markers (TEMs, TEM 1-9). Based on TEM8s interaction with the C5 domain of collagen  $\alpha 3(\text{VI})$ , a protein also preferentially expressed in tumor endothelium, it is thought that TEM8 plays an important role in tumor angiogenesis.

**Synonyms:** ATR; GAPO; TEM8

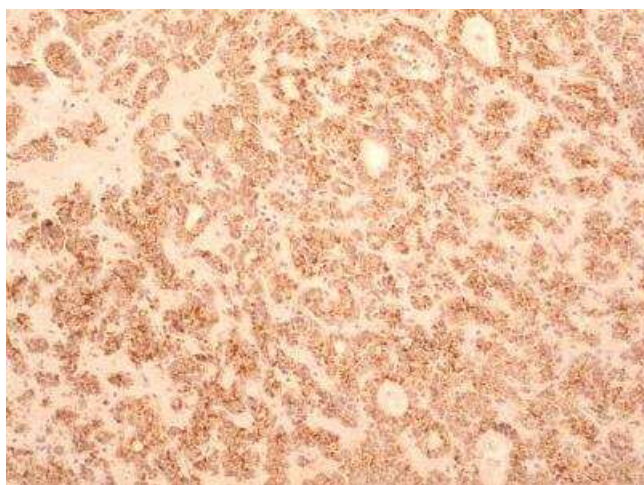
**Note:** Immunohistochemistry-Paraffin: see Hotchkiss et al 2005 for details.  
Immunocytochemistry/Immunofluorescence: See Matsuda (2010) for details.

**Protein Families:** Druggable Genome, Transmembrane

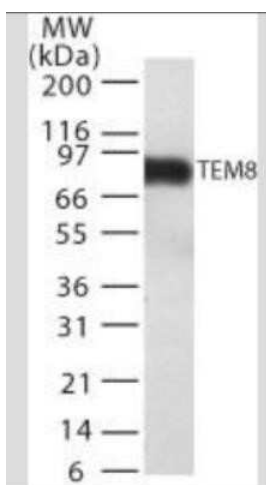
### Product images:



Immunohistochemistry-Paraffin: TEM8/ANTXR1 Antibody (200C1339(SB20)) TA336418 - Human colon stained with TEM8 antibody at 2.5 ug/ml concentration using DAB chromogen detection method (10X magnification)



Immunohistochemistry-Paraffin: TEM8/ANTXR1 Antibody (200C1339(SB20)) TA336418 - Detection of TEM8/ANTXR1 in human liver cancer section using 5 ug/ml concentration of TEM8 antibody. Uniform weak staining was observed in the cancerous cells, while the blood vessels depicted the expected intense positivity for TEM8.



Western Blot: TEM8/ANTXR1 Antibody (200C1339(SB20)) TA336418 - Detection in TEM8 transfected cell lysate using this antibody.



Western Blot: TEM8/ANTXR1 Antibody (200C1339(SB20)) TA336418 - Analysis of human heart lysates (35ug per lane, RIPA buffer) using TEM8 antibody (TA336418) at 0.3ug/ml. Band observed at 65kDa. (Expected MW of 62.8kDa according to NP\_115584.1).