

## Product datasheet for **TA336415**

### TLR4 Rabbit Polyclonal Antibody

#### Product data:

Product Type:	Primary Antibodies
Applications:	FC, ICC/IF, IHC, Immunoblotting, WB
Recommended Dilution:	Immunohistochemistry: 1:50, Immunohistochemistry-Paraffin: 1:50, Western Blot: 1 - 3 ug/mL, Flow Cytometry: 1:10 - 1:1000, Immunocytochemistry/ Immunofluorescence: 1:25 - 1:75, Proximity Ligation Assay, Immunohistochemistry-Frozen, Immunoblotting
Reactivity:	Human, Mouse
Host:	Rabbit
Clonality:	Polyclonal
Immunogen:	A synthetic peptide made to an internal portion of the mouse TLR4 protein (between residues 400-450) [NP_612564]
Formulation:	PBS, 0.02% Sodium Azide. Store at 4C short term. Aliquot and store at -20C long term. Avoid freeze-thaw cycles.
Concentration:	lot specific
Purification:	Immunogen affinity purified
Conjugation:	Unconjugated
Storage:	Store at -20°C as received.
Stability:	Stable for 12 months from date of receipt.
Predicted Protein Size:	75 kDa
Gene Name:	toll like receptor 4
Database Link:	<a href="#">NP_612564</a> <a href="#">Entrez Gene 21898 Mouse</a> <a href="#">Entrez Gene 7099 Human</a> <a href="#">O00206</a>



[View online »](#)

**Background:** Toll like receptor 4 (TLR4) detects lipopolysaccharide of bacteria. This functionality is critical to activate the innate immune system response. HSP70 expression is enhanced when TLR4 expression is increased, resulting in an impact of the heat shock pathway in inflammation caused by infection. TLR4 binds to lipopolysaccharide and potentiates G-protein coupled receptor signaling, which then induces Neu1 expression. Cell surface expression of Neu1 and TLR4 on macrophages is critical in the ligand activation and inflammation mechanisms. Ultimately, TLR4 can be considered as one of the key elements responsible for inflammatory cytokine release and positive feedback in inflammation.

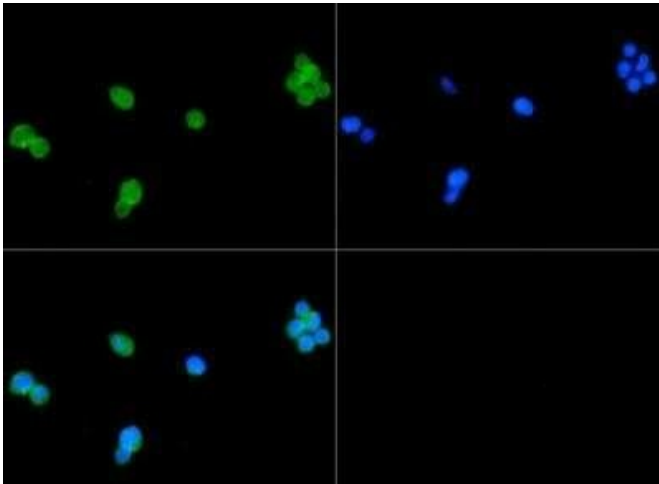
**Synonyms:** ARMD10; CD284; TLR-4; TOLL

**Note:** This TLR4 antibody is useful for Flow Cytometry, Immunocytochemistry/Immunofluorescence, Immunohistochemistry-Frozen, Immunohistochemistry-Paraffin and Western Blot.

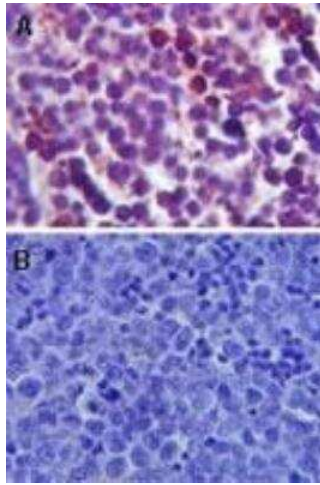
**Protein Families:** Druggable Genome, Transmembrane

**Protein Pathways:** Pathogenic Escherichia coli infection, Toll-like receptor signaling pathway

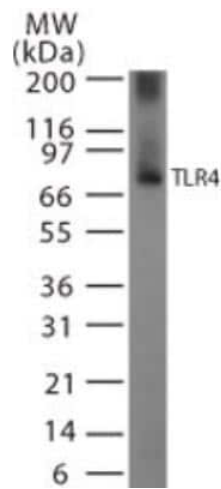
### Product images:



Immunocytochemistry/Immunofluorescence:  
TLR4 Antibody TA336415 - TLR4 antibody was tested in PC-12 cells with FITC (green). Nuclei were counterstained with DAPI (blue).



Immunohistochemistry-Paraffin: TLR4 Antibody TA336415 - Analysis of TLR4 in FFPE mouse spleen tissue using TA336415 (A) and mouse isotype control (B) at 5 mg/mL.



Western Blot: TLR4 Antibody TA336415 - Analysis of TLR4 using TA336415 at 2 ug/mL on partial recombinant mouse TLR4 protein.