

Product datasheet for **TA336408**

Caspase 1 (CASP1) Rabbit Polyclonal Antibody

Product data:

Product Type:	Primary Antibodies
Applications:	IHC, WB
Recommended Dilution:	Western Blot: 0.5-2 ug/ml, Immunohistochemistry: 1:10-1:500, Immunohistochemistry-Paraffin: 1:10-1:500, Knockout Validated
Reactivity:	Human
Host:	Rabbit
Clonality:	Polyclonal
Immunogen:	A synthetic peptide corresponding to amino acids 371-390 RQVRFSEFQPDGRAQMPTTE of human Caspase-1.
Formulation:	PBS containing 0.05% BSA, 0.05% Sodium Azide. Store at 4C short term. Aliquot and store at -20C long term. Avoid freeze-thaw cycles.
Concentration:	lot specific
Purification:	Protein G purified
Conjugation:	Unconjugated
Storage:	Store at -20°C as received.
Stability:	Stable for 12 months from date of receipt.
Gene Name:	caspase 1
Database Link:	NP_150634 Entrez Gene 834 Human P29466

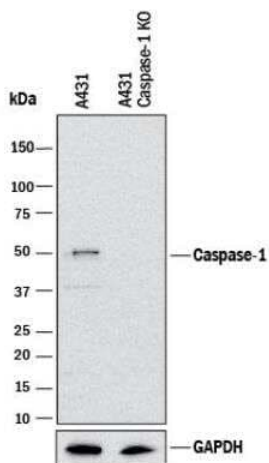
Background: Caspases are a family of cysteine proteases that are key mediators of programmed cell death or apoptosis (1). The precursor form of all caspases is composed of a prodomain, and large and small catalytic subunits. The active forms of caspases are generated by several stimuli including ligand-receptor interactions, growth factor deprivation and inhibitors of cellular functions. All known caspases require cleavage adjacent to aspartates to liberate one large and one small subunit, which associate into a tetramer to form the active enzyme. Caspase-1/ICE (IL-1b converting enzyme) is similar to the cell death gene CED-3 of *Caenorhabditis elegans* and regulates multiple proinflammatory cytokines, including interleukin-1b and interferon-gamma-inducing factor.



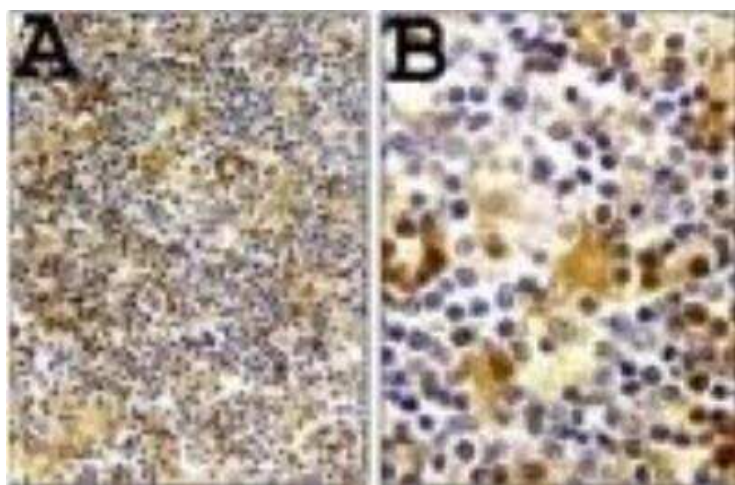
[View online »](#)

Synonyms:	ICE; IL1BC; P45
Note:	The antibody will cross-react with mouse Caspase-1, based on NCBI BLAST.
Protein Families:	Druggable Genome, Protease
Protein Pathways:	Amyotrophic lateral sclerosis (ALS), Cytosolic DNA-sensing pathway, NOD-like receptor signaling pathway

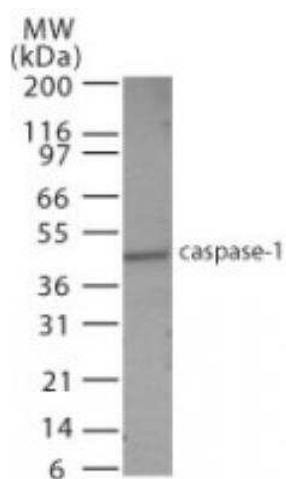
Product images:



Knockout Validated: Caspase-1 Antibody TA336408 - Human epidermoid carcinoma parental cell line and Caspase-1 knockout (KO) A431 cell line. PVDF membrane was probed with 0.5 ug/ml of Mouse Anti-Human Caspase-1 Monoclonal Antibody (Catalog # TA336408) followed by HRP-conjugated Anti-Mouse IgG Secondary Antibody (Catalog # HAF018). Specific band was detected for Caspase-1 at approximately 50 kDa (as indicated) in the parental A431 cell line, but is not detectable in the knockout A431 cell line. This experiment was conducted under reducing conditions.



Immunohistochemistry-Paraffin: Caspase-1 Antibody TA336408 - Human reactive lymph node stained for Caspase-1 expression (TA336408) using a DAB chromogen and Hematoxylin counterstain. B is a higher magnification of A. Staining in macrophages is observed.



Western Blot: Caspase-1 Antibody TA336408 - Analysis of Caspase-1 using a polyclonal antibody. Human HeLa lysate probed with Caspase-1 antibody at 0.5 ug/ml.