

## Product datasheet for **TA336407**

### TLR1 Rabbit Polyclonal Antibody

#### Product data:

Product Type:	Primary Antibodies
Applications:	Dot, FC, IHC, WB
Recommended Dilution:	Flow Cytometry: 2-4 ug/ 1x10 <sup>6</sup> cells, Western Blot: 1-3 ug/ml, Immunohistochemistry-Paraffin: 10 ug/ml, Flow (Cell Surface), Flow (Intracellular): 0.5-1 ug/1 million cells, Immunohistochemistry, Dot Blot
Reactivity:	Human, Mouse, Rat
Host:	Rabbit
Clonality:	Polyclonal
Immunogen:	This antibody was developed against a KLH-conjugated synthetic peptide corresponding to a sequence within amino acids 400-450 of human TLR1.
Formulation:	PBS containing 0.05% BSA, 0.05% Sodium Azide. Store at 4C short term. Aliquot and store at -20C long term. Avoid freeze-thaw cycles.
Concentration:	lot specific
Purification:	Protein G purified
Conjugation:	Unconjugated
Storage:	Store at -20°C as received.
Stability:	Stable for 12 months from date of receipt.
Gene Name:	toll like receptor 1
Database Link:	<a href="#">NP_003254</a> <a href="#">Entrez Gene 21897 Mouse</a> <a href="#">Entrez Gene 305354 Rat</a> <a href="#">Entrez Gene 7096 Human</a> <a href="#">Q15399</a>

**Background:** The Toll-like receptor (TLR) family in mammals are comprised of a family of transmembrane proteins characterized by multiple copies of leucine rich repeats in the extracellular domain and an IL-1 receptor motif in the cytoplasmic domain. The TLRs could constitute an important and unrecognized component of innate immunity in humans. In mice, TLR1 interacts with TLR2 and coexpression of TLR1 and TLR2 enhance the NF-kappaB activation in response to a synthetic lipopeptide. They recognize the lipid configuration of the native mycobacterial lipoprotein as well as several triacylated lipopeptides.



[View online »](#)

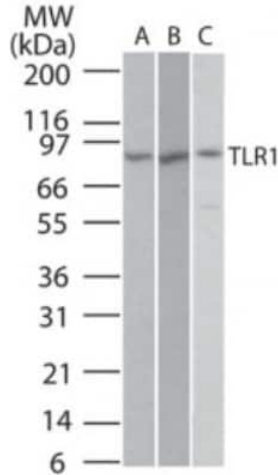
**Synonyms:** CD281; rsc786; TIL; TIL. LPRS5

**Note:** Flow (Cell Surface): 0.5-1 ug/10<sup>6</sup> cells, or see Wong et al, 2007 Flow (Intracellular): 0.5-1 ug/10<sup>6</sup> cells

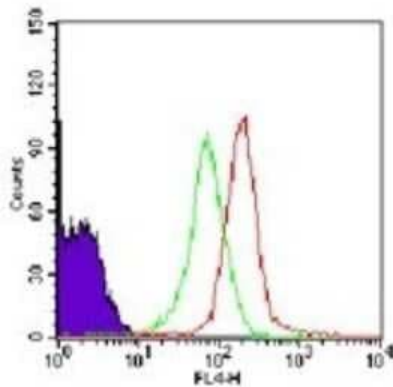
**Protein Families:** Druggable Genome, Transmembrane

**Protein Pathways:** Toll-like receptor signaling pathway

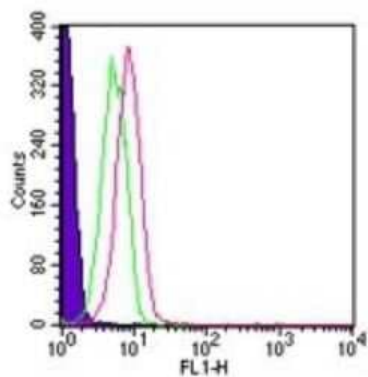
**Product images:**



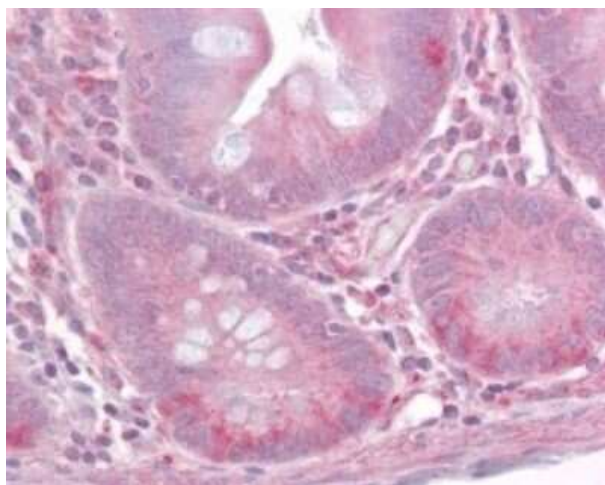
Western Blot: TLR1 Antibody TA336407 - analysis of TLR1 in Ramos (A), Raw (B), and (C) TLR1 transfected cell lysate using this antibody. goat anti-rabbit HRP secondary antibody was used.



Flow Cytometry: TLR1 Antibody TA336407 - Intracellular analysis of TLR1 AF647 in human PBMCs (lymphocyte-gated) using this antibody at 10 ul/10<sup>6</sup> cells. Shaded histogram represents cells without antibody, green represents isotype control, red represents TLR1 antibody.



Flow Cytometry: TLR1 Antibody TA336407 - Analysis using the Alexa Fluor (R) 488 conjugate of TA336407. Staining of TLR1 in human PBMCs (lymphocyte-gated) using this antibody at 10 ul/10<sup>6</sup> cells. Shaded histogram represents cells alone, green represents isotype control was used for this test.



Immunohistochemistry-Paraffin: TLR1 Antibody TA336407 - analysis of human small intestine using this antibody at 10 ug/ml.