

Product datasheet for **TA336404**

Psoriasin (S100A7) Mouse Monoclonal Antibody [Clone ID: 47C1068]

Product data:

Product Type:	Primary Antibodies
Clone Name:	47C1068
Applications:	Electron Microscopy, FC, ICC/IF, IHC, IP, Simple Western, WB
Recommended Dilution:	Immunoprecipitation, Electron Microscopy, Simple Western: 1:500, Flow (Intracellular), Immunohistochemistry-Paraffin, Immunohistochemistry-Frozen, Western Blot: 1-3 ug/ml, Immunohistochemistry, Immunocytochemistry/ Immunofluorescence
Reactivity:	Human
Host:	Mouse
Isotype:	IgG1, kappa
Clonality:	Monoclonal
Immunogen:	This antibody was developed against recombinant psoriasin/HID-5 protein.
Formulation:	PBS containing 0.05% BSA, 0.05% Sodium Azide. Store at 4C short term. Aliquot and store at -20C long term. Avoid freeze-thaw cycles.
Concentration:	lot specific
Purification:	Protein G purified
Conjugation:	Unconjugated
Storage:	Store at -20°C as received.
Stability:	Stable for 12 months from date of receipt.
Gene Name:	S100 calcium binding protein A7
Database Link:	NP_002954 Entrez Gene 6278 Human P31151
Background:	Psoriasin/HID-5 was originally identified as an up-regulated protein in psoriatic keratinocytes (1). Subsequently, this protein was found to have elevated expression in abnormally differentiating primary keratinocytes and in various carcinomas, including ductal carcinoma in situ (2-3). Psoriasin/HID-5 may play a role in the establishment or maintenance of these pathologies, and may serve as a diagnostic marker of particular tumor types or abnormally proliferative epithelia.



[View online »](#)

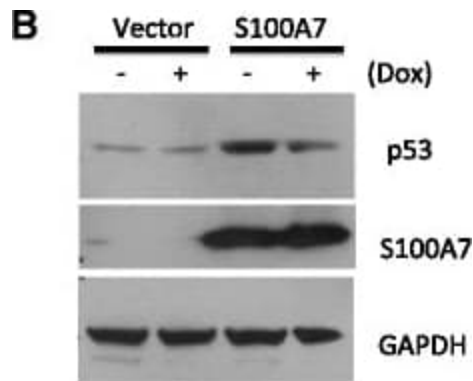
Synonyms: PSOR1; S100A7c

Protein Families: Secreted Protein

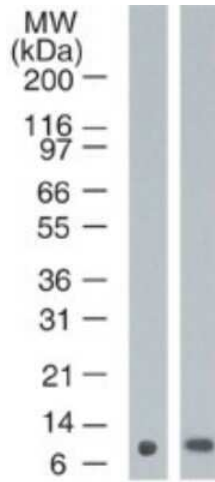
Product images:



Simple Western: S100A7/Psoriasin Antibody (47C1068) TA336404 - Image shows a specific band for S100A7/Psoriasin in 0.5 mg/mL of MCF-7 lysate. This experiment was performed under reducing conditions using the 12-230 kDa separation system.



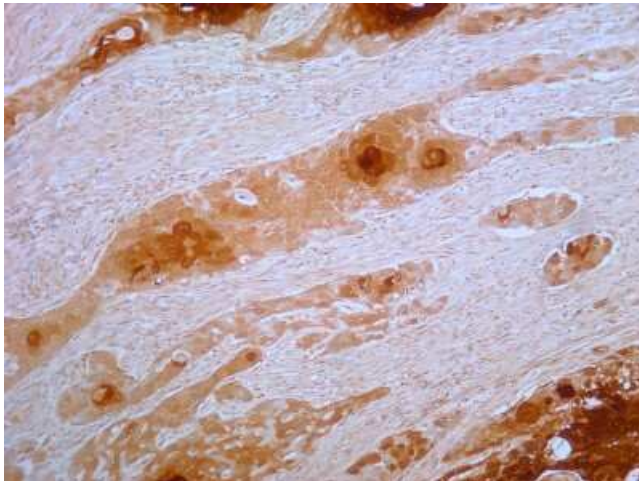
S100A7 activated p53 related anti-proliferative pathways. (A) Log2 fold change of mRNA expression of p53 pathway factors after S100A7 overexpression. (B) WB of p53 and S100A7 in MCF7-p53-CKD transfected with S100A7 or vector control. p53 shRNA transcription and p53 knockdown in MCF7-p53-CKD was induced by Doxycyclin (Dox). (C) S100A7 activated p53, ATR, chk-1, chk-2 in MCF7 cells.



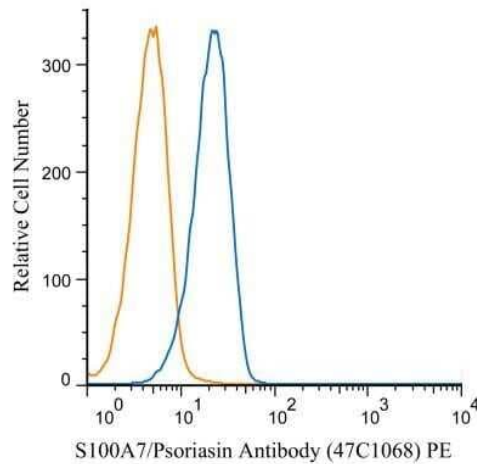
Western Blot: S100A7/Psoriasin Antibody (47C1068) TA336404 - Analysis using Azide Free version of TA336404. Psoriasin in A) MCF10A and B) MCF7 cell lysate using psoriasin antibody at 1 ug/mL.



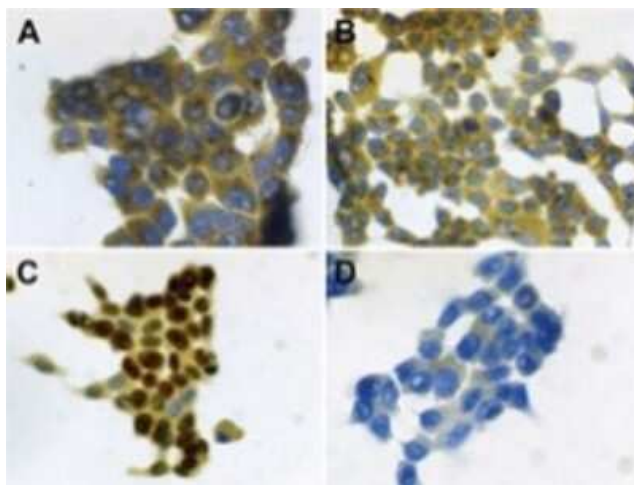
Simple Western: S100A7/Psoriasin Antibody (47C1068) TA336404 - Analysis using Azide Free version of TA336404. Image shows a specific band for Psoriasin/S100A7 in 0.05 mg/mL of MCF-7 lysate. This experiment was performed under reducing conditions using the 12-230 kDa separation system.



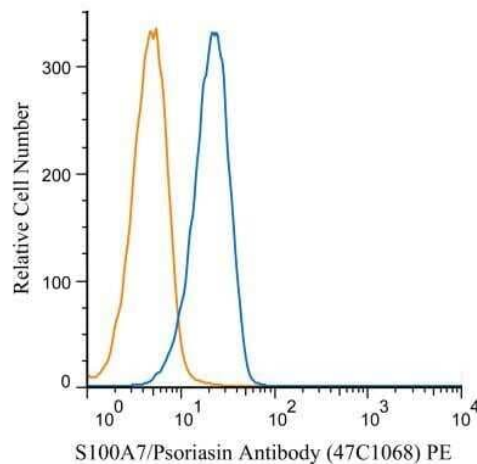
Immunohistochemistry-Paraffin: S100A7/Psoriasin Antibody (47C1068) TA336404 - Tissue section of human esophageal squamous cell carcinoma (SCC) using 5 ug/mL concentration of Psoriasin/S100A7 antibody (clone 47C1068). Diffused to granular cytoplasmic immunostaining was observed all over the tissue section with highest expression levels in the areas with cancer cells especially in the developing squamous keratin pearls.



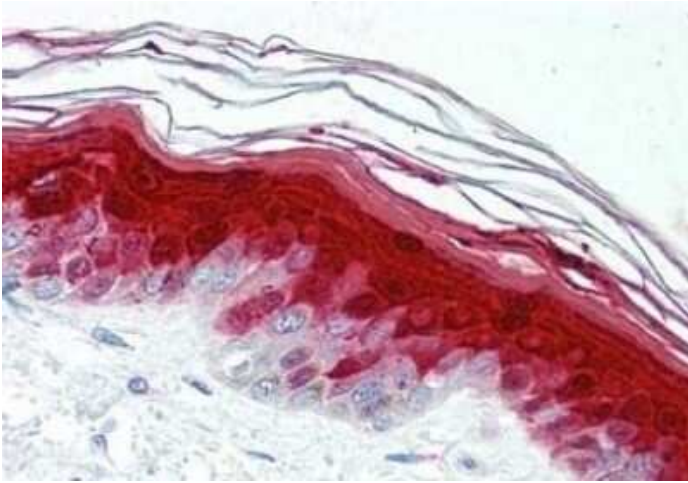
Flow (Intracellular): S100A7/Psoriasin Antibody (47C1068) TA336404 - An intracellular stain was performed on Jurkat cells with S100A7/Psoriasin antibody (47C1068) NBP2-24911PE (blue) and a matched isotype control NBP2-27287PE (orange). Cells were fixed with 4% PFA and then permeablized with 0.1% saponin. Cells were incubated in an antibody dilution of 1 ug/mL for 30 minutes at room temperature. Both antibodies were conjugated to phycoerythrin.



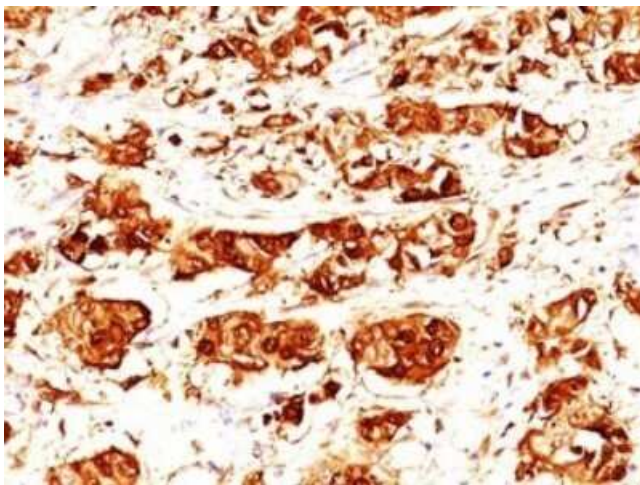
Immunocytochemistry/Immunofluorescence: S100A7/Psoriasin Antibody (47C1068) TA336404 - S100A7/psoriasis detection was performed on (A) untreated and (B) LPS-treated (100 ng/mL, 21 hrs) HOPE-fixed NCI-H727 cells using the monoclonal Psoriasis/HID5/S100A7 antibody (TA336404). (C) Positive control is shown by the expression of the nuclear Ki67 antigen with the MIB-1 (2 ug/mL) antibody. (D) Negative control was included omitting the primary antibody.



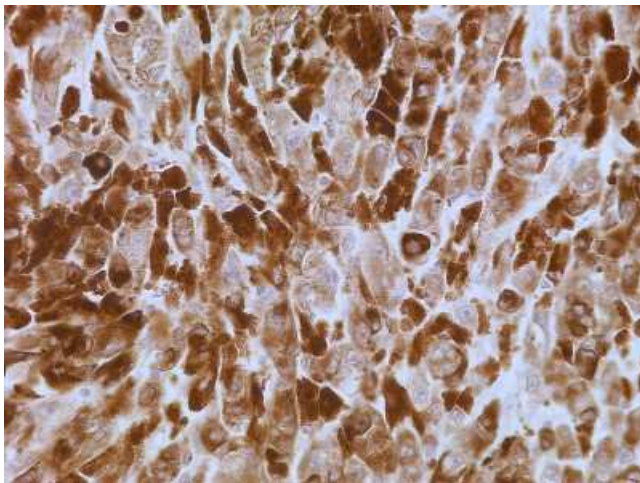
Flow (Intracellular): S100A7/Psoriasin Antibody (47C1068) TA336404 - An intracellular stain was performed on Jurkat cells with S100A7/Psoriasin antibody (47C1068) NBP2-24911PE (blue) and a matched isotype control NBP2-27287PE (orange). Cells were fixed with 4% PFA and then permeablized with 0.1% saponin. Cells were incubated in an antibody dilution of 1 ug/mL for 30 minutes at room temperature. Both antibodies were conjugated to phycoerythrin.. Using the PE format of this antibody.



Immunohistochemistry-Paraffin:
S100A7/Psoriasis Antibody (47C1068) TA336404 -
Staining of human skin. FFPE tissue after heat-
induced antigen retrieval. Antibody concentration
10 ug/mL.



Immunohistochemistry-Paraffin:
S100A7/Psoriasis Antibody (47C1068) TA336404 -
Human breast tissue stained with psoriasis
antibody at 1:200 using peroxidase-conjugate and
DAB chromogen. Antigen retrieval with citrate
buffer, pH 6.



Immunohistochemistry-Paraffin:
S100A7/Psoriasis Antibody (47C1068) TA336404 -
Analysis of FFPE tissue section of human lymph
node cancer using 5 ug/mL concentration of
Psoriasis/S100A7 antibody (clone 47C1068). Very
strong cytoplasmic immunopositivity of
Psoriasis/S100A7 protein was observed in the
cancer cells.