

Product datasheet for **TA336401**

PMS2 Mouse Monoclonal Antibody [Clone ID: 163C1251]

Product data:

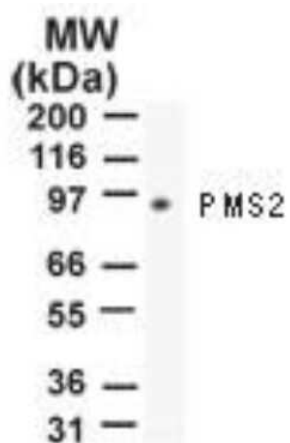
Product Type:	Primary Antibodies
Clone Name:	163C1251
Applications:	CyTOF-ready, FC, WB
Recommended Dilution:	Flow Cytometry: 1ug per 10 ⁶ cells, Western Blot: 1-2 ug/ml, Immunohistochemistry: 2-5ug/ml, Immunohistochemistry-Paraffin: 2-5ug/ml, CyTOF-ready
Reactivity:	Human, Mouse
Host:	Mouse
Isotype:	IgG1
Clonality:	Monoclonal
Immunogen:	This antibody was generated by immunizing mice with a synthetic peptide corresponding to amino acids 623-639 SSLAKRIKQLHHEAQQS of human PMS2; GenBank No. NP_000526.1.
Formulation:	PBS containing 0.05% BSA, 0.05% Sodium Azide. Store at 4C short term. Aliquot and store at -20C long term. Avoid freeze-thaw cycles.
Concentration:	lot specific
Purification:	Protein G purified
Conjugation:	Unconjugated
Storage:	Store at -20°C as received.
Stability:	Stable for 12 months from date of receipt.
Gene Name:	PMS1 homolog 2, mismatch repair system component
Database Link:	NP_000526 Entrez Gene 18861 Mouse Entrez Gene 5395 Human P54278
Background:	PMS1 protein homologue 2 (PMS2) is a DNA mismatch repair protein. Defects in PMS2 are a cause of hereditary non-polyposis cancer (HNPCC). Human PMS2 is an amino acid protein of 862 amino acids.
Synonyms:	HNPCC4; PMS2CL; PMSL2
Protein Families:	Druggable Genome



[View online »](#)

Protein Pathways: Mismatch repair

Product images:



Western Blot: PMS2 Antibody (163C1251)
TA336401 - Analysis of PMS2 using this antibody
at 2 ug/ml against 10 ug of NIH 3T3 cell lysate.