

## Product datasheet for **TA336397**

### IL17E (IL25) Mouse Monoclonal Antibody [Clone ID: 68C1039.2]

#### Product data:

Product Type:	Primary Antibodies
Clone Name:	68C1039.2
Applications:	ICC/IF, IHC, WB
Recommended Dilution:	Immunocytochemistry/ Immunofluorescence, Immunohistochemistry-Paraffin, Western Blot: 1:100 - 1:250, Immunohistochemistry: 1:100 - 1:500
Reactivity:	Human, Mouse
Host:	Mouse
Isotype:	IgG1
Clonality:	Monoclonal
Immunogen:	Amino acids 115-132 of human IL-17E (isoform CRA_a) were used as immunogen for this antibody.
Formulation:	PBS containing 0.05% BSA, 0.05% Sodium Azide. Store at 4C short term. Aliquot and store at -20C long term. Avoid freeze-thaw cycles.
Concentration:	lot specific
Purification:	Protein G purified
Conjugation:	Unconjugated
Storage:	Store at -20°C as received.
Stability:	Stable for 12 months from date of receipt.
Predicted Protein Size:	20 kDa
Gene Name:	interleukin 25
Database Link:	<a href="#">NP_758525</a> <a href="#">Entrez Gene 140806 Mouse</a> <a href="#">Entrez Gene 64806 Human</a> <a href="#">Q9H293</a>



[View online »](#)

**Background:**

A number of cytokines belonging to the interleukin (IL)-17 family have been identified, termed IL-17A-F. IL-17 is a potent proinflammatory cytokine that plays roles in a number of diseases including rheumatoid arthritis, multiple sclerosis, and promotion of tumor growth. IL-17E, C, and B are able to induce proinflammatory responses. However, they do not bind to the IL-17 receptor suggesting that an additional IL-17 related receptor may exist. Receptors for IL-17B and IL-17E have been independently isolated by Shi, et al and Lee, et al. and have been designated as EV127 (in mouse) and IL-17Rh1 (in human), respectively. IL-17E, also called IL-25, induces activation of NF- $\kappa$ B pathway and like IL-17 also induces production of IL-8.

**Synonyms:**

IL17E

**Note:**

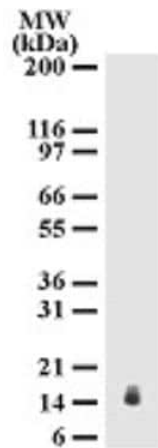
IHC-Paraffin reported in literature (see Terrier B, et al).

**Protein Families:**

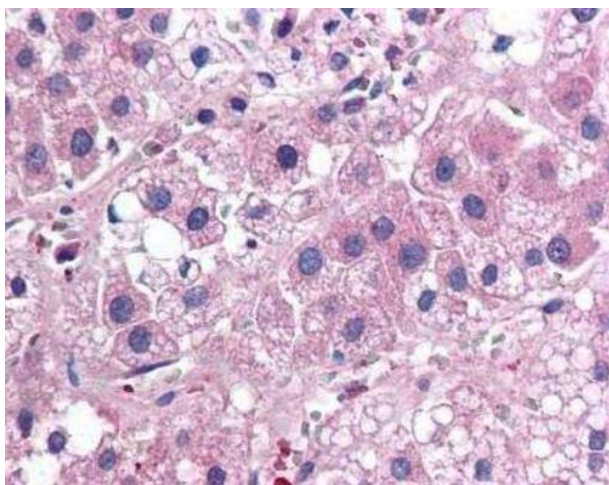
Druggable Genome, Secreted Protein, Transmembrane

**Protein Pathways:**

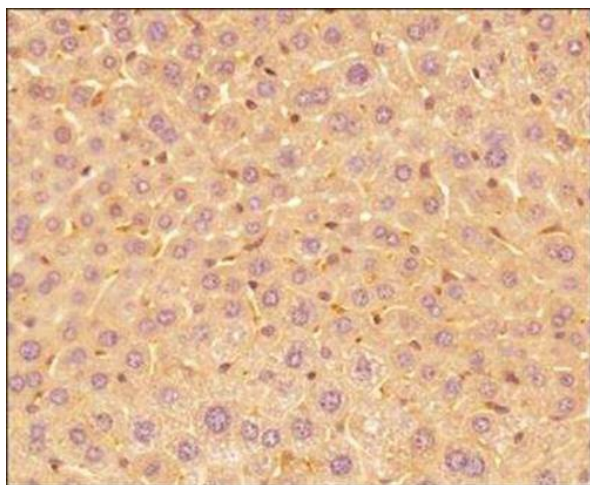
Cytokine-cytokine receptor interaction

**Product images:**

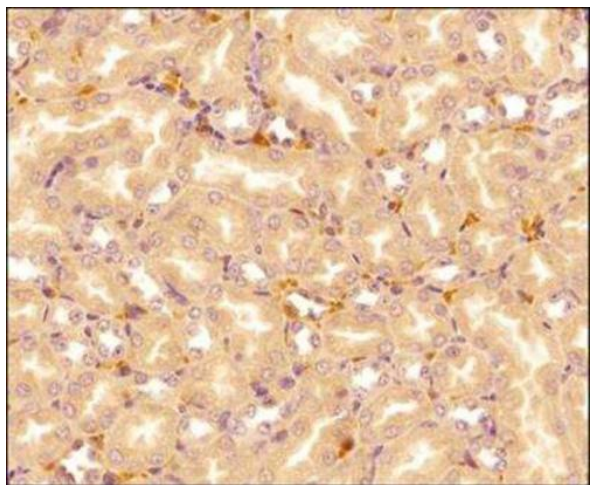
Western Blot: IL-17E/IL-25 Antibody (68C1039.2) TA336397 - Analysis of IL-17E using IL-17E monoclonal antibody. Mouse testis lysate probed with IL-17E antibody at 2  $\mu$ g/mL.



Immunohistochemistry-Paraffin: IL-17E/IL-25 Antibody (68C1039.2) TA336397 - Adrenal cortex, Human



Immunohistochemistry-Paraffin: IL-17E/IL-25 Antibody (68C1039.2) TA336397 - Tissue section of mouse liver using IL17E/IL25 antibody clone 68C1039.2 at 1:150. The antibody generated a diffused cytoplasmic staining in the hepatocytes with a very strong signal in the sinusoidal endothelial cells.



Immunohistochemistry-Paraffin: IL-17E/IL-25 Antibody (68C1039.2) TA336397 - Tissue section of mouse kidney using IL17E/IL25 antibody clone 68C1039.2 at 1:150. The antibody generated a diffused cytoplasmic staining in the tubular and ductal epithelia cells, and a strong positivity in the inter-tubular/ductal blood vessels.