

## Product datasheet for **TA336386**

### CREB1 Mouse Monoclonal Antibody [Clone ID: 82B514.2]

#### Product data:

Product Type:	Primary Antibodies
Clone Name:	82B514.2
Applications:	WB
Recommended Dilution:	WB: 2-4 ug/ml
Reactivity:	Human
Host:	Mouse
Isotype:	IgG1
Clonality:	Monoclonal
Immunogen:	A portion of amino acids 100-150 of human CREB was used as the immunogen.
Formulation:	PBS containing 0.05% BSA, 0.05% Sodium Azide. Store at 4C short term. Aliquot and store at -20C long term. Avoid freeze-thaw cycles.
Concentration:	lot specific
Purification:	Protein G purified
Conjugation:	Unconjugated
Storage:	Store at -20°C as received.
Stability:	Stable for 12 months from date of receipt.
Gene Name:	cAMP responsive element binding protein 1
Database Link:	<a href="#">NP_004370</a> <a href="#">Entrez Gene 1385 Human</a> <a href="#">P16220</a>



[View online »](#)

**Background:**

The transcription factor cAMP response element binding (CREB) binds the palindromic octanucleotide TGACGTCA (8,9). Members of ATF/CREB family include CREB-1, CREB-2 (also designated ATF-4), ATF-1, ATF-2 and ATF-3 (3-7). These proteins share highly conserved leucine zipper dimerization and basic DNA binding domains at the COOH terminal but are highly divergent in their amino terminal domains (5). CREB-1 is phosphorylated at Ser133, a key regulatory site controlling transcriptional activity, by many different kinases including protein kinase A, the calmodulin-dependent protein kinase CaMKII, p44/42 MAP kinase, p90RSK, p38 MAP kinase and MSK1 (2). Phosphorylation allows recruitment of CREB-binding protein (CBP), a large co-activator that contacts the general transcriptional machinery. CREB-mediated transcription regulates diverse cellular responses, including intermediary metabolism, neuronal signaling, cell proliferation, and apoptosis (1).

**Synonyms:**

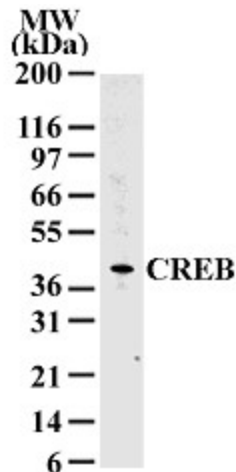
CREB

**Protein Families:**

Druggable Genome, Transcription Factors

**Protein Pathways:**

Antigen processing and presentation, Huntington's disease, Melanogenesis, Prostate cancer

**Product images:**

Western Blot: CREB Antibody (82B514.2)  
TA336386 - Analysis of CREB in HeLa cell lysate  
using this antibody at 2 ug/ml.