

Product datasheet for **TA336378**

IKK beta (IKBKB) Mouse Monoclonal Antibody [Clone ID: 10A9B6]

Product data:

Product Type:	Primary Antibodies
Clone Name:	10A9B6
Applications:	FC, ICC/IF, IHC, IP, WB
Recommended Dilution:	Immunocytochemistry/ Immunofluorescence, Gel Super Shift Assays, Immunohistochemistry-Frozen, Immunoprecipitation: 2 - 5 ug / 10 ⁶ cells, Western Blot: 2 - 5 ug/mL, Flow Cytometry: 1:10 - 1:1000, Immunohistochemistry
Reactivity:	Human, Mouse
Host:	Mouse
Isotype:	IgG1, kappa
Clonality:	Monoclonal
Immunogen:	Full-length human IKKb/IKK2 recombinant protein was used as immunogen (NP_001547).
Formulation:	PBS containing 0.05% BSA, 0.05% Sodium Azide. Store at 4C short term. Aliquot and store at -20C long term. Avoid freeze-thaw cycles.
Concentration:	lot specific
Purification:	Protein G purified
Conjugation:	Unconjugated
Storage:	Store at -20°C as received.
Stability:	Stable for 12 months from date of receipt.
Gene Name:	inhibitor of kappa light polypeptide gene enhancer in B-cells, kinase beta
Database Link:	NP_001547 Entrez Gene 16150 Mouse Entrez Gene 3551 Human O14920



[View online »](#)

Background:

NF- κ B (nuclear factor κ B) is sequestered in the cytoplasm by I κ B family of inhibitory proteins that mask the nuclear localization signal of NF- κ B thereby preventing translocation of NF- κ B to the nucleus. External stimuli such as tumor necrosis factor or other cytokines results in phosphorylation and degradation of I κ B releasing NF- κ B dimers. NF- κ B dimer subsequently translocates to the nucleus and activates target genes. Synthesis of I κ Ba is autoregulated. I κ B proteins are phosphorylated by I κ B kinase complex consisting of at least three proteins, IKK1/a, IKK2/b, and IKK3/g. IKK1/a and IKK2/b are phosphorylated by NF- κ B-inducing kinase (NIK) and MAP kinase kinase kinase-1 (MEKK1), respectively. Recent studies have shown that IKK2/b, not IKK1/a, is the target proinflammatory stimuli. Targeted disruption of IKK2/b gene in mice also results in extensive liver damage from apoptosis and death as embryo.

Synonyms:

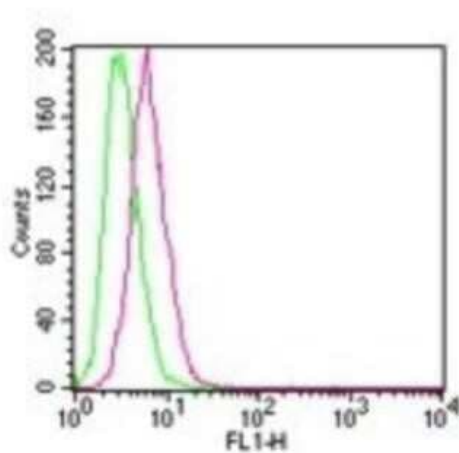
IKK-beta; IKK2; IKKB; IMD15; NFKB1B

Protein Families:

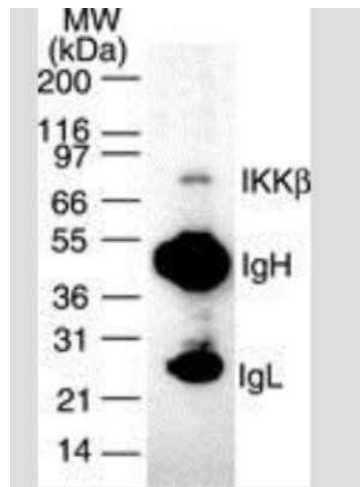
Druggable Genome, Protein Kinase, Transcription Factors

Protein Pathways:

Acute myeloid leukemia, Adipocytokine signaling pathway, Apoptosis, B cell receptor signaling pathway, Chemokine signaling pathway, Chronic myeloid leukemia, Cytosolic DNA-sensing pathway, Epithelial cell signaling in Helicobacter pylori infection, Insulin signaling pathway, MAPK signaling pathway, Neurotrophin signaling pathway, NOD-like receptor signaling pathway, Pancreatic cancer, Pathways in cancer, Prostate cancer, RIG-I-like receptor signaling pathway, Small cell lung cancer, T cell receptor signaling pathway, Toll-like receptor signaling pathway, Type II diabetes mellitus

Product images:

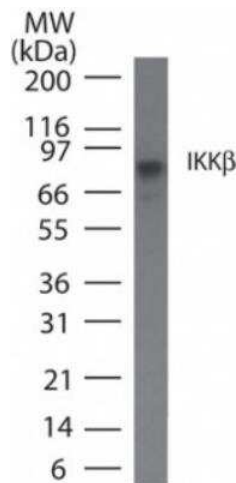
Flow (Intracellular): IKK beta Antibody (10A9B6) TA336378 - Analysis using the Alexa Fluor (R) 488 conjugate. Staining of IKK in HEK 293 cells using 0.1 μ g of this antibody. Green histogram represents the isotype control, red represents the IKK antibody. Image using the Azide Free format of this antibody.



Immunoprecipitation: IKK beta Antibody (10A9B6) TA336378 - Antibody was used to immunoprecipitate IKKb from 1×10^6 Daudi cells and the immuno-precipitated protein was detected by western blotting using NB100-56509. IKKb was detected as a protein of ~87 kD. Image using the Azide Free format of this antibody.



Simple Western: IKK beta Antibody (10A9B6) TA336378 - Analysis using Azide Free version of TA336378. Lane view shows a specific band for IKK beta in 1.0 mg/ml of HeLa lysate. This experiment was performed under reducing conditions using the 12-230 kDa separation system. *Non-specific interaction with the



Western Blot: IKK beta Antibody (10A9B6) TA336378 - IKK beta in Daudi cell lysate using IKK beta antibody at 5 ug/ml.