

Product datasheet for **TA336374**

IKK beta (IKBKB) Mouse Monoclonal Antibody [Clone ID: 10AG2]

Product data:

Product Type:	Primary Antibodies
Clone Name:	10AG2
Applications:	CyTOF-ready, FC, ICC/IF, IHC, Immunoblotting, IP, Simple Western, WB
Recommended Dilution:	Immunoprecipitation: 1:10 - 1:500, Simple Western: 1:12.5, Immunohistochemistry-Paraffin: 1:10 - 1:500, Immunocytochemistry/ Immunofluorescence: 2-5 ug/ml, Immunohistochemistry: 1:10 - 1:500, Immunoblotting, CyTOF-ready, Flow Cytometry: 0.25 - 0.5 ug/ 10 ⁶ cells, Western Blot: 2 - 4 ug/ml
Reactivity:	Human, Mouse
Host:	Mouse
Isotype:	IgG1
Clonality:	Monoclonal
Immunogen:	A full-length human IKKb recombinant protein was used to immunize mice (NP_001547).
Formulation:	PBS containing 0.05% BSA, 0.05% Sodium Azide. Store at -20C. Avoid freeze-thaw cycles.
Concentration:	lot specific
Purification:	Protein G purified
Conjugation:	Unconjugated
Storage:	Store at -20°C as received.
Stability:	Stable for 12 months from date of receipt.
Predicted Protein Size:	86.564 kDa
Gene Name:	inhibitor of kappa light polypeptide gene enhancer in B-cells, kinase beta
Database Link:	NP_001547 Entrez Gene 16150 Mouse Entrez Gene 3551 Human O14920



[View online »](#)

Background:

NF- κ B (nuclear factor κ B) is sequestered in the cytoplasm by I κ B family of inhibitory proteins that mask the nuclear localization signal of NF- κ B thereby preventing translocation of NF- κ B to the nucleus. External stimuli such as tumor necrosis factor or other cytokines results in phosphorylation and degradation of I κ B releasing NF- κ B dimers. NF- κ B dimer subsequently translocates to the nucleus and activates target genes. Synthesis of I κ B α is autoregulated. I κ B proteins are phosphorylated by I κ B kinase complex consisting of at least three proteins, IKK1/a, IKK2/b, and IKK3/g. IKK1/a and IKK2/b are phosphorylated by NF- κ B-inducing kinase (NIK) and MAP kinase kinase kinase-1 (MEKK1), respectively. Recent studies have shown that IKK2/b, not IKK1/a, is the target proinflammatory stimuli. Targeted disruption of IKK2/b gene in mice also results in extensive liver damage from apoptosis and death as embryo.

Synonyms:

IKK-beta; IKK2; IKKB; IMD15; NFKB1KB

Note:

Useful in Immunohistochemistry-Paraffin See Page et al.

Protein Families:

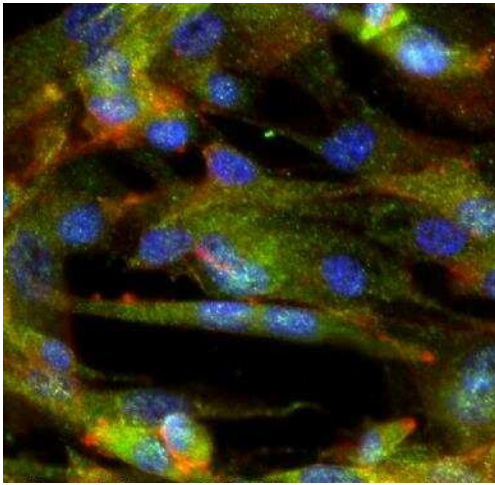
Druggable Genome, Protein Kinase, Transcription Factors

Protein Pathways:

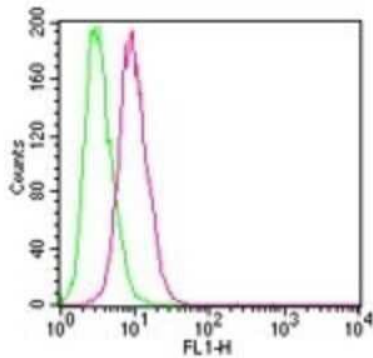
Acute myeloid leukemia, Adipocytokine signaling pathway, Apoptosis, B cell receptor signaling pathway, Chemokine signaling pathway, Chronic myeloid leukemia, Cytosolic DNA-sensing pathway, Epithelial cell signaling in Helicobacter pylori infection, Insulin signaling pathway, MAPK signaling pathway, Neurotrophin signaling pathway, NOD-like receptor signaling pathway, Pancreatic cancer, Pathways in cancer, Prostate cancer, RIG-I-like receptor signaling pathway, Small cell lung cancer, T cell receptor signaling pathway, Toll-like receptor signaling pathway, Type II diabetes mellitus

Product images:

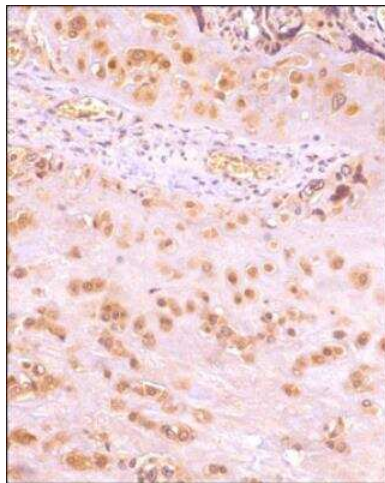
Simple Western: IKK beta Antibody (10AG2) TA336374 - Lane view shows a specific band for IKK beta in 1.0 mg/ml of HeLa lysate. This experiment was performed under reducing conditions using the 12-230 kDa separation system.



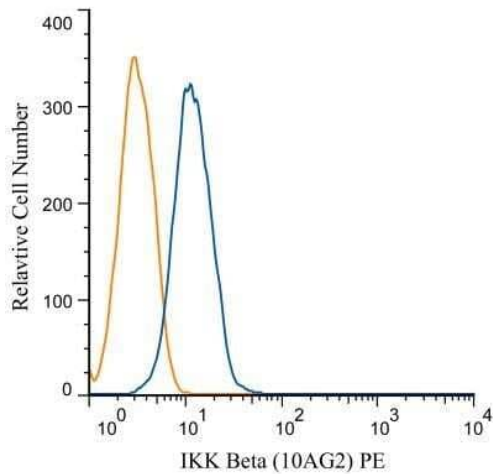
Immunocytochemistry/Immunofluorescence: IKK beta Antibody (10AG2) TA336374 - U-87 cells were fixed for 10 minutes using 10% formalin and then permeabilized for 5 minutes using 1X PBS + 0.5% Triton-X100. The cells were incubated with anti-IKK beta Antibody (10AG2) at 2 ug/ml overnight at 4C and detected with an anti-mouse Dylight 488 (Green) at a 1:500 dilution. Actin was detected with Phalloidin 568 (Red) at a 1:500 dilution. Nuclei were counterstained with DAPI (Blue). Cells were imaged using a 40X objective.



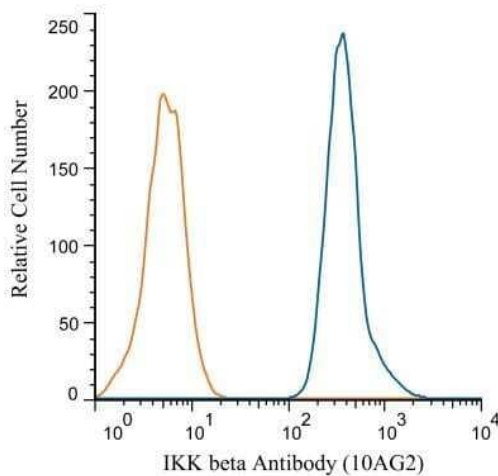
Flow Cytometry: IKK beta Antibody (10AG2) TA336374 - Analysis using the Alexa Fluor (R) 488 conjugate of TA336374. Staining of IKKbeta in HEK 293 cells using 0.1 ug of Alexa Fluor 488-conjugated antibody. Green histogram represents the isotype control , red represents the IKKbeta antibody.



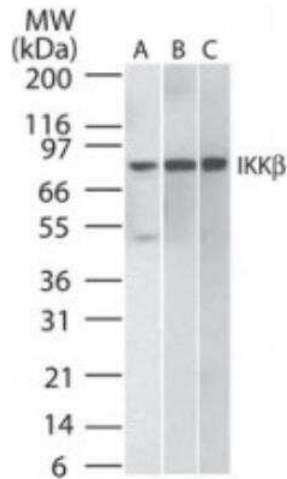
Immunohistochemistry-Paraffin: IKK beta Antibody (10AG2) TA336374 - Analysis of a FFPE tissue section of human placenta using 1:200 dilution of IKK beta clone 10AG2 antibody. The staining was developed using HRP labeled anti-rabbit secondary antibody and DAB reagent, and nuclei of cells were counter-stained with hematoxylin.



Flow Cytometry: IKK beta Antibody (10AG2) TA336374 - Analysis of PE conjugate of TA336374. An intracellular stain was performed on Jurkat cells with IKK Beta antibody (10AG2) TA336374PE (blue) and a matched isotype control NBP2-27287AF488 (orange). Cells were fixed with 4% PFA and then permeablized wi



Flow Cytometry: IKK beta Antibody (10AG2) TA336374 - Analysis using Alexa Fluor (R) 647 conjugate of TA336374. An intracellular stain was performed on HeLa cells with IKK beta antibody (10AG2) TA336374 (blue) and a matched isotype control NBP2-27287 (orange). Cells were fixed with 4% PFA and then permeablized with 0.1% saponin. 1 ug of antibody was added to 100 uL of staining buffer and cells were incubated for 30 minutes at room temperature. Both antibodies were conjugated to Alexa Fluor 647.



Western Blot: IKK beta Antibody (10AG2) TA336374 - Analysis of A) human Daudi, B) HeLa, and C) mouse NIH3T3 lysate probed with IKKbeta antibody at 2 ug/ml.