

Product datasheet for **TA336369**

Cytochrome C (CYCS) Mouse Monoclonal Antibody [Clone ID: 7H8.2C12]

Product data:

Product Type:	Primary Antibodies
Clone Name:	7H8.2C12
Applications:	FC, ICC/IF, IHC, Immunoblotting, WB
Recommended Dilution:	Western Blot: 0.05-0.5 ug/ml, Immunocytochemistry/ Immunofluorescence: 1:10-1:500, Simple Western: 2.5 ug/ml, Immunohistochemistry-Paraffin: 1:10-1:500, Flow Cytometry: 1:20-1:2000, Immunohistochemistry: 1:10-1:500, Flow (Intracellular), Flow (Cell Surface), Immunoblotting
Reactivity:	Human, Mouse, Canine, Drosophila, Equine, Mammalian
Host:	Mouse
Isotype:	IgG2b, kappa
Clonality:	Monoclonal
Immunogen:	Synthetic peptides corresponding to amino acids 1-80, 81-104 and 66-104 of pigeon CYT were used as the immunogen (Jemmerson et al. 1991). The antibody recognizes an epitope within amino acids 93-104 of pigeon cytochrome C based on competitive ELISA result
Formulation:	PBS containing 0.05% BSA, 0.05% Sodium Azide. Store at 4C short term. Aliquot and store at -20C long term. Avoid freeze-thaw cycles.
Concentration:	lot specific
Purification:	Protein G purified
Conjugation:	Unconjugated
Storage:	Store at -20°C as received.
Stability:	Stable for 12 months from date of receipt.
Gene Name:	cytochrome c, somatic
Database Link:	NP_061820 Entrez Gene 13063 Mouse Entrez Gene 54205 Human P99999



[View online »](#)

Background: In addition to its well-known role in electron transport, cytochrome c (CYT) has been identified as a mediator of apoptosis or programmed cell death. Cytochrome c translocates from mitochondria into the cytoplasm in the early phases of apoptosis and plays a role in initiation of the apoptotic proteolytic cascade by activating caspase-3. Cytochrome c has been shown to bind Apaf-1. Apaf-1 has also been shown to activate caspase-3.

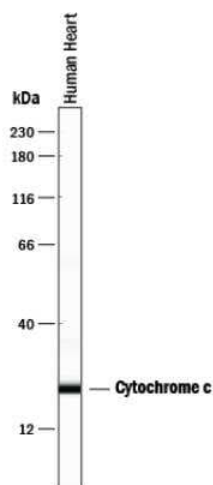
Synonyms: CYC; HCS; THC4

Note: Useful in Flow Cytometry (Intracellular): See Mohr (2004) et al.
Immunocytochemistry/Immunofluorescence: See Yamasaki (2006) et al.
Immunohistochemistry-Paraffin: See Fujimara (1998). et al.

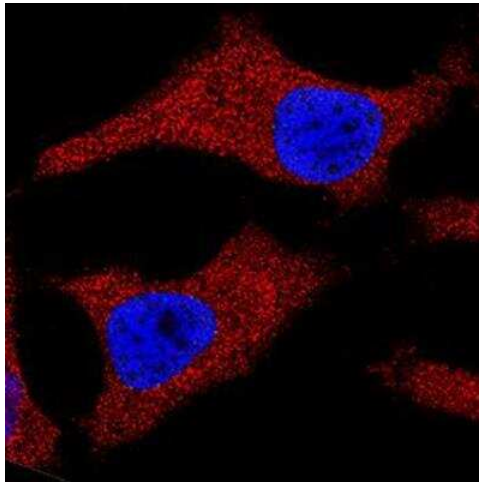
Protein Families: Druggable Genome

Protein Pathways: Alzheimer's disease, Amyotrophic lateral sclerosis (ALS), Apoptosis, Colorectal cancer, Huntington's disease, p53 signaling pathway, Parkinson's disease, Pathways in cancer, Small cell lung cancer, Viral myocarditis

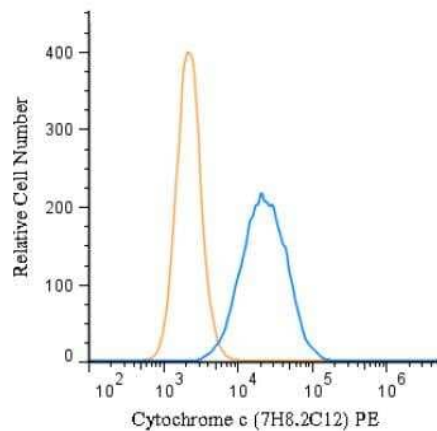
Product images:



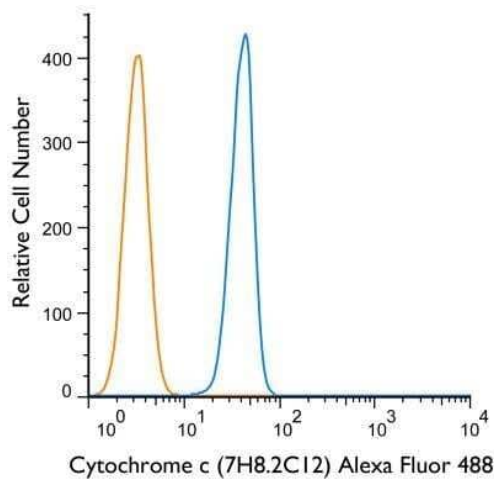
Simple Western: Cytochrome c Antibody (7H8.2C12) TA336369 - Lane view shows lysates of human heart tissue, loaded at 0.2 mg/mL. A specific band was detected for Cytochrome c at approximately 23 kDa (as indicated) using 2.5 ug/mL of Mouse Anti-Cytochrome c Monoclonal Antibody (Catalog # TA336369). This experiment was conducted under reducing conditions and using the 12-230 kDa separation system.



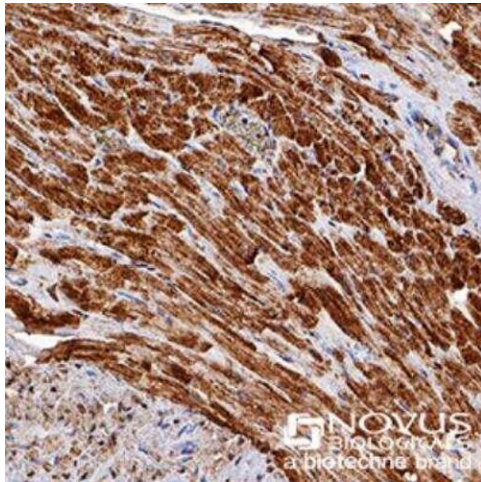
Immunocytochemistry/Immunofluorescence: Cytochrome c Antibody (7H8.2C12) TA336369 - p73 was detected in immersion fixed HeLa human cell line using TA336369 at 25 ug/ml for 3 hours at room temperature. Cells were stained using the NorthernLights(TM) 557-conjugated Anti-Mouse IgG Secondary Antibody (red; Catalog # NL007) and counterstained with DAPI (blue). Staining was observed in the cytoplasm and mitochondria.



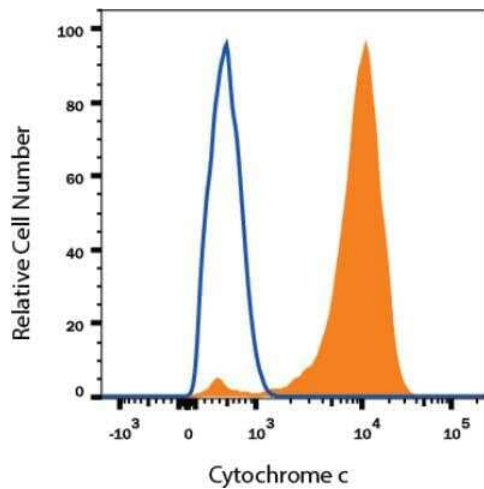
Flow (Intracellular): Cytochrome c Antibody (7H8.2C12) TA336369 - An intracellular stain was performed on HeLa cells with Cytochrome c (7H8.2C12) antibody TA336369PE (blue) and a matched isotype control (orange). Cells were fixed with 4% PFA and then permeabilized with 0.1% saponin. Cells were incubated in an antibody dilution of 5 ug/mL for 30 minutes at room temperature. Both antibodies were conjugated to phycoerythrin.



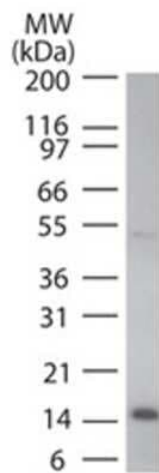
Flow Cytometry: Cytochrome c Antibody (7H8.2C12) TA336369 - Using the Alexa Fluor 488 direct conjugate, an intracellular stain was performed on HeLa cells with Cytochrome c (7H8.2C12) antibody TA336369AF488 (blue) and a matched isotype control NBP2-27231AF488 (orange). Cells were fixed with 4% PFA and then permeabilized with 0.1% saponin. Cells were incubated in an antibody dilution of 10 ug/mL for 30 minutes at room temperature. Both antibodies were conjugated to Alexa Fluor 488.



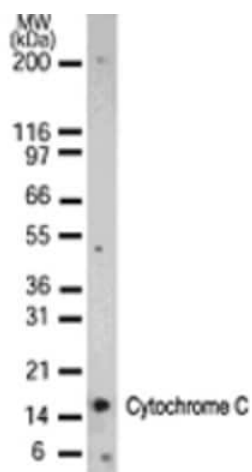
Immunohistochemistry-Paraffin: Cytochrome c Antibody (7H8.2C12) TA336369 - Cytochrome C was detected in immersion fixed paraffin-embedded sections of human heart using anti-human mouse monoclonal antibody (Catalog # TA336369) at 1:200 dilution overnight at 4C. Tissue was stained using the VisuCyte anti-mouse HRP polymer detection reagent (Catalog # VC001) with DAB chromogen (brown) and counterstained with hematoxylin (blue). Images may not be copied, printed or otherwise disseminated without express written permission of Novus Biologicals a bio-techne brand.



Flow Cytometry: Cytochrome c Antibody (7H8.2C12) TA336369 - Detection of Cytochrome C in Human HeLa Cell Line by Flow Cytometry. Human HeLa cell line was stained with Mouse Anti- Cytochrome C Monoclonal Antibody (Catalog # TA336369, filled histogram), or Mouse IgG2B isotype control (Catalog # MAB0041, open histogram) followed by APC-conjugated Anti-Mouse IgG Secondary Antibody (Catalog # F0101B). To facilitate intracellular staining, cells were fixed with Flow Cytometry Fixation Buffer (Catalog # FC004) and permeabilized with Flow Cytometry Permeabilization/Wash Buffer I (Catalog # FC005). Images may not be copied, printed or otherwise disseminated without express written permission of Novus Biologicals a bio-techne brand.



Western Blot: Cytochrome c Antibody (7H8.2C12) TA336369 - Human HeLa lysate probed with Cytochrome C antibody at 0.1 ug/ml.



Western Blot: Cytochrome c Antibody (7H8.2C12) TA336369 - Analysis using the biotin conjugate of TA336369. Detection of Cytochrome C in 15 ug of HeLa cell lysate using NB100-55775 at 1:1000. A 15 kDa band is detected.