

Product datasheet for **TA336366**

Corticotropin Releasing Factor Receptor 2 (CRHR2) Rabbit Polyclonal Antibody

Product data:

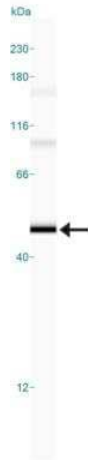
Product Type:	Primary Antibodies
Applications:	ICC/IF, Simple Western, WB
Recommended Dilution:	Immunocytochemistry/ Immunofluorescence, Simple Western: 1:200, Western Blot: 0.5-2 ug/ml
Reactivity:	Human, Mouse, Rat, Bovine, Canine, Chicken
Host:	Rabbit
Clonality:	Polyclonal
Immunogen:	A portion of amino acids 75-125 of human CRHR2 was used as the immunogen.
Formulation:	PBS containing 0.05% BSA, 0.05% Sodium Azide. Store at 4C short term. Aliquot and store at -20C long term. Avoid freeze-thaw cycles.
Concentration:	lot specific
Purification:	Protein G purified
Conjugation:	Unconjugated
Storage:	Store at -20°C as received.
Stability:	Stable for 12 months from date of receipt.
Gene Name:	corticotropin releasing hormone receptor 2
Database Link:	NP_001874 Entrez Gene 12922 Mouse Entrez Gene 64680 Rat Entrez Gene 1395 Human Q13324
Background:	CRHR2 is a novel member of Secretin-family-GPCR proteins that functions as a functional receptor for CRF. It is expressed as 3 isoforms; alpha, beta and gamma. These isoforms primarily differ in their N-terminal sequence and tissue distribution. Apart from CRF, other ligands of CRHR2 include UcnI, UcnII and UcnIII. CRHR2 is involved in stress responses, cardiovascular function and gastric motility. Studies on CRHR2 deficient mice suggested a central anxiolytic effect of CRHR2. Northern Blot analysis detects CRHR2 expression in brain, hypothalamus, heart, GI, lung, skeletal muscle and vasculature.
Synonyms:	CRF-RB; CRF2; CRFR2; HM-CRF
Protein Families:	Druggable Genome, Transmembrane



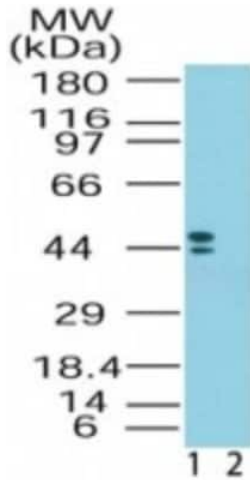
[View online »](#)

Protein Pathways: Neuroactive ligand-receptor interaction

Product images:



Simple Western: CRHR2/CRF2 Antibody TA336366 - Shows a specific band for Corticotropin Releasing Factor 2 in 0.5 mg/ml of Human Brain lysate. This experiment was performed under reducing conditions using the 12-230 kDa separation system.



Western Blot: CRHR2/CRF2 Antibody TA336366 - Analysis of CRHR2 in human brain lysate in the 1) absence and 2) presence of immunizing peptide using this antibody. Both of the isoforms detected by this antibody.