

## Product datasheet for **TA336365**

### FPR1 Rabbit Polyclonal Antibody

#### Product data:

Product Type:	Primary Antibodies
Applications:	WB
Recommended Dilution:	Western Blot, Simple Western: 100 ug/ml
Reactivity:	Human, Primate
Host:	Rabbit
Clonality:	Polyclonal
Immunogen:	A synthetic peptide corresponding to amino acids 176-190 of human FPR1 (CTFNFSPWTNDPKER) was used as the immunogen
Formulation:	PBS, 0.02% Sodium Azide. Store at 4C short term. Aliquot and store at -20C long term. Avoid freeze-thaw cycles.
Concentration:	lot specific
Purification:	Immunogen affinity purified
Conjugation:	Unconjugated
Storage:	Store at -20°C as received.
Stability:	Stable for 12 months from date of receipt.
Gene Name:	formyl peptide receptor 1
Database Link:	<a href="#">NP_002020</a> <a href="#">Entrez Gene 2357 Human P21462</a>
Background:	FPR1 is a member of chemoattractant/chemokine GPCRs expressed mainly on leukocytes, neutrophils and monocytes. FPR1 is a seven transmembrane pertussis toxin-sensitive GPCR and binds to formylated peptides generated by bacteria resulting in leukocyte trafficking to the site of inflammation. Ligand binding to FPR results in activation of multiple effectors including phospholipase C leading to calcium mobilization and PKC activation. Other implications of FPR signaling include polarization of actin cytoskeleton, activation of various integrins, increased cell migration, phagocytosis, degranulation and release of reactive oxygen intermediates.
Synonyms:	FMLP; FPR

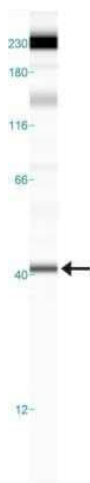


[View online »](#)

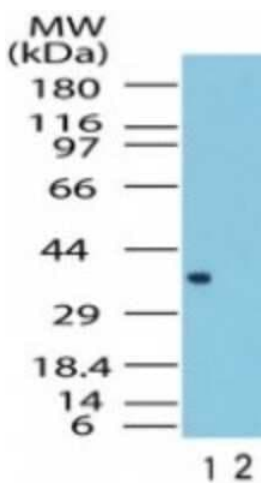
**Protein Families:** Druggable Genome, GPCR, Transmembrane

**Protein Pathways:** Neuroactive ligand-receptor interaction

**Product images:**



Simple Western: FPR1 Antibody TA336365 - Shows a specific band for FPR1 in 0.5 mg/ml of Mouse Liver lysate. This experiment was performed under reducing conditions using the 12-230 kDa separation system. \*Non-specific interaction with the 230 kDa standard may be seen with this antibody.



Western Blot: FPR1 Antibody TA336365 - Analysis of FPR1 in the 1) absence and 2) presence of immunizing peptide in human liver lysate using this antibody at 1 ug/ml.