

Product datasheet for **TA336362**

CYLD Rabbit Polyclonal Antibody

Product data:

Product Type:	Primary Antibodies
Applications:	ICC/IF, Simple Western, WB
Recommended Dilution:	Immunocytochemistry/ Immunofluorescence: 5-10 ug/ml, Western Blot: 2-4 ug/ml, Simple Western: 1:50
Reactivity:	Human
Host:	Rabbit
Clonality:	Polyclonal
Immunogen:	A synthetic peptide (DKQTQKLLKVPKGS) corresponding to amino acids 32-45 of human CYLD was used as immunogen (NP_001035877).
Formulation:	PBS containing 0.05% BSA, 0.05% Sodium Azide. Store at 4C short term. Aliquot and store at -20C long term. Avoid freeze-thaw cycles.
Concentration:	lot specific
Purification:	Protein G purified
Conjugation:	Unconjugated
Storage:	Store at -20°C as received.
Stability:	Stable for 12 months from date of receipt.
Gene Name:	CYLD lysine 63 deubiquitinase
Database Link:	NP_001035814 Entrez Gene 1540 Human Q9NQC7



[View online »](#)

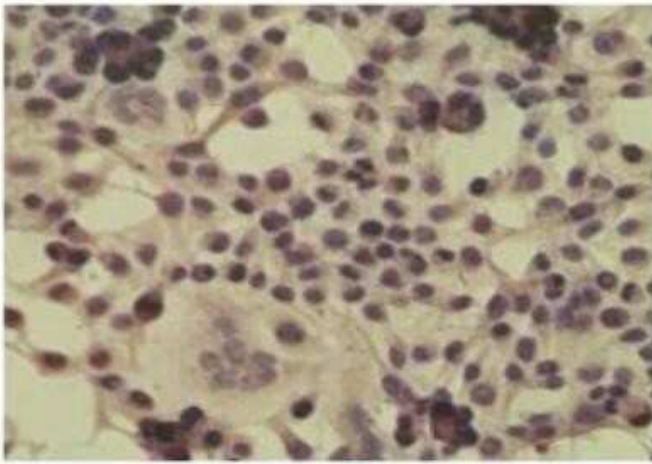
Background: CYLD is a 956 aa, cytoplasmic, deubiquitinating enzyme belonging to the ubiquitin carboxy-terminal hydrolases (UCH) family of proteins with three cytoskeletal-associated protein-glycine-conserved (CAP-GLY) domains, a proline rich region, a SH3 binding domain and a sequence homology to catalytic domain of UCH. CYLD is identified as a tumor suppressor protein affecting the JNK signaling pathway. CYLD is a negative regulator of TRAF2 and NF-kappa-B signaling pathway and is also known to have receptor-dependent role in regulating the I-kappa-B kinase pathway. It also has a deubiquitinating activity that is directed towards non-Lys-48-linked polyubiquitin chains and TRAP1 is a novel substrate for deubiquitination. Mutated CYLD is known to be associated with cylindromatosis, multiple familial trichoepithelioma, and Brooke-Spiegler syndrome.

Synonyms: BRSS; CDMT; CYLD1; CYLDI; EAC; MFT; MFT1; SBS; TEM; USPL2

Protein Families: Druggable Genome

Protein Pathways: RIG-I-like receptor signaling pathway

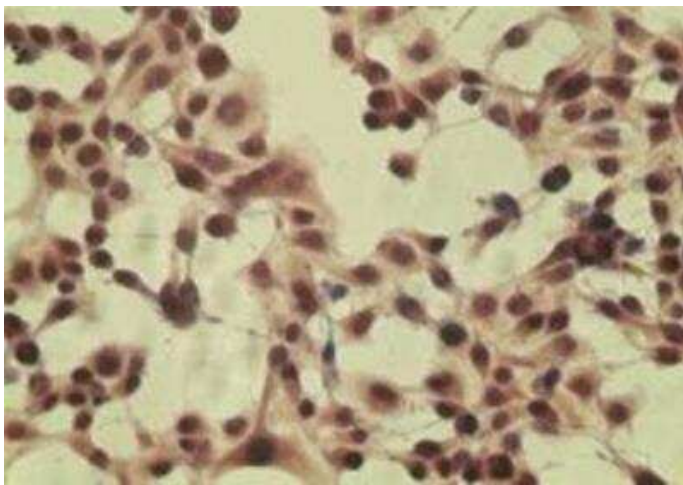
Product images:



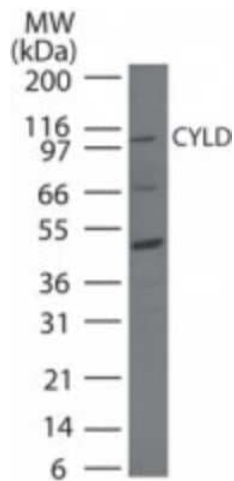
Immunocytochemistry/Immunofluorescence:
CYLD Antibody TA336362 - Staining of HeLa cell
using control (rabbit Ig) at 5 ug/ml.



Simple Western: CYLD Antibody TA336362 - Simple Western lane view shows a specific band for CYLD in 0.5 mg/ml of HeLa lysate. This experiment was performed under reducing conditions using the 12-230 kDa separation system.



Immunocytochemistry/Immunofluorescence: CYLD Antibody TA336362 - Staining of HeLa cell using this antibody at 5 ug/ml. ICC staining of HeLa cell using control (rabbit Ig) at 5 ug/ml.



Western Blot: CYLD Antibody TA336362 - Analysis of CYLD in HeLa cell lysate using this antibody.