

## Product datasheet for **TA336361**

### beta V Tubulin (TUBB) Rabbit Polyclonal Antibody

#### Product data:

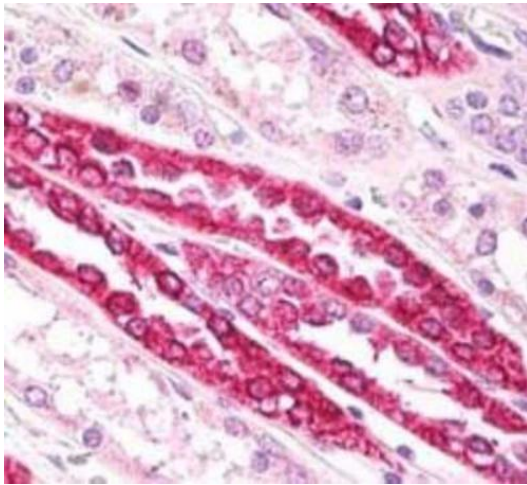
Product Type:	Primary Antibodies
Applications:	IHC, Simple Western, WB
Recommended Dilution:	Western Blot: 0.1 - 1 ug/mL, Immunohistochemistry: 1:100 - 1:1000, Immunohistochemistry-Paraffin: 5 - 10 ug/mL, Simple Western: 1:50
Reactivity:	Human, Mouse, Rat, Bovine, Canine, Chicken, Primate
Host:	Rabbit
Clonality:	Polyclonal
Immunogen:	A synthetic peptide corresponding to a portion of amino acids 400-450 of human b-tubulin was used as immunogen for this antibody, GenBank no. <a href="#">gi 27227551 gb AAN85571.1 </a> .
Formulation:	PBS containing 0.05% BSA, 0.05% Sodium Azide. Store at 4C short term. Aliquot and store at -20C long term. Avoid freeze-thaw cycles.
Concentration:	lot specific
Purification:	Protein G purified
Conjugation:	Unconjugated
Storage:	Store at -20°C as received.
Stability:	Stable for 12 months from date of receipt.
Gene Name:	tubulin beta class I
Database Link:	<a href="#">NP_821133</a> <a href="#">Entrez Gene 203068 Human P07437</a>
Background:	Alpha and beta Tubulin are the most common members of the tubulin family of proteins. Dimers of alpha and beta tubulin assemble to form microtubules.
Synonyms:	CDCBM6; CSCSC1; M40; OK; SW-cl.56; TUBB1; TUBB5
Protein Families:	Druggable Genome
Protein Pathways:	Gap junction, Pathogenic Escherichia coli infection



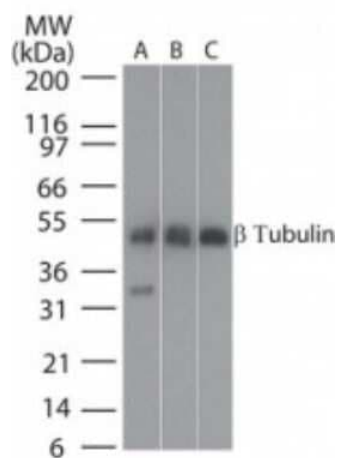
[View online »](#)

**Product images:**

Simple Western: beta Tubulin Antibody TA336361 - Image shows a specific band for beta Tubulin in 0.5 mg/mL of Human Brain lysate. This experiment was performed under reducing conditions using the 12-230 kDa separation system.



Immunohistochemistry-Paraffin: beta Tubulin Antibody TA336361 - Human kidney tubules stained with beta-Tubulin antibody at 10 ug/mL. Staining of formalin-fixed tissues is enhanced by boiling tissue sections in 10 mM sodium citrate buffer, pH 6.0 for 10-20 min followed by cooling at RT for 20 min.



Western Blot: beta Tubulin Antibody TA336361 - Analysis of beta-Tubulin in A: human brain, B: mouse brain and C: rat brain tissue lysates using the this antibody at 25 ug/mL.