

Product datasheet for **TA336355**

TIM 3 (HAVCR2) Rabbit Polyclonal Antibody

Product data:

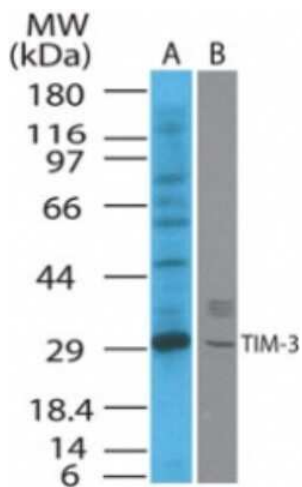
Product Type:	Primary Antibodies
Applications:	WB
Recommended Dilution:	Western Blot: 1-3 ug/ml
Reactivity:	Mouse
Host:	Rabbit
Clonality:	Polyclonal
Immunogen:	A portion of amino acids 100-200 of mouse TIM-3 protein were used as the immunogen.
Formulation:	PBS containing 0.05% BSA, 0.05% Sodium Azide. Store at 4C short term. Aliquot and store at -20C long term. Avoid freeze-thaw cycles.
Concentration:	lot specific
Purification:	Protein G purified
Conjugation:	Unconjugated
Storage:	Store at -20°C as received.
Stability:	Stable for 12 months from date of receipt.
Gene Name:	hepatitis A virus cellular receptor 2
Database Link:	NP_116171 Entrez Gene 171285 Mouse Q8TDQ0
Background:	Official Gene Symbol HAVCR2 Gene ID 84868(Human) Gene Map Locus 5q33.3(Human) HAVCR2 is a 281 A.A Type-1 Th1 specific cell surface glycoprotein expressed on terminally differentiated CD4+Th1 and CD8+Tc1 cells. It consists of an IgV-region like domain and a mucin-like domain in the extracellular region and a conserved Tyrosine phosphorylation motif in the cytoplasmic region. HAVCR2 regulates macrophage activation thereby down regulating aggressive Th-1 mediated immune responses and facilitates in the development of immune tolerance. It plays an important role in the induction of autoimmune diseases by regulating macrophage activation. Pathological significance of HAVCR2 has been attributed to Experimental autoimmune encephalomyelitis (EAE), a Th-1 dependent autoimmune disease.
Synonyms:	CD366; HAVcr-2; KIM-3; Tim-3; TIM3; TIMD-3; TIMD3



[View online »](#)

Protein Families: Druggable Genome, Transmembrane

Product images:



Western Blot: TIM-3 Antibody TA336355 - Analysis of TIM-3 in (A) mouse and (B) rat kidney cell lysate using this antibody at 2 ug/ml.