

## Product datasheet for **TA336354**

### **TIM 1 (HAVCR1) Rabbit Polyclonal Antibody**

#### **Product data:**

<b>Product Type:</b>	Primary Antibodies
<b>Applications:</b>	ICC/IF, WB
<b>Recommended Dilution:</b>	Immunocytochemistry/ Immunofluorescence, Western Blot: 1-3 ug/ml
<b>Reactivity:</b>	Human, Mouse
<b>Host:</b>	Rabbit
<b>Clonality:</b>	Polyclonal
<b>Immunogen:</b>	A synthetic peptide (SPLYSYTTDGN DTVT) of human TIM-1 protein was used as immunogen for this antibody. This sequence corresponds to amino acids (aa) 248-262 of NP_036338 and aa 84-98 of EAW61615.1. Isoforms of TIM-1 have been described. For example, NP_036
<b>Formulation:</b>	PBS containing 0.05% BSA, 0.05% Sodium Azide. Store at 4C short term. Aliquot and store at -20C long term. Avoid freeze-thaw cycles.
<b>Concentration:</b>	lot specific
<b>Purification:</b>	Protein G purified
<b>Conjugation:</b>	Unconjugated
<b>Storage:</b>	Store at -20°C as received.
<b>Stability:</b>	Stable for 12 months from date of receipt.
<b>Gene Name:</b>	hepatitis A virus cellular receptor 1
<b>Database Link:</b>	<a href="#">NP_036338</a> <a href="#">Entrez Gene 171283 Mouse</a> <a href="#">Entrez Gene 26762 Human</a> <a href="#">Q96D42</a>



[View online »](#)

**Background:**

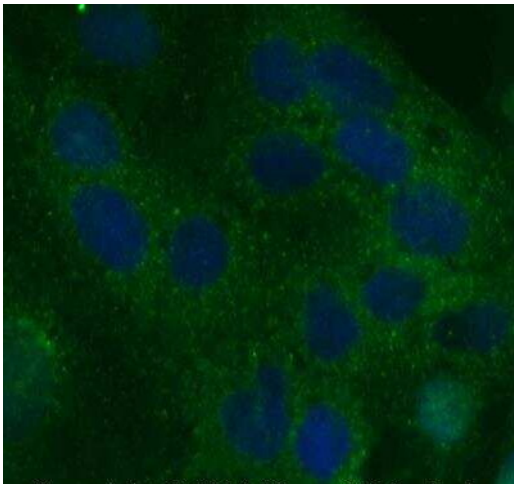
Official Gene Symbol HAVCR1 Gene ID 26762(Human) Gene Map Locus 5q33.2(Human) HAVCR1, a 359 A.A Class 1 integral membrane glycoprotein, is used by Hepatitis A virus to infect humans. It consists of a conserved N-terminal Cys-rich region, IgV (Immunoglobulin Variable region like) domain and a TSP-rich mucin domain in the extracellular region followed by a highly conserved tyrosine kinase phosphorylation motif in the cytoplasmic region. HAVCR1 is expressed on terminally differentiated CD4+ Th2 cells and regulates cytokine production. It plays an important role in the regulation of immune responses in the development of asthma and allergic responses. Its expression is critically upregulated in dedifferentiated kidney cells, thus indicating a possible role in regeneration of proximal tubule epithelium in Kidneys. HAVCR1 has shown to be upregulated in renal carcinomas, suggesting its role in tumor progression and metastasis.

**Synonyms:**

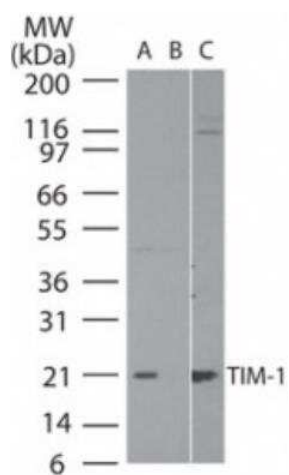
HAVCR; HAVCR-1; KIM-1; KIM1; TIM; TIM-1; TIM1; TIMD-1; TIMD1

**Protein Families:**

Druggable Genome, Transmembrane

**Product images:**

Immunocytochemistry/Immunofluorescence:  
TIM-1/KIM-1/HAVCR Antibody TA336354 - Caco-2 cells were fixed for 10 minutes using 10% formalin and then permeabilized for 5 minutes using 1X PBS + 0.05% Triton-X100. The cells were incubated with anti-TIM-1/KIM-1/HAVCR Antibody at 5 ug/ml overnight at 4C and detected with an anti-rabbit Dylight 488 (Green) at a 1:500 dilution. Nuclei were counterstained with DAPI (Blue). Cells were imaged using a 40X objective.



Western Blot: TIM-1/KIM-1/HAVCR Antibody TA336354 - Analysis of TIM-1/KIM-1/HAVCR in human brain lysate in the A) absence and B) presence of immunizing peptide, and C) mouse brain lysate using TIM-1 antibody at 2 ug/ml.