

Product datasheet for **TA336352**

IL20 Receptor alpha (IL20RA) Rabbit Polyclonal Antibody

Product data:

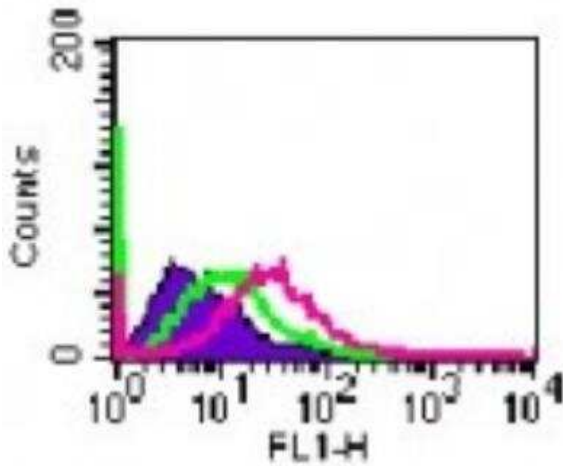
Product Type:	Primary Antibodies
Applications:	FC, WB
Recommended Dilution:	Western Blot: 1-3 ug/ml, Flow Cytometry: 2-5 ug/10 ⁶ cells
Reactivity:	Human, Mouse
Host:	Rabbit
Clonality:	Polyclonal
Immunogen:	Amino acids 159-175 of human IL-20 receptor alpha protein were used as the immunogen.
Formulation:	PBS containing 0.05% BSA, 0.05% Sodium Azide. Store at 4C short term. Aliquot and store at -20C long term. Avoid freeze-thaw cycles.
Concentration:	lot specific
Purification:	Protein G purified
Conjugation:	Unconjugated
Storage:	Store at -20°C as received.
Stability:	Stable for 12 months from date of receipt.
Gene Name:	interleukin 20 receptor subunit alpha
Database Link:	NP_055247 Entrez Gene 237313 Mouse Entrez Gene 53832 Human Q9UHF4
Background:	Official Gene Symbol: IL20RA Gene ID: 53832 (Human) Gene Map Locus: 6q22.33-q23.1 (Human) IL20RA, is a subunit of IL20R, a member of Cytokine Class II receptor super family. It consists of a central transmembrane domain and functionally induces IL20 and IL26 signaling in epithelial cells and keratinocytes. It associates with IL-20RB and forms a functional receptor complex for IL20, IL19, and IL24. It also associates with IL-10RB and forms a unique heterodimeric functional receptor complex for IL-26. Upon ligand binding, it induces signaling through activation of STAT3 and STAT1. IL20RA is specifically expressed in skin suggesting a prominent role in growth and proliferation of keratinocytes.
Synonyms:	CRF2-8; IL-20R-alpha; IL-20R1; IL-20RA
Protein Families:	Druggable Genome, Transmembrane



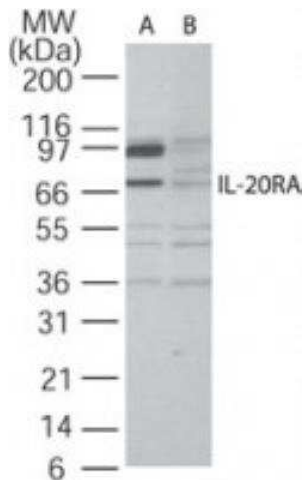
[View online »](#)

Protein Pathways: Cytokine-cytokine receptor interaction, Jak-STAT signaling pathway

Product images:



Flow Cytometry: IL-20 R alpha Antibody TA336352 - Cell-surface flow cytometry analysis of IL-20 R alpha Antibody in A375 cells using this antibody at 5 ug/10⁶ cells. The shaded histogram represents cells only, green represents isotype control, and purple represents anti-IL-20 R alpha Antibody



Western Blot: IL-20 R alpha Antibody TA336352 - Analysis of IL-20 R alpha Antibody in A375 cell lysate in the (A) absence and (B) presence of blocking peptide using this antibody at 2 ug/ml.