

Product datasheet for **TA336335**

CCR1 Rabbit Polyclonal Antibody

Product data:

Product Type:	Primary Antibodies
Applications:	FC, ICC/IF, IHC, WB
Recommended Dilution:	Immunohistochemistry, Immunocytochemistry/ Immunofluorescence, Flow (Cell Surface), Flow (Intracellular), Immunohistochemistry-Frozen, Flow Cytometry: 5-10 ul/test, Western Blot: 1-3 ug/ml, Immunohistochemistry-Paraffin: 5 ug/ml
Reactivity:	Human, Mouse
Host:	Rabbit
Clonality:	Polyclonal
Immunogen:	This antibody was raised against a synthetic peptide of human CCR1 protein.
Formulation:	PBS containing 0.05% BSA, 0.05% Sodium Azide. Store at 4C short term. Aliquot and store at -20C long term. Avoid freeze-thaw cycles.
Concentration:	lot specific
Purification:	Protein G purified
Conjugation:	Unconjugated
Storage:	Store at -20°C as received.
Stability:	Stable for 12 months from date of receipt.
Gene Name:	C-C motif chemokine receptor 1
Database Link:	NP_001286 Entrez Gene 12768 Mouse Entrez Gene 1230 Human P32246

Background: Chemokines play important roles in inflammation and critical for the recruitment of effector immune cells to sites of infection. Chemokines activate leukocytes by binding to G protein coupled receptors (1). The ever-growing chemokine receptor subtypes can be divided into 2 major groups, CXCR and CCR, based on the 2 major classes of chemokines. One of the CCR receptors, CCR1, is expressed on neutrophils, monocytes, lymphocytes, and eosinophils and binds the leukocyte chemoattractant and hemopoiesis regulator macrophage-inflammatory protein (MIP-1), eotaxin, as well as several other related chemokines (2-4). Mice lacking the chemokine receptor CCR1 have defects in neutrophil trafficking and proliferation (5,6).



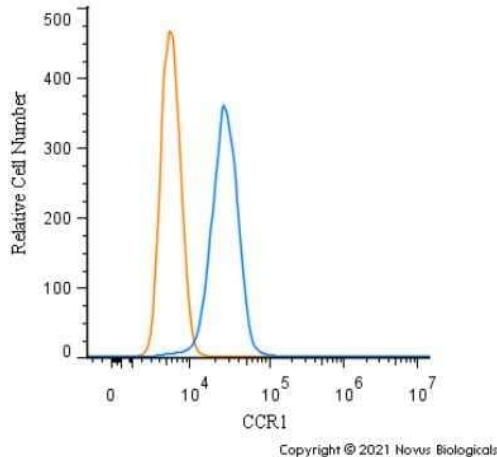
[View online »](#)

Synonyms: CD191; CKR-1; CKR1; CMKBR1; HM145; MIP1aR; SCYAR1

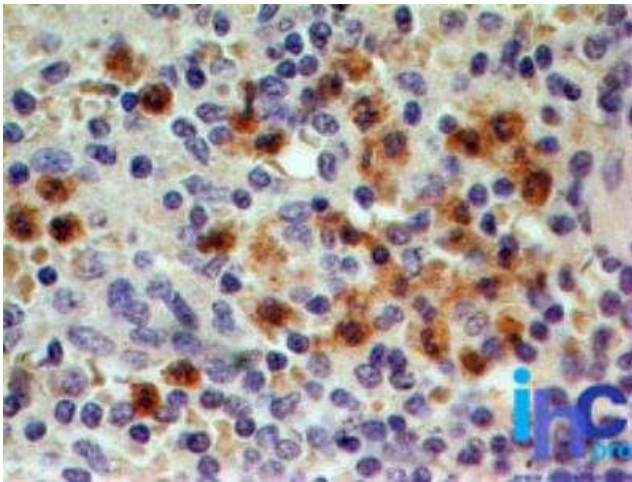
Protein Families: Druggable Genome, GPCR, Transmembrane

Protein Pathways: Chemokine signaling pathway, Cytokine-cytokine receptor interaction

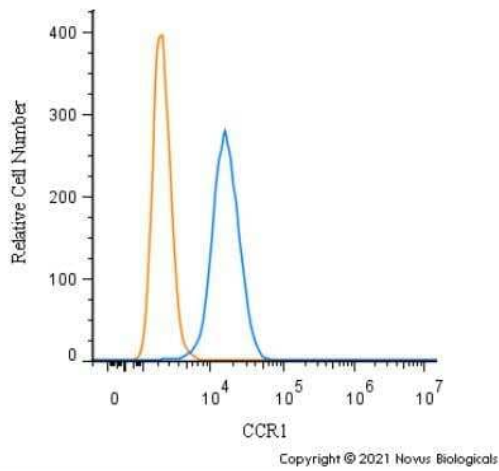
Product images:



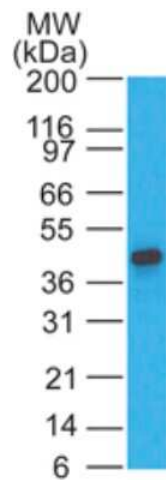
Flow (Intracellular): CCR1 Antibody TA336335 - An intracellular stain was performed on U-87 cells with CCR1 Antibody TA336335 (blue) and a matched isotype control NBP2-24891 (orange). Cells were fixed with 4% PFA and then permeabilized with 0.1% saponin. Cells were incubated in an antibody dilution of 1.0 ug/mL for 30 minutes at room temperature, followed by Rabbit IgG (H+L) Cross-Adsorbed Secondary Antibody, Dylight 550 (SA5-10033, Thermo Fisher).



Immunohistochemistry-Paraffin: CCR1 Antibody TA336335 - Normal human spleen tissue stained with this at 5 ug/ml, peroxidase-conjugate and DAB chromogen. Note granulocyte staining.



Flow (Intracellular): CCR1 Antibody TA336335 - An intracellular stain was performed on Raw264.7 cells with CCR1 Antibody TA336335 (blue) and a matched isotype control NBP2-24891 (orange). Cells were fixed with 4% PFA and then permeabilized with 0.1% saponin. Cells were incubated in an antibody dilution of 1.0 ug/mL for 30 minutes at room temperature, followed by Rabbit IgG (H+L) Cross-Adsorbed Secondary Antibody, Dylight 550 (SA5-10033, Thermo Fisher).



Western Blot: CCR1 Antibody TA336335 - A375 lysate probed with this antibody at 2 ug/ml dilution.