

## Product datasheet for **TA336332**

### **BAFF (TNFSF13B) Rabbit Polyclonal Antibody**

#### **Product data:**

<b>Product Type:</b>	Primary Antibodies
<b>Applications:</b>	IHC, WB
<b>Recommended Dilution:</b>	Western Blot: 0.5-2 ug/ml, Immunohistochemistry-Paraffin
<b>Reactivity:</b>	Human, Mouse
<b>Host:</b>	Rabbit
<b>Clonality:</b>	Polyclonal
<b>Immunogen:</b>	This rabbit polyclonal antibody was developed against a C-terminal peptide corresponding to amino acids 254-269 of human TNFSF13B.
<b>Formulation:</b>	PBS containing 0.05% BSA, 0.05% Sodium Azide. Store at 4C short term. Aliquot and store at -20C long term. Avoid freeze-thaw cycles.
<b>Concentration:</b>	lot specific
<b>Purification:</b>	Protein G purified
<b>Conjugation:</b>	Unconjugated
<b>Storage:</b>	Store at -20°C as received.
<b>Stability:</b>	Stable for 12 months from date of receipt.
<b>Gene Name:</b>	tumor necrosis factor superfamily member 13b
<b>Database Link:</b>	<a href="#">NP_006564</a> <a href="#">Entrez Gene 24099 Mouse</a> <a href="#">Entrez Gene 10673 Human</a> <a href="#">Q9Y275</a>



[View online »](#)

**Background:**

Simultaneously four different laboratories identified a new member of the tumor necrosis factor (TNF) family. This has been named as TALL-1, THANK (TNF homologue that activates apoptosis, nuclear factor-kappaB, and c-Jun NH2-terminal kinase, BAFF (for B cell activating factor belonging to the TNF family) and BLyS (B lymphocyte stimulator). Membrane-bound BLyS (BAFF) is processed and secreted through the action of a protease whose specificity matches that of the furin family of proprotein convertases. Secreted BLyS (BAFF) acts as a potent B cell growth factor. This protein is expressed abundantly in peripheral blood lymphocytes, specifically in monocytes and macrophages. BLyS (BAFF) regulation is upregulated by interferon gamma. Overexpression of BLyS (BAFF) in transgenic mice lead to increased numbers of mature B and effector T cells. These mice also develop autoimmune - like symptoms, such as high levels of rheumatoid factors, anti-DNA autoantibodies, etc.. Two receptors for BLyS (BAFF) have been identified and termed as BCMA and TACI.

**Synonyms:**

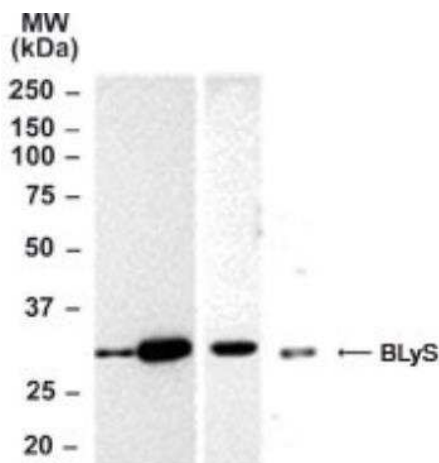
BAFF; BLYS; CD257; DTL; TALL-1; TALL1; THANK; TNFSF20; ZTNF4

**Protein Families:**

Druggable Genome, Secreted Protein, Transmembrane

**Protein Pathways:**

Cytokine-cytokine receptor interaction

**Product images:**

Western Blot: BAFF/BLyS/TNFSF13B Antibody TA336332 - Analysis of BAFF/BLyS/TNFSF13B in mouse and human lysates using BLyS antibody at 2 ug/ml. Lane A: mouse testis, Lane B: mouse thymus, Lane C: mouse spleen, and Lane D: HL-60 cells (human). Goat anti-rabbit Ig HRP secondary antibody and PicoTect ECL substrate solution were used for this test.