

Product datasheet for **TA336330**

TRAF6 Rabbit Polyclonal Antibody

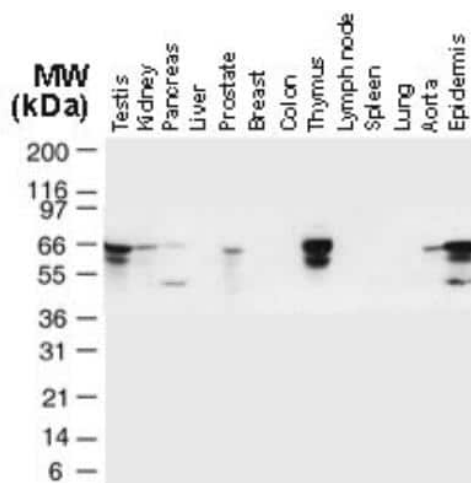
Product data:

Product Type:	Primary Antibodies
Applications:	IHC, IP, WB
Recommended Dilution:	Immunohistochemistry, Immunoprecipitation: 1:50-1:200, Western Blot: 1:1000-1:2000, Immunohistochemistry-Paraffin: 1:1000-1:5000
Reactivity:	Human, Mouse, Rat, Bovine
Host:	Rabbit
Clonality:	Polyclonal
Immunogen:	A synthetic peptide corresponding to amino acids 451-469 (DAKPELLAFQRPTIPRNPK) of human TRAF6 was used as immunogen, GenBank no. NP_665802.1.
Formulation:	Store at 4C short term. Aliquot and store at -20C long term. Avoid freeze-thaw cycles.
Concentration:	lot specific
Purification:	Whole antisera
Conjugation:	Unconjugated
Storage:	Store at -20°C as received.
Stability:	Stable for 12 months from date of receipt.
Gene Name:	TNF receptor associated factor 6
Database Link:	NP_004611 Entrez Gene 22034 Mouse Entrez Gene 311245 Rat Entrez Gene 7189 Human Q9Y4K3
Background:	The TRAF (TNF receptor-associated factor) family is a group of adapter proteins (TRAFs 1-6) that link a wide variety of cell surface receptors to diverse signaling cascades leading to the activation of NF- κ B and mitogen-activated protein kinases (reviewed in Chung et al, 2002). TRAFs are major signal transducers for both the TNF and IL- 1/TLR receptor superfamilies and collectively play important functions in both adaptive and innate immunity. The carboxy-terminal region of TRAFs is required for self-association and interaction with receptor cytoplasmic domains following ligand-induced oligomerization. TRAFs interact with a variety of proteins that regulate receptor-induced cell death or survival, and TRAF-mediated signaling can promote cell survival or interfere with death receptor-induced apoptosis.

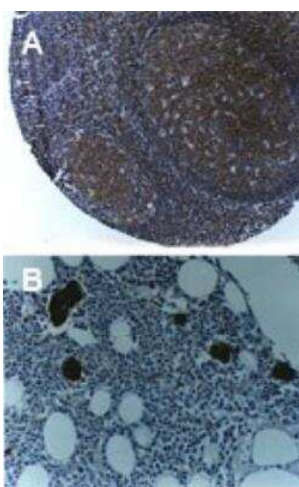


[View online »](#)

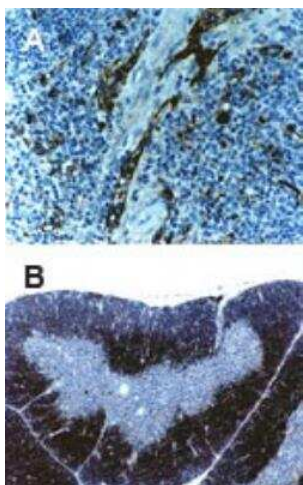
Synonyms: MGC:3310; RNF85
Protein Families: Druggable Genome
Protein Pathways: Endocytosis, MAPK signaling pathway, Neurotrophin signaling pathway, NOD-like receptor signaling pathway, Pathways in cancer, RIG-I-like receptor signaling pathway, Small cell lung cancer, Toll-like receptor signaling pathway, Ubiquitin mediated proteolysis

Product images:


Western Blot: TRAF-6 Antibody TA336330 - Analysis of TRAF-6 in normal Human tissues using this antibody. TRAF6 is observed at ~66 kDa. Additional bands of lower molecular weight were seen in some cases, and may represent TRAF-6 degradation fragments.



Immunohistochemistry-Paraffin: TRAF-6 Antibody TA336330 - 1:2000. Analysis Hematoxylin-eosin counterstain. A, mouse lymph node. B, mouse bone marrow.



Immunohistochemistry-Paraffin: TRAF-6 Antibody TA336330 - Stained for TRAF6 using this antibody at 1:2000. Hematoxylin-eosin counterstain. A, mouse spleen. B, mouse thymus.