

Product datasheet for **TA336325**

Caspase 8 (CASP8) Rabbit Polyclonal Antibody

Product data:

Product Type:	Primary Antibodies
Applications:	FC, ICC/IF, IHC, IP, Simple Western, WB
Recommended Dilution:	Western Blot: 1:1000-1:2000, Immunohistochemistry: 1:10-1:500, Immunocytochemistry/Immunofluorescence: 1:10-1:500, Immunoprecipitation: 1:50-1:200, Immunohistochemistry-Paraffin: 1:1000-1:5000, Immunohistochemistry-Frozen: 1:10-1:500, Flow Cytometry, Simple Western
Reactivity:	Human, Mouse, Rat, Gerbil
Host:	Rabbit
Clonality:	Polyclonal
Immunogen:	Recombinant catalytically active human Caspase-8 protein was used as immunogen.
Formulation:	Store at -20C. Avoid freeze-thaw cycles.
Concentration:	lot specific
Purification:	Whole antisera
Conjugation:	Unconjugated
Storage:	Store at -20°C as received.
Stability:	Stable for 12 months from date of receipt.
Predicted Protein Size:	55.4 kDa
Gene Name:	caspase 8
Database Link:	NP_203519 Entrez Gene 12370 Mouse Entrez Gene 64044 Rat Entrez Gene 841 Human Q14790

Background: Apoptosis occurs during normal cellular development and involves dramatic changes in cellular structure. Disruption of apoptosis may contribute to cancer as well as other autoimmune diseases. Caspase family of cysteine proteases has been shown to play a key role in apoptosis. Caspase-8 is a 55 kDa cytosolic protein that is synthesized as an inactive pro-enzyme. Activation of caspase-8 involves a two-step proteolysis: the cleavage of caspase-8 to generate a 43 and a 12 kDa fragment which is further processed to 10 kDa. The p43 is then cleaved to yield p26 and the release of the active site containing p18.



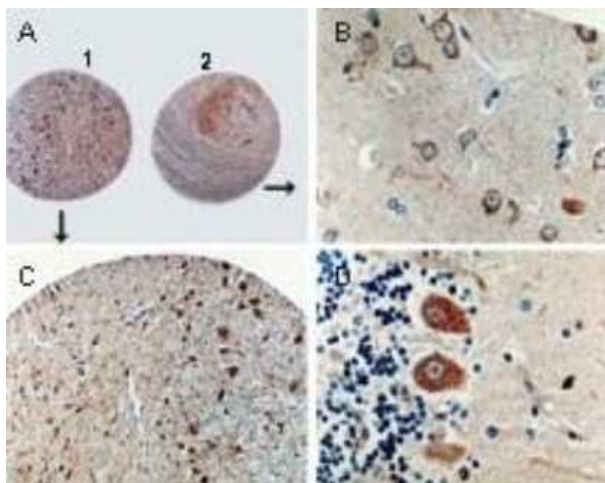
[View online »](#)

Synonyms: ALPS2B; CAP4; Casp-8; FLICE; MACH; MCH5

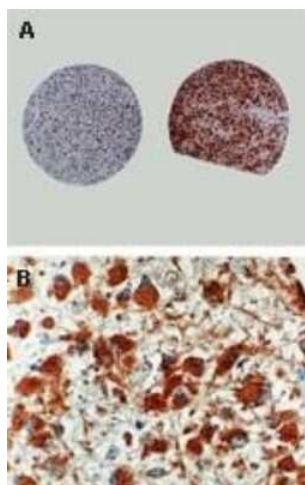
Protein Families: Druggable Genome, Protease

Protein Pathways: Alzheimer's disease, Apoptosis, Huntington's disease, NOD-like receptor signaling pathway, p53 signaling pathway, Pathways in cancer, RIG-I-like receptor signaling pathway, Toll-like receptor signaling pathway, Viral myocarditis

Product images:



Immunohistochemistry-Paraffin: Caspase-8 Antibody - (active/cleaved) TA336325 - Sections from a brain tissue array stained for Caspase-8 expression using TA336325 at 1:2000. A. Normal brain stem (1) and cortex (2). B. Higher magnification of cortex (from A). C. Higher magnification of brain stem (from A). D. Normal cerebellum showing caspase-8 staining in the Purkinje cells.



Immunohistochemistry-Paraffin: Caspase-8 Antibody - (active/cleaved) TA336325 - Sections from a brain tumor tissue array stained for Caspase-8 expression using TA336325 at 1:2000. A. Anaplastic glioma (Grade III, left) and Gemistocytoma (Grade II, right) cores showing negative and positive staining for Caspase-8, respectively. B. Higher magnification of the Gemistocytoma tumor (from A).