

Product datasheet for **TA336312**

Ku80 (XRCC5) Rabbit Polyclonal Antibody

Product data:

Product Type:	Primary Antibodies
Applications:	IP, WB
Recommended Dilution:	WB: 1:500
Reactivity:	Human, Mouse, Rat, Hamster
Host:	Rabbit
Clonality:	Polyclonal
Immunogen:	A synthetic peptide corresponding to residues 419-440 LVVYQLPFMEDLRQYMFSSLN] of the 80 kDa Ku80 protein.
Formulation:	PBS, 0.05% Sodium Azide. Store at 4C short term. Aliquot and store at -20C long term. Avoid freeze-thaw cycles.
Concentration:	lot specific
Purification:	Immunogen affinity purified
Conjugation:	Unconjugated
Storage:	Store at -20°C as received.
Stability:	Stable for 12 months from date of receipt.
Gene Name:	X-ray repair complementing defective repair in Chinese hamster cells 5
Database Link:	NP_066964 Entrez Gene 22596 Mouse Entrez Gene 363247 Rat Entrez Gene 7520 Human P13010
Background:	Telomere length maintenance, an activity essential for chromosome stability and genome integrity, is regulated by telomerase- and telomere-associated factors. The DNA repair protein Ku (a heterodimer of Ku70 and Ku80 subunits) associates with mammalian telomeres and contributes to telomere maintenance. The Ku heterodimer functions at two kinds of DNA ends: telomeres and double-strand breaks. The role that Ku plays at these two classes of termini must be distinct, because Ku is required for accurate and efficient joining of double-strand breaks while similar DNA repair events are normally prohibited at chromosome ends.
Synonyms:	KARP-1; KARP1; KU80; Ku86; KUB2; NFIV
Note:	This antibody has only been tested in Western blot.

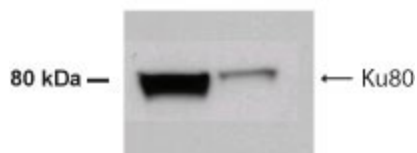


[View online »](#)

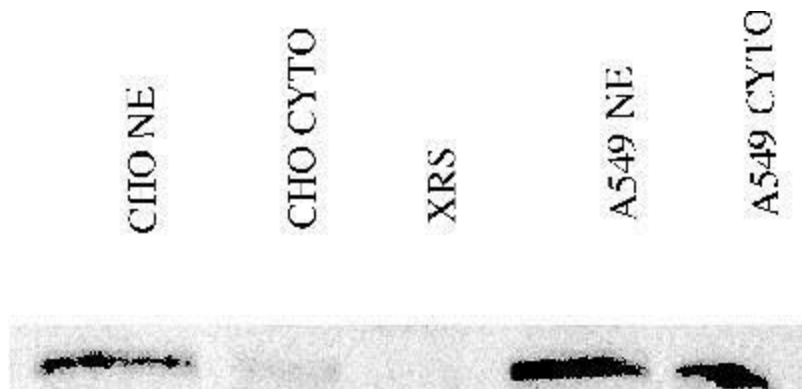
Protein Families: Druggable Genome, Stem cell - Pluripotency

Protein Pathways: Non-homologous end-joining

Product images:



Western Blot: Ku80 Antibody TA336312 - Analysis of Ku80 using TA336312 at 1:500 dilution on 50 ug of total lysates of A431 (lane 1) and AR42J (lane 2) cells.



Immunoprecipitation: Ku80 Antibody TA336312 - Detection of Ku80 in either CHO or A549 nuclear extracts (NE) or cytoplasmic lysates (cyto) using NB 100-508. A Ku80 deficient cell lysate, XRS, was used as a negative control.