

Product datasheet for **TA336310**

FANCD2 Rabbit Polyclonal Antibody

Product data:

Product Type:	Primary Antibodies
Applications:	WB
Recommended Dilution:	Western Blot: 1:100-1:500
Reactivity:	Human
Host:	Rabbit
Clonality:	Polyclonal
Immunogen:	A synthetic peptide made to human FANCD2 (residues 217-226), surrounding the phosphorylated Serine 222. [Swiss-Prot# Q9BXW9]
Formulation:	Aliquot and store at -20C or -80C. Avoid freeze-thaw cycles.
Concentration:	lot specific
Purification:	Whole antisera
Conjugation:	Unconjugated
Storage:	Store at -20°C as received.
Stability:	Stable for 12 months from date of receipt.
Gene Name:	Fanconi anemia complementation group D2
Database Link:	NP_001018125 Entrez Gene 2177 Human Q9BXW9



[View online »](#)

Background:

FANCD2 (Fanconi anemia group D2 protein) belongs to family of FANC proteins which includes several members such as FANC-A, -B, -C, -D1/BRCA2, -D2, -E, -F, -G, -I, -J/BRIP1, -L, -M and -N/PALB2. FANCD2 interacts with several proteins such as FANCE/FANCI, USP1, MEN1, BRCA1, BRCA2, BLM, MTMR15/FAN1 and DCLRE1B/Apollo. FANC proteins (-A, -B, -C, -D1, -D2, -E, -F, -G, -L) cooperate in FANC/BRCA pathway resulting in monoubiquitination of FANCD2 which then promotes BRCA2/FANCD1 loading onto chromatin for creating nuclear foci at DNA damage sites. It is involved in DNA double-strand breaks repair, both by homologous recombination and single-strand annealing. FANCD2 is required for maintenance of chromosomal stability and promotes accurate/efficient pairing of homologs during meiosis. FANCD2 may participate in S phase/G2 phase checkpoint activation upon DNA damage and plays a role in preventing breakage and loss of missegregating chromatin at the end of cell division, particularly after replication stress. Defects in FANCD2 are a cause of Fanconi anemia complementation group D type 2 characterized by anemia, leukopenia and thrombopenia.

Synonyms:

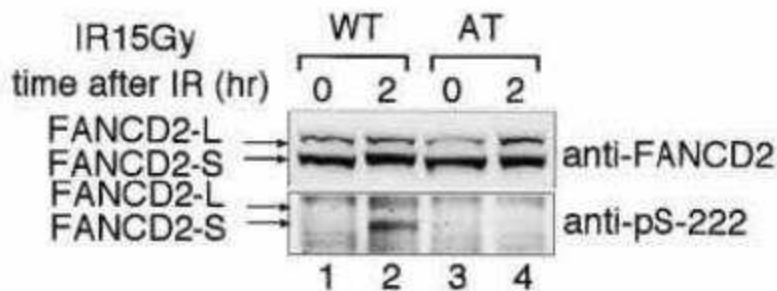
FA-D2; FA4; FACD; FAD; FAD2; FANCD

Note:

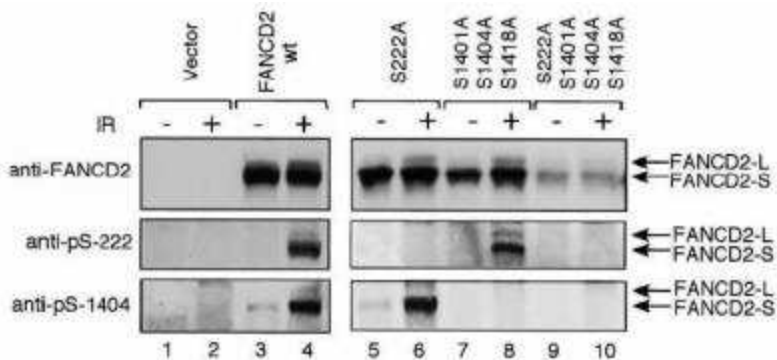
This FANCD2 [p Ser222] antibody is useful for Western Blot. 1:400 dilution recommended for PD20 FANCD2 overexpressing cells, 1:100 for HeLa cells, 1:200 for other cell types.

Protein Families:

Druggable Genome

Product images:


Western Blot: FANCD2 [p Ser222] Antibody TA336310 - Indicated lymphoblasts (PD7, WT: GM1526, AT) were irradiated with 15 Gy (2), and immunoblotted with anti-FANCD2 and anti-FANCD2 (pS-222)



Western Blot: FANCD2 [p Ser222] Antibody TA336310 - FA-D2 fibroblasts were stably transfected with either pMMP (empty vector, A), FANCD2 (wt, B), FANCD2 [p Ser222] Antibody (C), FANCD2 (triple mutant, D), or FANCD2 (quadruple mutant, E).