

## Product datasheet for **TA336306**

### FOXP3 Rabbit Polyclonal Antibody

#### Product data:

Product Type:	Primary Antibodies
Applications:	FC, ICC/IF, IHC, Immunoblotting, IP, WB
Recommended Dilution:	Single Cell Western: 100 ug/mL, Western Blot: 1:2000, Flow Cytometry: 1:8000, Immunocytochemistry/ Immunofluorescence: 1:500, Immunoprecipitation, Immunohistochemistry-Paraffin: 1:400, Immunoblotting, Immunohistochemistry: 1:400, Dual RNAscope ISH-IHC
Reactivity:	Human, Mouse
Host:	Rabbit
Clonality:	Polyclonal
Immunogen:	A peptide corresponding to amino acids 43-100 of mouse FOXP3. [Swiss-Prot# Q99JB6]
Formulation:	Tris-citrate/phosphate, pH 7, 0.1% Sodium azide. Store at 4C. Do not freeze.
Concentration:	lot specific
Purification:	Protein G purified
Conjugation:	Unconjugated
Storage:	Store at -20°C as received.
Stability:	Stable for 12 months from date of receipt.
Gene Name:	forkhead box P3
Database Link:	<a href="#">NP_054728</a> <a href="#">Entrez Gene 20371 Mouse</a> <a href="#">Entrez Gene 50943 Human</a> <a href="#">Q9BZS1</a>
Background:	FOXP3 (a 381 amino acid protein) is a member of the forkhead/winged-helix family of transcriptional regulators and is highly conserved across mammals. FOXP3 is essential for normal immune homeostasis. FOXP3 is stably and constitutively expressed at a high level in CD25 + CD4 positive regulatory T cells, a low level in CD4-positive/CD25-negative cells, and is absent in CD4-negative/CD8-positive T cells. FOXP3 may be a master regulatory gene and a more specific marker of regulatory T cells than other T cells.
Synonyms:	AIID; DIETER; IPEX; JM2; PIDX; XPID

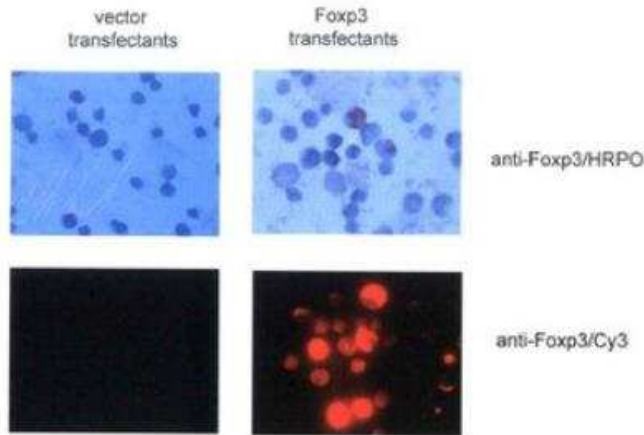


[View online »](#)

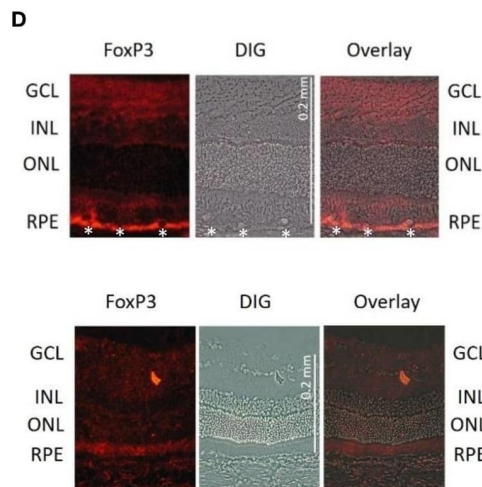
**Note:** This FOXP3 antibody can be used for Immunoprecipitation, Immunohistochemistry paraffin embedded sections and Western blot analysis, where a band is seen ~48 kDa in FOXP3 transfected and CD25/CD4 positive regulatory T cell lysates. In IP transfected FOXP3-HA tagged proteins were used. In IHC-P, staining was observed in the nuclei of mouse spleen cells. Prior to immunostaining paraffin tissues, antigen retrieval with sodium citrate buffer (pH 6.0) is recommended.

**Protein Families:** Transcription Factors

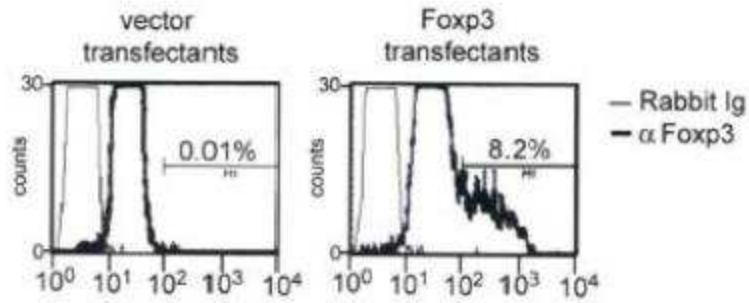
**Product images:**



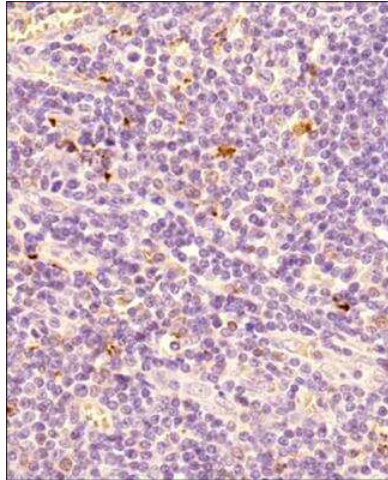
Immunocytochemistry/Immunofluorescence: FoxP3 Antibody TA336306 - Transfectants were stained with anti-Foxp3 antibody and HRPO-conjugated (upper panel) or Cy3-conjugated (lower panels) secondary antibody. Representative images (x100) are shown.



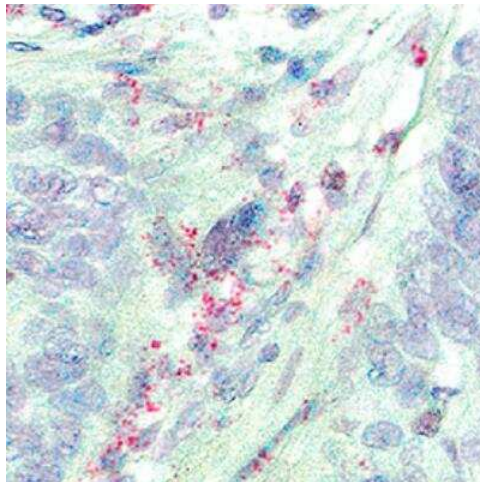
Effects of anaphylatoxins on transcription factor phosphorylation in ARPE-19 cells.(D) Immunofluorescence staining of FoxP3. Upper panel: Lewis rat (albino) eye with experimental uveitis; lower panel: normal rat eye. Asterisks mark immune cells infiltrating the retina from the choroid through the retinal pigment epithelium (RPE) in the eye with uveitis (clinical score of 2, histological score of 1).



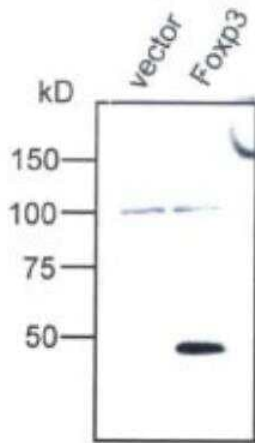
Flow Cytometry: FoxP3 Antibody TA336306 - Transfectants were permeabilized and stained with anti-Foxp3 antibody and FITC-conjugated secondary antibody. Cells were analyzed by flow cytometry. Percentage of positively stained cells are shown.



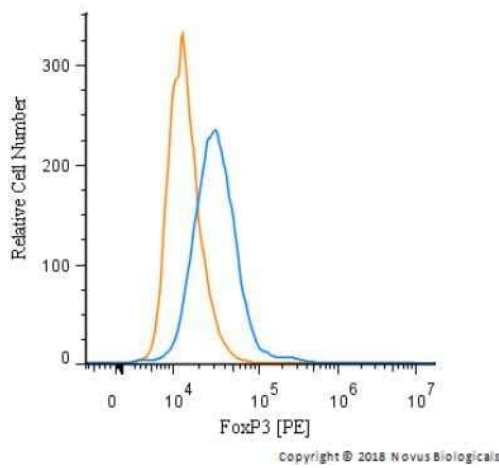
Immunohistochemistry-Paraffin: FoxP3 Antibody TA336306 - Tissue section of human tonsil using 1:200 dilution of rabbit anti-FoxP3 antibody. The staining was developed with HRP-labeled anti-rabbit IgG secondary antibody and DAB reagent, and nuclei of cells were counterstained with hematoxylin. This FoxP3 antibody generated an expected and a specific nuclear staining of FOXP3 in a subset of cells which are potentially the Treg cells.



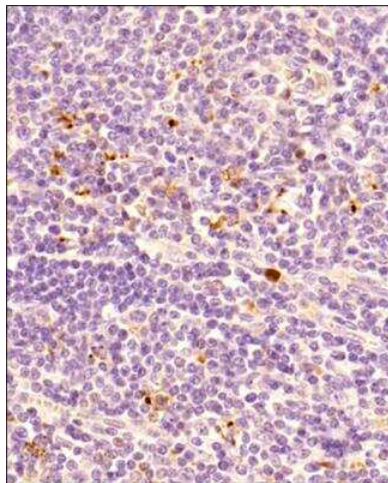
Dual RNAscope ISH-IHC: FoxP3 Antibody TA336306 - CD4 mRNA (red) and FOXP3 protein (green) were detected in formalin-fixed paraffin-embedded tissue sections of human breast cancer. ACD's Integrated Co-Detection Workflow was performed using ACD RNAscope Probe Hs-CD4 and FOXP3 antibody at 1:200 dilution. Tissue was stained on Leica Bond RX using RNAscope (TM) 2.5 LS Reagent Kit-RED, BOND Polymer Refine Detection (DAB) and Hematoxylin, BOND Polymer Refine Red Detection and Hematoxylin and RNAscope (TM) 2.5 LS Green Accessory Pack. Tissue was counterstained with 50% hematoxylin (blue).



Western Blot: FoxP3 Antibody TA336306 - Jurkat Tag cells were transfected with the expression vector (vector) or with the Foxp3 expression construct (Foxp3). 24 hours after transfection, cells were lysed and analyzed by Western blot with anti-Foxp3 antiserum (1:2000 dilution).

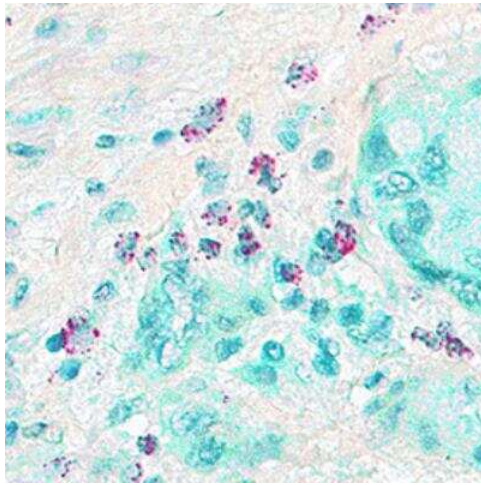


Flow Cytometry: FoxP3 Antibody TA336306 - An intracellular stain was performed on MCF7 cells with FoxP3 Antibody TA336306PE (blue) and a matched isotype control (orange). Cells were fixed with 4% PFA and then permeabilized with 0.1% saponin. Cells were incubated in an antibody dilution of 5 ug/mL for 30 minutes at room temperature. Both antibodies were conjugated to Phycoerythrin.

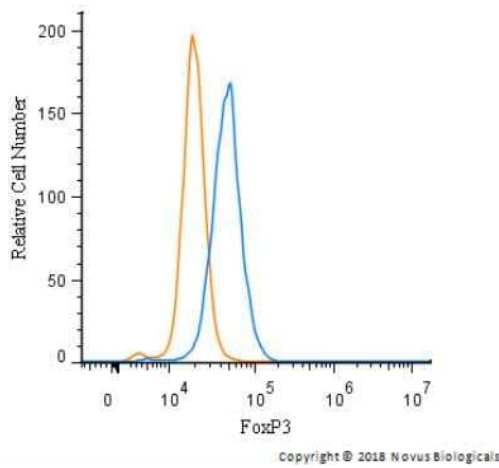


Immunohistochemistry-Paraffin: FoxP3 Antibody TA336306 - Tissue section of human tonsil using 1:200 dilution of rabbit anti-FoxP3 antibody. The staining was developed with HRP-labeled anti-rabbit IgG secondary antibody and DAB reagent, and nuclei of cells were counter-stained with hematoxylin. This FoxP3 antibody generated an expected and a specific nuclear staining of FOXP3 in a subset of cells which are potentially the Treg cells.

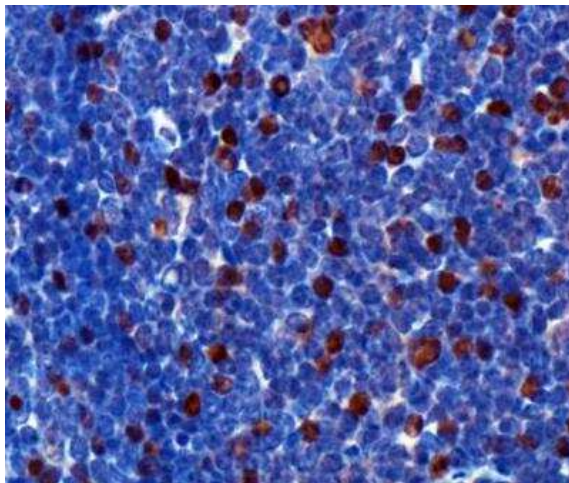




Dual RNAscope ISH-IHC: FoxP3 Antibody TA336306 - CD8A mRNA (red) and FOXP3 protein (green) were detected in formalin-fixed paraffin-embedded tissue sections of human breast cancer. ACD's Integrated Co-Detection Workflow was performed using ACD RNAscope Probe Hs-CD8A and FoxP3 antibody at 1:400 dilution. Tissue was stained on Leica Bond RX using RNAscope (TM) 2.5 LS Reagent Kit-RED, BOND Polymer Refine Detection (DAB) and Hematoxylin, BOND Polymer Refine Red Detection and Hematoxylin and RNAscope (TM) 2.5 LS Green Accessory Pack. Tissue was counterstained with 50% hematoxylin (blue).



Flow Cytometry: FoxP3 Antibody TA336306 - An intracellular stain was performed on SK-MEL-28 cells with TA336306 (blue) and a matched isotype control (orange). Cells were fixed with 4% PFA and then permeabilized with 0.1% saponin. Cells were incubated in an antibody dilution of 2.5 ug/mL for 30 minutes at room temperature, followed by Rabbit IgG (H+L) Cross-Adsorbed Secondary Antibody.



Immunohistochemistry: FoxP3 Antibody TA336306 - Antibody was tested in mouse spleen using DAB with hematoxylin counterstain.