

Product datasheet for **TA336290**

LOX Rabbit Polyclonal Antibody

Product data:

Product Type:	Primary Antibodies
Applications:	IF, WB
Recommended Dilution:	WB: 1:1000, IF: 1:100
Reactivity:	Human, Mouse
Host:	Rabbit
Clonality:	Polyclonal
Immunogen:	A synthetic peptide made to an internal region of the human LOX protein (within residues 300-350). [Swiss-Prot P28300]
Formulation:	PBS, 0.01% Sodium Azide. Aliquot and store at -20C or -80C. Avoid freeze-thaw cycles.
Concentration:	lot specific
Purification:	Immunogen affinity purified
Conjugation:	Unconjugated
Storage:	Store at -20°C as received.
Stability:	Stable for 12 months from date of receipt.
Gene Name:	lysyl oxidase
Database Link:	NP_002308 Entrez Gene 16948 Mouse Entrez Gene 4015 Human P28300



[View online »](#)

Background:

LOX (lysyl oxidase) is a copper-dependent amine oxidase enzyme responsible for post-translational oxidative deamination of peptidyl lysine residues in precursors to fibrous collagen and elastin. LOX is synthesized as an inactive 50 kD proenzyme that is N-glycosylated in ER/Golgi complex and then secreted into extracellular environment, where it is processed by pro-collagen C-proteinases (mammalian Tolloids and BMP-1) into an active enzyme (28-32 kD) and an 18 kD propeptide (LOX-PP) which can be N-glycosylated intracellularly into a ~35 kD form. LOX activity is critical in maintaining the tensile as well as elastic features of the connective tissues of skeletal, pulmonary and cardiovascular systems. LOX deficiency leads to intra-gestational lethality in LOX^{-/-} mice wherein the pups exhibits aortic aneurysms/tortuosity/rupture. LOX expression is highly regulated during normal development; and, its aberrant expression or activity has been documented in a range of diseases predominantly associated with the ECM such as Cutis laxa or OHS (occipital horn syndrome), Menkes' syndrome, myocardial ischaemia/heart failure, atherosclerosis, scleroderma, liver cirrhosis, Pseudoexfoliation syndrome and glaucoma, Alzheimer's/non-Alzheimer's dementia, Wilson's disease, primary biliary cirrhosis as well as in many type of cancers, wherein LOX implicates in promoting tumor cell invasion and metastasis.

Synonyms:

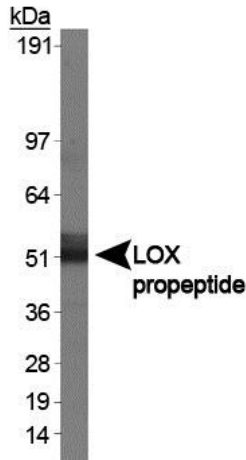
MGC105112

Note:

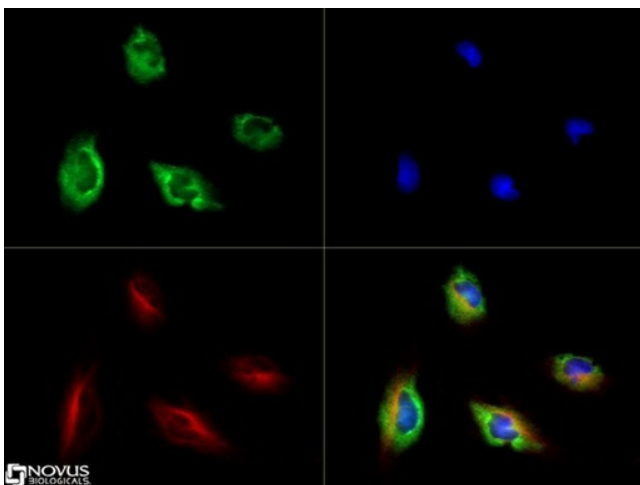
This LOX antibody is useful for Immunocytochemistry/Immunofluorescence and Western blot analysis. In Western blot a band is observed ~50 kDa representing the LOX propeptide. In ICC/IF, cytoplasmic staining was observed in HeLa cells.

Protein Families:

Druggable Genome, Secreted Protein

Product images:

Western Blot: LOX Antibody TA336290 - Analysis of LOX in human kidney



Immunocytochemistry/Immunofluorescence: LOX Antibody TA336290 - LOX antibody was tested in HeLa cells with Dylight 488 (green). Nuclei and alpha-tubulin were counterstained with DAPI (blue) and Dylight 550 (red).