

## Product datasheet for **TA336285**

### INCENP Rabbit Polyclonal Antibody

#### Product data:

Product Type:	Primary Antibodies
Applications:	IF, WB
Recommended Dilution:	WB: 2 ug/ml, IF: 0.006-0.01 ug/ml
Reactivity:	Human
Host:	Rabbit
Clonality:	Polyclonal
Immunogen:	The epitope recognized by this antibody maps to a region between residue 325 and 400 of human INCENP using the numbering given in entry Q9NQS7 (GeneID 3619).
Formulation:	Tris-citrate/phosphate, pH 7, 0.1% Sodium azide. Store at 4C. Do not freeze.
Concentration:	lot specific
Purification:	Immunogen affinity purified
Conjugation:	Unconjugated
Storage:	Store at -20°C as received.
Stability:	Stable for 12 months from date of receipt.
Gene Name:	inner centromere protein
Database Link:	<a href="#">NP_001035784</a> <a href="#">Entrez Gene 3619 Human</a> <a href="#">Q9NQS7</a>



[View online »](#)

**Background:**

INCENP (inner centromere protein) is one of the key components of the CPC complex (BIRC5/survivin, CDCA8/borealin, INCENP, AURKB and AURKC) which implicates in the regulation of mitotic cell division. CPC complex play a critical role at centromeres in facilitating correct chromosome alignment/segregation and is essential for chromatin-induced microtubule stabilization as well as spindle assembly. INCENP has been shown to localize to inner kinetochore and on chromosome arms and inner centromeres from prophase through metaphase and then transferring to spindle midzone and midbody from anaphase through cytokinesis. INCENP exists as a homodimer or heterodimer, interacts with several proteins that includes H2AFZ, CBX3, tubulin beta chain, AURKB/AURKC, EVI5, CDCA8, BIRC5, CBX5; CBX5, POGZ, and JTB. Moreover, INCENP colocalizes with AURKB at mitotic chromosomes where INCENP-AURKB/AURKC association is important for its functions and INCENP also binds directly to microtubules for regulating the kinetochore localization of BUB1.

**Synonyms:**

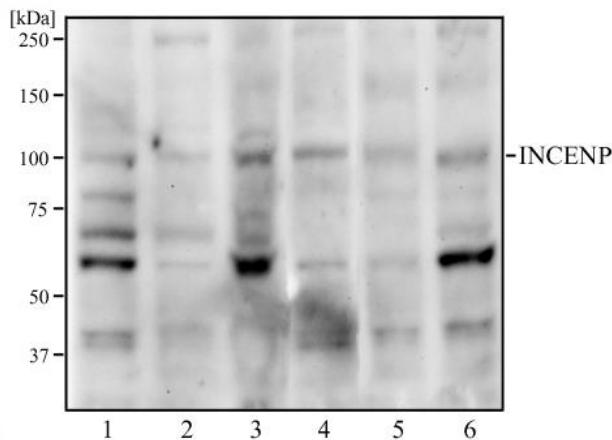
FLJ31633; MGC111393

**Note:**

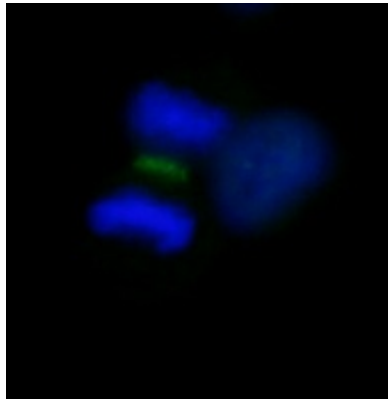
This INCENP antibody is useful for Immunocytochemistry/Immunofluorescence. With formaldehyde-fixed cells permeabilization with Triton-X 100 is recommended. Likely to work with frozen sections.

**Protein Families:**

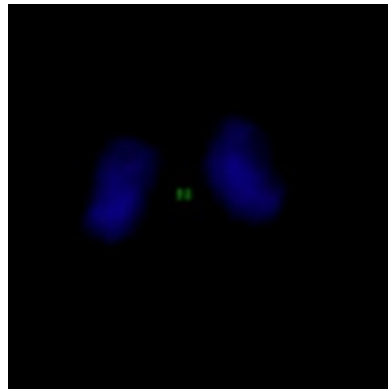
Druggable Genome

**Product images:**

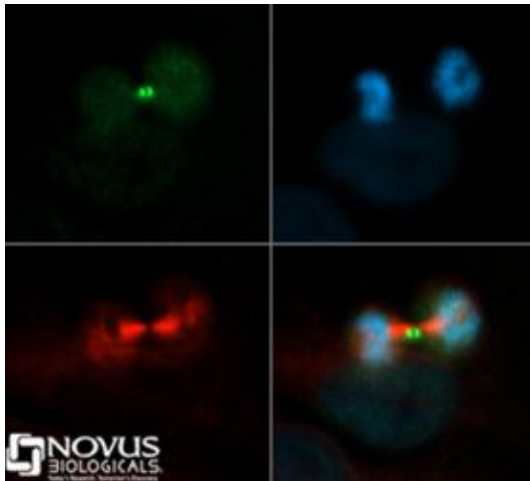
Western Blot: INCENP Antibody TA336285 - Western blot analysis of HeLa (1), A431 (2), MCF7 (3), HEK293 (4), Neuro2a (5), and Raw 264.7 (6) cell lysate using INCENP antibody at a concentration of 2 ug/ml.



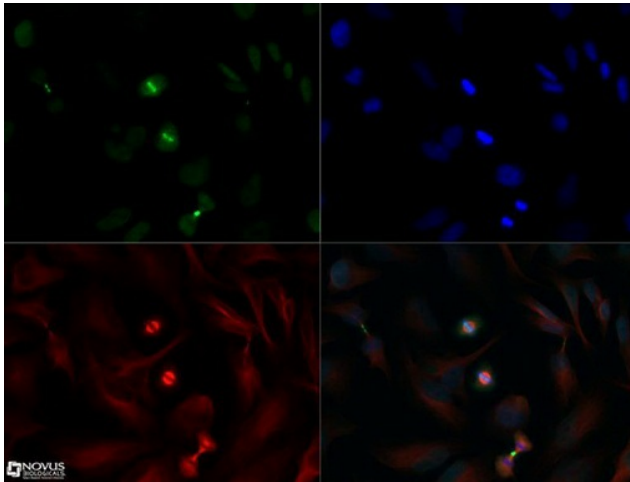
Immunocytochemistry/Immunofluorescence:  
 INCENP Antibody TA336285 - Detection of Human INCENP by Immunocytochemistry. Sample: NBF-fixed asynchronous HeLa cells. Antibody: Affinity purified rabbit anti-INCENP (NB100-2806) used at a dilution of 1:250.



Immunocytochemistry/Immunofluorescence:  
 INCENP Antibody TA336285 - Detection of Human INCENP by Immunocytochemistry. Sample: NBF-fixed asynchronous HeLa cells. Antibody: Affinity purified rabbit anti-INCENP (TA336285) used at a dilution of 1:250. D



Immunocytochemistry/Immunofluorescence:  
 INCENP Antibody TA336285 - INCENP antibody was tested in HeLa cells with Dylight 488 (green). Nuclei and alpha-tubulin were counterstained with DAPI (blue) and Dylight 550 (red).



Immunocytochemistry/Immunofluorescence:  
INCENP Antibody TA336285 - INCENP antibody  
was tested in HeLa cells with Dylight 488 (green).  
Nuclei and alpha-tubulin were counterstained  
with DAPI (blue) and Dylight 550 (red). A  
concentration of 0.006 ug/ml was