

Product datasheet for **TA336280**

RUNX1 Rabbit Polyclonal Antibody

Product data:

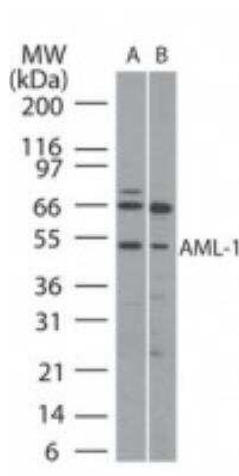
Product Type:	Primary Antibodies
Applications:	WB
Recommended Dilution:	Western Blot: 2-5 ug/ml
Reactivity:	Human, Mouse
Host:	Rabbit
Clonality:	Polyclonal
Immunogen:	Rabbit anti-AML-1 polyclonal antibody was raised against a peptide corresponding to a sequence that is homologous in AML-1 and AML-1/ETO (amino acids 231 to 245 of human origin).
Formulation:	PBS containing 0.05% BSA, 0.05% Sodium Azide. Store at 4C short term. Aliquot and store at -20C long term. Avoid freeze-thaw cycles.
Concentration:	lot specific
Purification:	Protein G purified
Conjugation:	Unconjugated
Storage:	Store at -20°C as received.
Stability:	Stable for 12 months from date of receipt.
Predicted Protein Size:	49 kDa
Gene Name:	runt related transcription factor 1
Database Link:	NP_001745 Entrez Gene 12394 Mouse Entrez Gene 861 Human Q01196
Background:	AML-1 is a DNA-binding protein which specifically interacts with a sequence belonging to the group of enhancer core motifs, TGT/cGGT. The AML1 gene on chromosome 21 is disrupted in the (8;21)(q22;q22) translocation associated with acute myelogenous leukemia and encodes a protein with a central 118-amino-acid domain with 69% homology to the Drosophila pair-rule gene, runt. AML-1 translocation is frequently observed in acute myeloid leukemia. It is a key transactivator of tissue-specific genes of the hematopoietic and bone lineages.
Synonyms:	AML1; AML1-EVI-1; AMLCR1; CBFA2; EVI-1; PEBP2aB


[View online »](#)

Protein Families: Druggable Genome, ES Cell Differentiation/IPS, Transcription Factors

Protein Pathways: Acute myeloid leukemia, Chronic myeloid leukemia, Pathways in cancer

Product images:



Western Blot: RUNX1/CBFA2 Antibody TA336280 - Used at 5 ug/ml to analyze AML1 in (A) human Ramos and (B) mouse Raw cell lysate.