

Product datasheet for **TA336278**

Calnexin (CANX) Rabbit Polyclonal Antibody

Product data:

Product Type:	Primary Antibodies
Applications:	FC, ICC/IF, IHC, IP, Simple Western, WB
Recommended Dilution:	Flow Cytometry: 1-5 ug/ml, Immunocytochemistry/ Immunofluorescence: 1-5 ug/ml, Immunohistochemistry: 1:40, Immunoprecipitation: 1:100, Western Blot: 2 ug/ml, Immunohistochemistry-Paraffin: 1:40, Simple Western: 1:25
Reactivity:	Human, Mouse, Rat, Bovine, Chicken, Avian, Drosophila
Host:	Rabbit
Clonality:	Polyclonal
Immunogen:	A synthetic peptide made to an internal region of the canine Calnexin protein (within residues 25-100). [Swiss-Prot P24643]
Formulation:	PBS, 0.05% Sodium Azide. Store at 4C short term. Aliquot and store at -20C long term. Avoid freeze-thaw cycles.
Concentration:	lot specific
Purification:	Immunogen affinity purified
Conjugation:	Unconjugated
Storage:	Store at -20°C as received.
Stability:	Stable for 12 months from date of receipt.
Predicted Protein Size:	97 kDa
Gene Name:	calnexin
Database Link:	NP_001737 Entrez Gene 12330 Mouse Entrez Gene 29144 Rat Entrez Gene 821 Human P27824
Synonyms:	CNX; IP90; P90
Note:	This Calnexin antibody is useful for Immunocytochemistry/Immunofluorescence, Immunohistochemistry-paraffin embedded sections, Immunoprecipitation and Western Blot. In Western blot a band is observed ~97 kDa. Prior to immunostaining paraffin tissues, antigen retrieval with sodium citrate buffer (pH 6.0) is recommended.
Protein Families:	Druggable Genome, Transmembrane



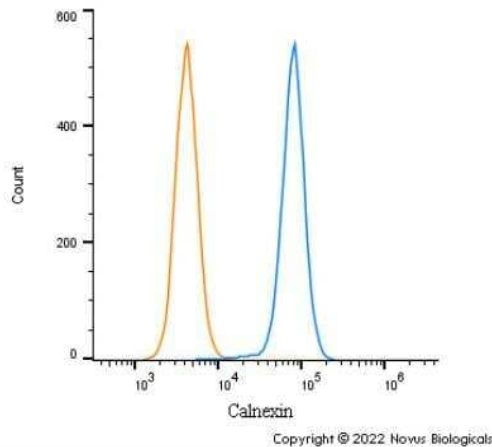
[View online »](#)

Protein Pathways: Antigen processing and presentation

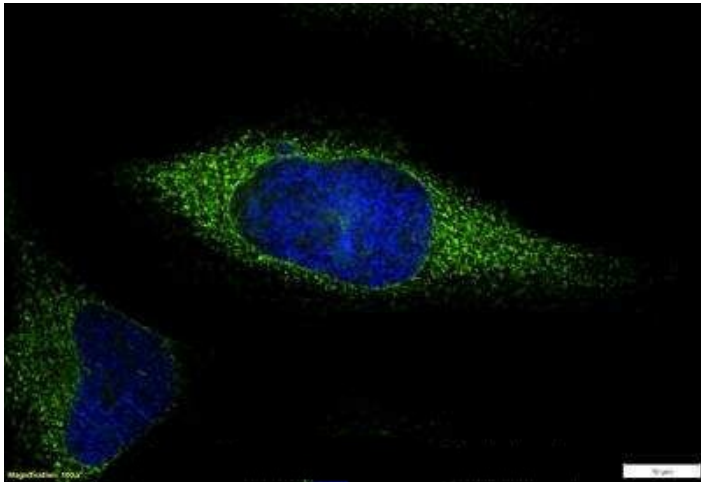
Product images:



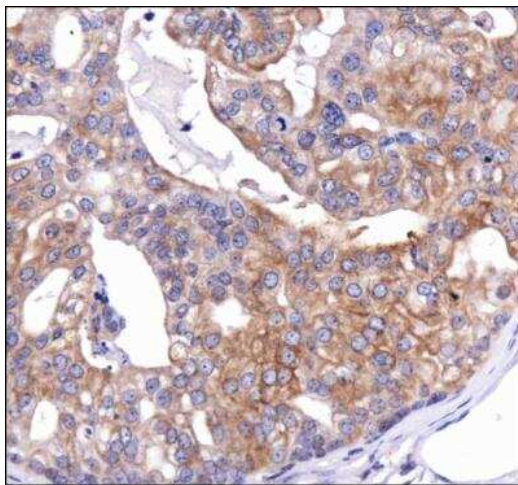
Simple Western: Calnexin Antibody TA336278 - Simple Western lane view shows a specific band for Calnexin in 1.0 mg/ml of HeLa lysate. This experiment was performed under reducing conditions using the 12-230 kDa separation system.



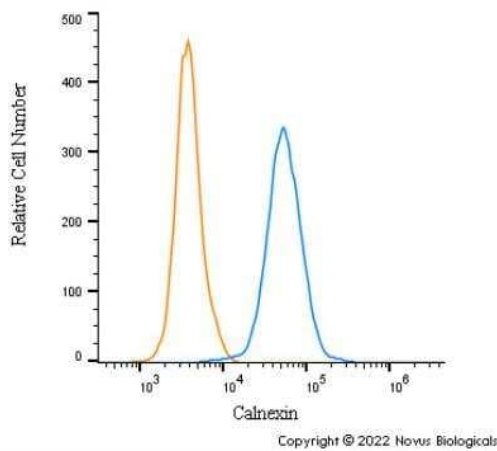
Flow Cytometry: Calnexin Antibody TA336278 - An intracellular stain was performed on Daudi cells with Calnexin Antibody TA336278 (blue) and a matched isotype control NBP2-24891 (orange). Cells were fixed with 4% PFA and then permeabilized with 0.1% saponin. Cells were incubated in an antibody dilution of 1.0 μ g/mL for 30 minutes at room temperature, followed by Rabbit IgG (H+L) Cross-Adsorbed Secondary Antibody, Dylight 550 (SA5-10033, Thermo Fisher).



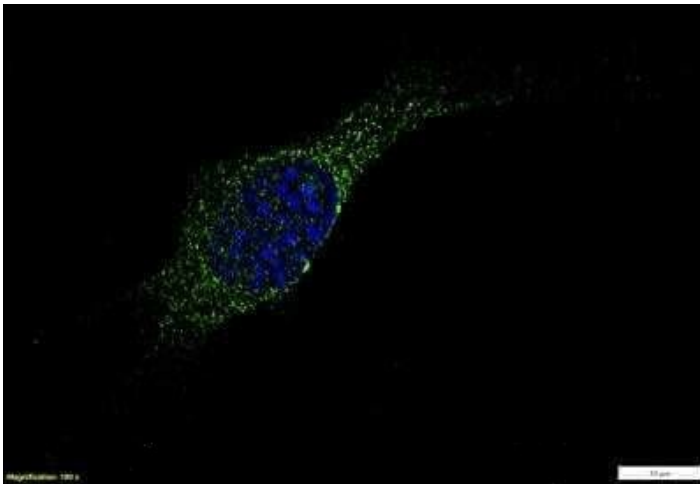
Immunocytochemistry/Immunofluorescence: Calnexin Antibody TA336278 - HeLa cells were fixed in 4% paraformaldehyde for 10 minutes and permeabilized in 0.05% Triton X-100 in PBS for 5 minutes. The cells were incubated with (TA336278) at 1 ug/ml overnight at 4C and detected with an anti-rabbit DyLight 488 (Green) at a 1:1000 dilution for 60 minutes. Nuclei were counterstained with DAPI (Blue). Cells were imaged using a 100X objective and digitally deconvolved.



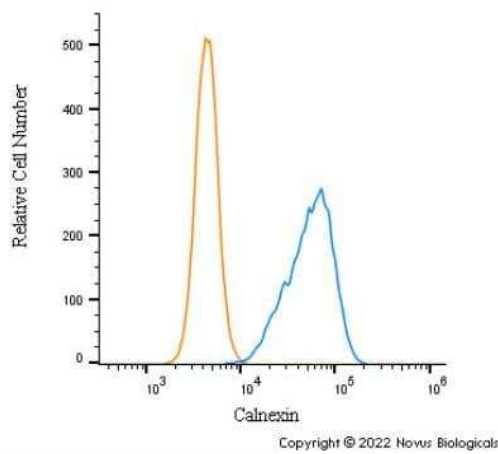
Immunohistochemistry: Calnexin Antibody TA336278 - IHC analysis of CANX in mouse prostate using DAB with hematoxylin counterstain.



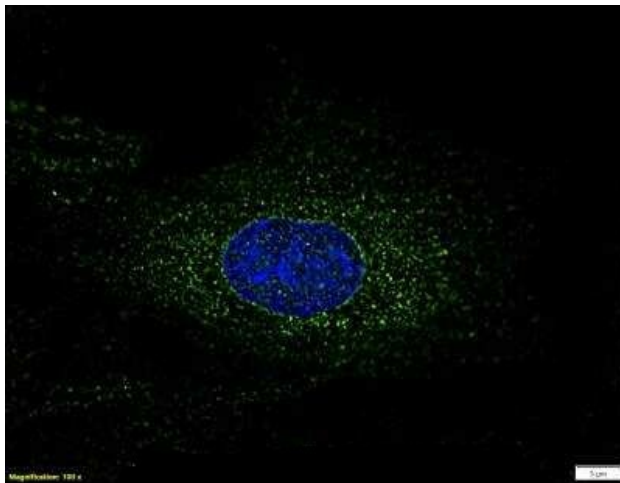
Flow Cytometry: Calnexin Antibody TA336278 - An intracellular stain was performed on rat FR cells with Calnexin Antibody TA336278 (blue) and a matched isotype control NBP2-24891 (orange). Cells were fixed with 4% PFA and then permeabilized with 0.1% saponin. Cells were incubated in an antibody dilution of 1.0 ug/mL for 30 minutes at room temperature, followed by Rabbit IgG (H+L) Cross-Adsorbed Secondary Antibody, DyLight 550 (SA5-10033, Thermo Fisher).



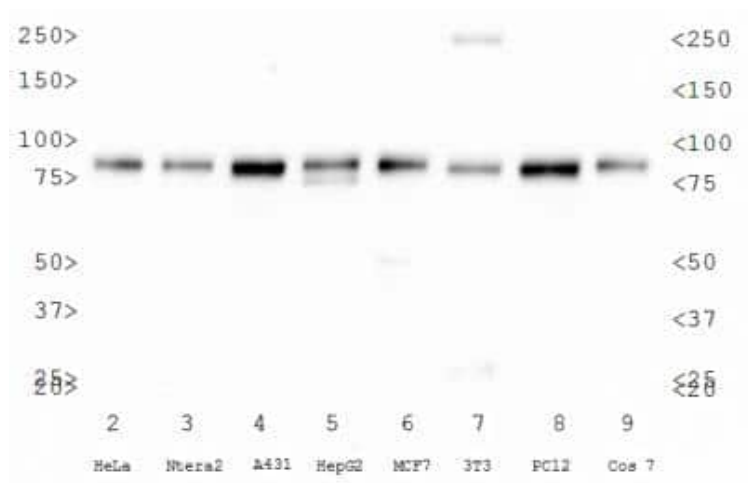
Immunocytochemistry/Immunofluorescence: Calnexin Antibody TA336278 - NIH3T3 cells were fixed in 4% paraformaldehyde for 10 minutes and permeabilized in 0.05% Triton X-100 in PBS for 5 minutes. The cells were incubated with (TA336278) at 1 ug/ml overnight at 4C and detected with an anti-rabbit DyLight 488 (Green) at a 1:1000 dilution for 60 minutes. Nuclei were counterstained with DAPI (Blue). Cells were imaged using a 100X objective and digitally deconvolved.



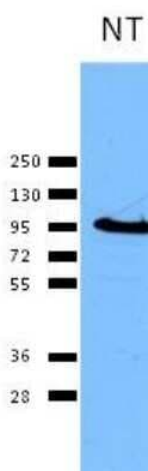
Flow Cytometry: Calnexin Antibody TA336278 - An intracellular stain was performed on NIH3T3 cells with Calnexin Antibody TA336278 (blue) and a matched isotype control NBP2-24891 (orange). Cells were fixed with 4% PFA and then permeabilized with 0.1% saponin. Cells were incubated in an antibody dilution of 1.0 ug/mL for 30 minutes at room temperature, followed by Rabbit IgG (H+L) Cross-Adsorbed Secondary Antibody, Dylight 550 (SA5-10033, Thermo Fisher).



Immunocytochemistry/Immunofluorescence: Calnexin Antibody TA336278 - Rat FR cells were fixed in 4% paraformaldehyde for 10 minutes and permeabilized in 0.05% Triton X-100 in PBS for 5 minutes. The cells were incubated with Calnexin Antibody (TA336278) at 1 ug/ml overnight at 4C and detected with an anti-rabbit DyLight 488 (Green) at a 1:1000 dilution for 60 minutes. Nuclei were counterstained with DAPI (Blue). Cells were imaged using a 100X objective and digitally deconvolved.



Western Blot: Calnexin Antibody TA336278 - WB analysis of CANX in cell lysates as noted.



Western Blot: Calnexin Antibody TA336278 - A dilution of 1/2000 used in TBS with 0.05% Tween-20. Bands visualized by ECL using goat anti-rabbit HRP at 1:2000.