

## Product datasheet for **TA336276**

### JNK1 (MAPK8) Rabbit Polyclonal Antibody

#### Product data:

Product Type:	Primary Antibodies
Applications:	ELISA, IHC, WB
Recommended Dilution:	Immunohistochemistry-Paraffin: 1:200-1:500, Western Blot: 1:2000, ELISA: 1:100-1:2000, Immunohistochemistry: 1:200-1:500
Reactivity:	C. elegans (Does not react with: Human, Mammalian, Mouse, Rat)
Host:	Rabbit
Clonality:	Polyclonal
Immunogen:	A recombinant protein made to the C-terminus (residues 228-451) of the C. elegans JNK1 alpha protein.
Formulation:	Aliquot and store at -20C or -80C. Avoid freeze-thaw cycles.
Concentration:	lot specific
Purification:	Whole antisera
Conjugation:	Unconjugated
Storage:	Store at -20°C as received.
Stability:	Stable for 12 months from date of receipt.
Gene Name:	mitogen-activated protein kinase 8
Database Link:	<a href="#">NP_002741</a> <a href="#">Entrez Gene 26419 Mouse</a> <a href="#">Entrez Gene 116554 Rat</a> <a href="#">Entrez Gene 5599 Human</a> <a href="#">P45983</a>
Background:	The insulin signaling pathway plays a pivotal role in lifespan regulation and stress resistance in many diverse organisms. Components of the JNK (c-Jun N-terminal kinase) signaling pathway have been shown to interact with the insulin signaling pathway. The JNK family is a subgroup of the mitogen-activated protein kinase superfamily and is part of a signal transduction cascade that is activated by cytokines and by exposure to environmental stresses. Thus, JNK1 plays a role in regulating both life span and stress resistance.
Synonyms:	2; JNK; JNK-46; JNK1; JNK1A2; JNK21B1; PRKM8; SAPK1; SAPK1c
Note:	This JNK1 antibody is useful for ELISA, Immunohistochemistry-Paraffin and Western blot where a band can be seen at ~53kDa (alpha form) and at ~42kDa (beta form).

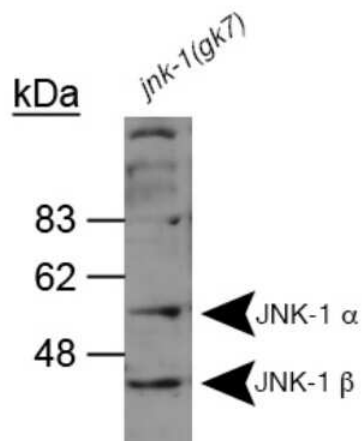


[View online »](#)

**Protein Families:** Druggable Genome, ES Cell Differentiation/IPS, Protein Kinase

**Protein Pathways:** Adipocytokine signaling pathway, Colorectal cancer, Epithelial cell signaling in Helicobacter pylori infection, ErbB signaling pathway, Fc epsilon RI signaling pathway, Focal adhesion, GnRH signaling pathway, Insulin signaling pathway, MAPK signaling pathway, Neurotrophin signaling pathway, NOD-like receptor signaling pathway, Pancreatic cancer, Pathways in cancer, Progesterone-mediated oocyte maturation, RIG-I-like receptor signaling pathway, Toll-like receptor signaling pathway, Type II diabetes mellitus, Wnt signaling pathway

**Product images:**



Western Blot: JNK1 Antibody TA336276 -  
Detection of JNK-1 using TA336276.