

Product datasheet for **TA336273**

B3galt5 Rat Monoclonal Antibody [Clone ID: MC-631]

Product data:

Product Type:	Primary Antibodies
Clone Name:	MC-631
Applications:	CyTOF-ready, FC, ICC/IF, IHC, IP, WB
Recommended Dilution:	Western Blot: 1:500, Immunohistochemistry-Paraffin: 1:10-1:500, CyTOF-ready, Immunohistochemistry-Frozen: 1:10-1:500, Flow Cytometry: 10-20 ug/ml, Immunohistochemistry: 1:10-1:500, Immunocytochemistry/ Immunofluorescence: 1:50-1:100, Immunoprecipitation: 1:10-1:500
Reactivity:	Human, Mouse
Host:	Rat
Isotype:	IgM
Clonality:	Monoclonal
Immunogen:	4-8 cell stage mouse embryos.
Formulation:	Tris-glycine, 150mM NaCl pH 7.5, 0.05% Sodium Azide. Store at 4C short term. Aliquot and store at -20C long term. Avoid freeze-thaw cycles.
Concentration:	lot specific
Purification:	IgM purified
Conjugation:	Unconjugated
Storage:	Store at -20°C as received.
Stability:	Stable for 12 months from date of receipt.
Gene Name:	UDP-Gal:betaGlcNAc beta 1,3-galactosyltransferase, polypeptide 5
Database Link:	NP_001116465 Entrez Gene 10317 Human Entrez Gene 93961 Mouse Q9J167



[View online »](#)

Background:

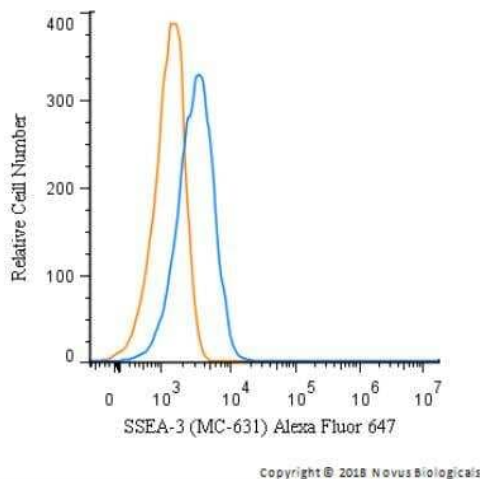
SSEA-3 (stage-specific embryonic antigen-3) is a member of SSEAs which are present on eggs as well as preimplantation embryos at specific stages of early development. SSEAs are glycan epitopes which reside on glycoproteins/glycolipids of mammalian cells, and the epitope of several of these antigens consists solely of sugar residues. SSEA-3 antigen was identified following immunization of rats with 4-8 cell mouse embryos and was present on glycolipids of human teratocarcinoma cells. During protein glycosylation, beta-1,3-galactosyltransferase 5 catalyzes the transfer of Gal to the terminal GalNAc unit of the globoside GB4, thereby synthesizing glycolipid GB5 which is SSEA-3. In its functions, SSEA-3 has been proposed to involve in the process of cell differentiation. SSEA3 expression is mostly restricted to the cytoplasm or apical surface of epithelial cells and it has been reported to express in various normal tissues with high expression levels in kidney. SSEA3 has been reported to be expressed in the ascites fluids from patients of hepatoma or pancreatic cancer, breast cancer including breast cancer stem cells.

Synonyms:

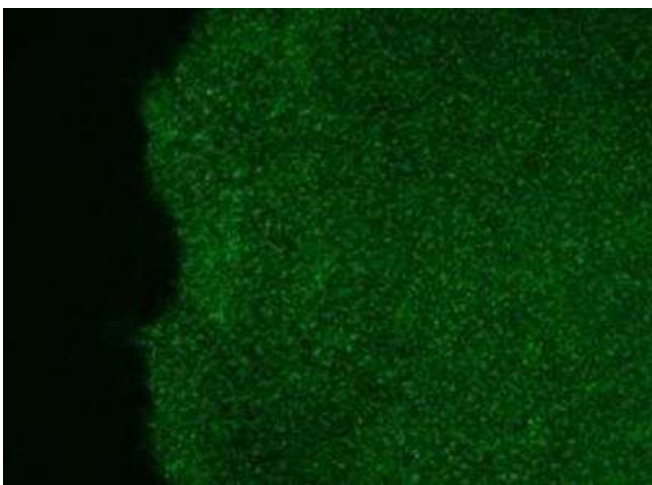
b3Gal-T5; B3GalT-V; B3GalTx; B3T5; Beta-3-Gx-T5; beta3Gal-T5; GLCT5; OTTHUMP00000109186

Note:

This SSEA3 antibody is useful for Flow Cytometry, Immunocytochemistry/Immunofluorescence, Immunohistochemistry frozen and paraffin sections, Immunoprecipitation and Western Blot.

Product images:

Flow Cytometry: SSEA-3 Antibody (MC-631) TA336273 - A surface stain was performed on Jurkat cells with SSEA-3 Antibody (MC-631) TA336273AF647 (blue) and a matched isotype control (orange). Cells were incubated in an antibody dilution of 5 ug/mL for 20 minutes at room temperature. Both antibodies were conjugated to Alexa Fluor 647.



Immunocytochemistry/Immunofluorescence:
SSEA-3 Antibody (MC-631) TA336273 - Analysis of
human embryonic stem cells stained with SSEA-3
antibody detected with Alexa Fluor 488 anti-rat
IgM secondary antibody.