

Product datasheet for **TA336271**

Chk1 (CHEK1) Mouse Monoclonal Antibody [Clone ID: 2G1D5]

Product data:

Product Type:	Primary Antibodies
Clone Name:	2G1D5
Applications:	ICC/IF, IHC, Simple Western, WB
Recommended Dilution:	Simple Western: 1:100, Western Blot: 1:200 - 1:1000, Immunocytochemistry/ Immunofluorescence: 1:10 - 1:500, Immunohistochemistry: 1:250, Immunohistochemistry- Paraffin: 1:250
Reactivity:	Human
Host:	Mouse
Isotype:	IgG1
Clonality:	Monoclonal
Immunogen:	Purified recombinant fragment of Chk1 expressed in E. coli. [UniProt# O14757]
Formulation:	PBS containing 0.05% BSA, 0.05% Sodium Azide. Store at 4C short term. Aliquot and store at - 20C long term. Avoid freeze-thaw cycles.
Concentration:	lot specific
Purification:	Protein G purified
Conjugation:	Unconjugated
Storage:	Store at -20°C as received.
Stability:	Stable for 12 months from date of receipt.
Predicted Protein Size:	56 kDa
Gene Name:	checkpoint kinase 1
Database Link:	NP_001265 Entrez Gene 1111 Human O14757



[View online »](#)

Background: Chk1, also known as CHEK1, it is a kinase that phosphorylates cdc25, an important phosphatase in cell cycle control, particularly for entry into mitosis. Cdc25, when phosphorylated on serine 216 by Chk1 becomes bound by an adaptor protein in the cytoplasm. Therefore it is inhibited from removing the inhibiting phosphate from MPF (mitotic/maturation promoting factor) added by Wee1. Consequently, a cell is prevented from entering mitosis. Chk1 can also phosphorylate p53 at Ser20 in vitro.

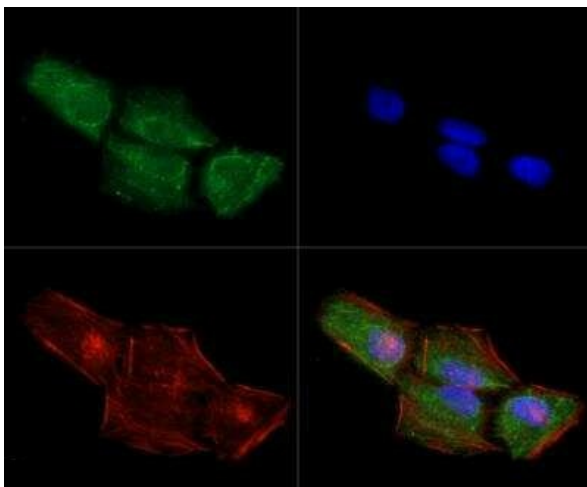
Synonyms: CHK1

Note: This Chk1 (2G1D5) antibody is useful for Western blot and ELISA.

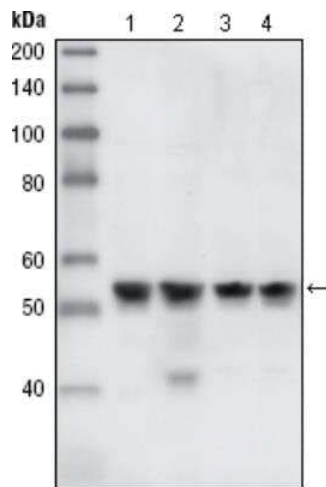
Protein Families: Druggable Genome, Protein Kinase, Stem cell - Pluripotency

Protein Pathways: Cell cycle, p53 signaling pathway

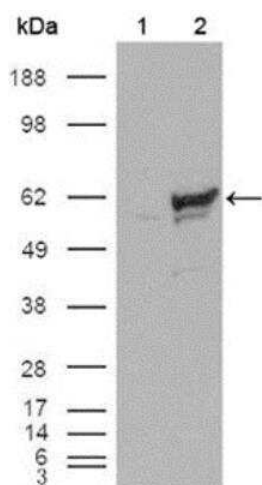
Product images:



Immunocytochemistry/Immunofluorescence: Chk1 Antibody (2G1D5) TA336271 - Chk1 antibody was tested at 1:10 in HeLa cells with DyLight 488 (green). Nuclei and alpha-tubulin were counterstained with DAPI (blue) and Dylight 550 (red). Image objective 40X.



Western Blot: Chk1 Antibody (2G1D5) TA336271 - Analysis using anti-Chk1 mouse mAb against A431 (1), HeLa (2), NIH/3T3 (3) and K562 (4) cell lysates.



Western Blot: Chk1 Antibody (2G1D5) TA336271 - Analysis using Chk1 mouse mAb against HEK293T cells transfected with the pCMV6-ENTRY control (1) and pCMV6-ENTRY Chk1 cDNA (2).