

Product datasheet for **TA336270**

KDM1A Mouse Monoclonal Antibody [Clone ID: 1B2E5]

Product data:

Product Type:	Primary Antibodies
Clone Name:	1B2E5
Applications:	ChIP, ELISA, IHC, Simple Western, WB
Recommended Dilution:	Chromatin Immunoprecipitation (ChIP), ELISA: 1:10000, Immunohistochemistry: 1:200-1:1000, Western Blot: 1:500-1:2000, Immunohistochemistry-Paraffin: 1:200-1:1000, Simple Western: 1:500, Knockdown Validated
Reactivity:	Human, Mouse, Primate
Host:	Mouse
Isotype:	IgG1
Clonality:	Monoclonal
Immunogen:	Purified recombinant fragment of human LSD1 (between amino acids 400-600) expressed in E. coli. [UniProt# O60341]
Formulation:	Preservative: 0.05% Sodium Azide. Aliquot and store at -20C or -80C. Avoid freeze-thaw cycles.
Concentration:	lot specific
Purification:	Ascites
Conjugation:	Unconjugated
Storage:	Store at -20°C as received.
Stability:	Stable for 12 months from date of receipt.
Predicted Protein Size:	93 kDa
Gene Name:	lysine demethylase 1A
Database Link:	NP_001009999 Entrez Gene 99982 Mouse Entrez Gene 23028 Human O60341



[View online »](#)

Background: The amine oxidase domain 2 AOF2 gene encodes a nuclear protein (LSD1, ~95 kDa) containing a Swirm domain, a FAD-binding motif, and an amine oxidase domain. This protein is a component of several histone deacetylase complexes, though it silences genes by functioning as a histone demethylase. LSD1 is a chromatin-modifying enzyme, which serves as a docking module for the stabilization of the associated corepressor complex(es) on chromatin.

Synonyms: AOF2; BHC110; CPRF; KDM1; LSD1

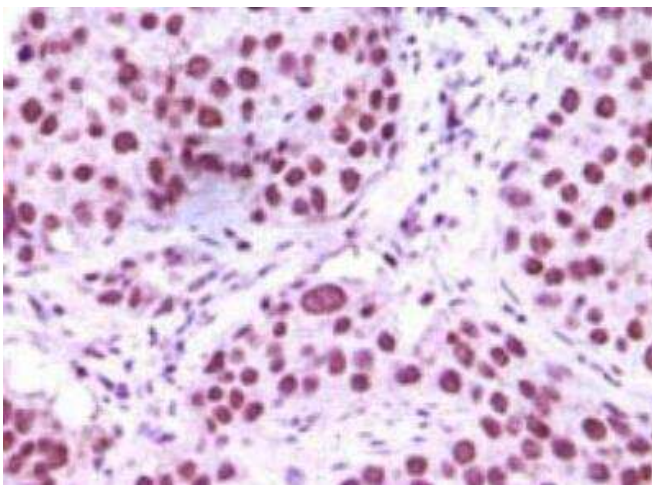
Note: This LSD1 (1B2E5) antibody is useful for Western blot, Immunohistochemistry on paraffin-embedded sections and ELISA.

Protein Families: Druggable Genome, Transcription Factors

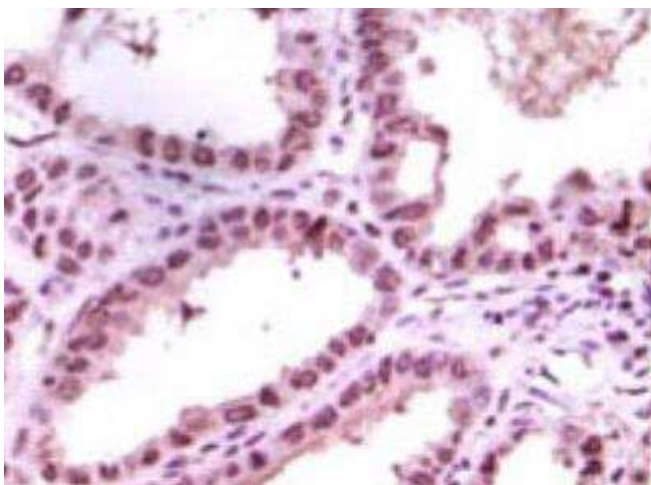
Product images:



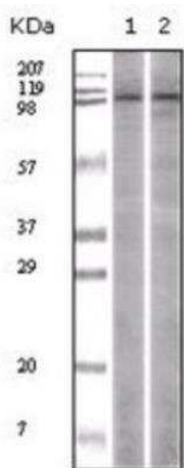
Simple Western: LSD1 Antibody (1B2E5) TA336270 - Simple Western lane view shows a specific band for LSD1 in 0.5 mg/ml of HeLa lysate. This experiment was performed under reducing conditions using the 12-230 kDa separation system. *Non-specific interaction with the 230 kDa standard may be seen with this antibody.



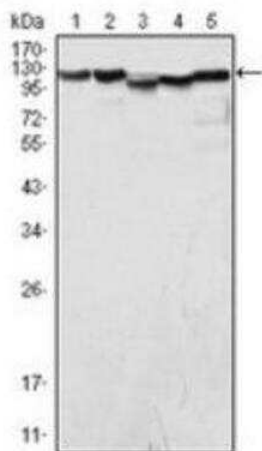
Immunohistochemistry-Paraffin: LSD1 Antibody (1B2E5) TA336270 - Immunohistochemical analysis of paraffin-embedded Human Lung Carcinoma tissue, showing nuclear localization using LSD1 antibody with DAB staining.



Immunohistochemistry-Paraffin: LSD1 Antibody (1B2E5) TA336270 - Immunohistochemical analysis of paraffin-embedded Human Kidney Carcinoma tissue, showing nuclear localization using LSD1 antibody with DAB staining.



Western Blot: LSD1 Antibody (1B2E5) TA336270 - Analysis of LSD1 expression in HeLa (1) and Jurkat (2) whole cell lysates.



Western Blot: LSD1 Antibody (1B2E5) TA336270 - Western blot analysis using LSD1 mouse mAb against COS (1), HeLa (2), NIH/3T3 (3), A549 (4) and Jurkat (5) cell lysate.