

Product datasheet for **TA336268**

MSI1 Rabbit Polyclonal Antibody

Product data:

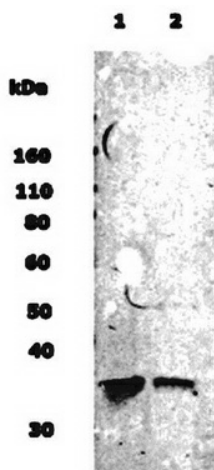
Product Type:	Primary Antibodies
Applications:	IF, WB
Recommended Dilution:	WB: 1:500, IHC: 1:10-1:500, IHC-P: 1:10-1:500
Reactivity:	Human, Mouse, Rat
Host:	Rabbit
Clonality:	Polyclonal
Immunogen:	Reacts with residues 5-21 [APQPLASPDSPHPDCK] of the human, mouse and rat Musashi 1 protein.
Formulation:	PBS, 0.05% Sodium Azide. Store at 4C short term. Aliquot and store at -20C long term. Avoid freeze-thaw cycles.
Concentration:	lot specific
Purification:	Immunogen affinity purified
Conjugation:	Unconjugated
Storage:	Store at -20°C as received.
Stability:	Stable for 12 months from date of receipt.
Gene Name:	musashi RNA binding protein 1
Database Link:	NP_002433 Entrez Gene 17690 Mouse Entrez Gene 259272 Rat Entrez Gene 4440 Human O43347
Background:	Musashi1, a neural RNA-binding protein, plays an important role in regulating cell differentiation in precursor cells. Musashi-1 (Msi-1) has been shown to increase the accumulation of tau isoforms in intracellular inclusions in dementia. It may play a role in the pathogenesis of various neurodegenerative disorders. Musashi1 has also been detected in human tumor tissues such as gliomas and melanomas, suggesting its involvement in cancer development. Msi-1 also appears to play a vital role in the development of several types of carcinoma such as human hepatoma, and may be a useful molecular marker for tumor detection.
Synonyms:	musashi 1; musashi homolog 1 (Drosophila)



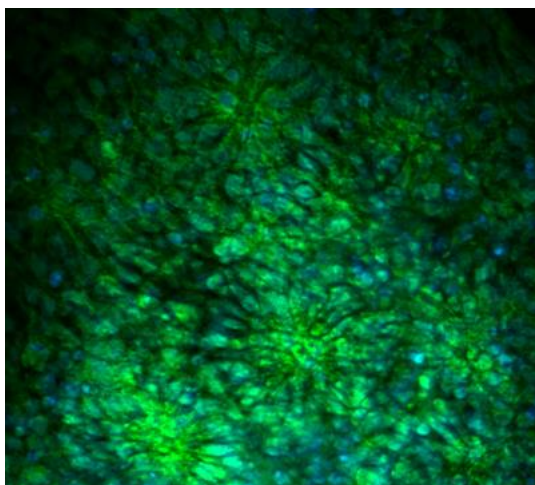
[View online »](#)

Note: Use in Immunocytochemistry/immunofluorescence reported in scientific literature (PMID 24006477)

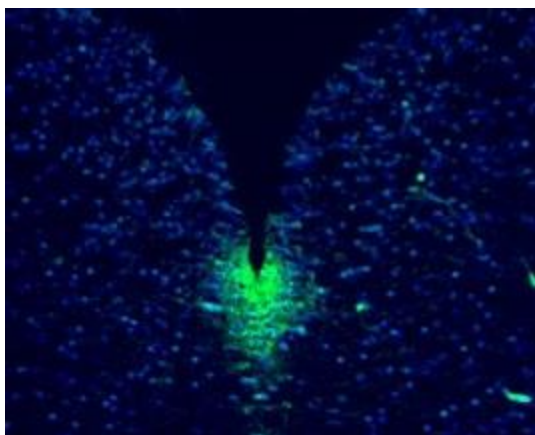
Product images:



Western Blot: Musashi 1 Antibody TA336268 - WB detection of Musashi-1 protein in 10 ug of rat neural stem cell lysate (lane 1) and normal human brain lysate (lane 2) with Musashi-1 antibody TA336268 at a dilution of 1:500.



Immunocytochemistry/Immunofluorescence: Musashi 1 Antibody TA336268 - Image of staining with Musashi polyclonal antibody (1:100 dilution) shows Musashi (green) staining on neural rosettes (human). Nuclei are counterstained blue (DAPI). Cells were fixed



Immunocytochemistry/Immunofluorescence:
Musashi 1 Antibody TA336268 - Musashi-positive
cells stained with Musashi antibody (1:150
dilution) in the ventricular zone of E14.5 mouse
medulla. Image taken at 200x magnification. The
sections were 4% PFA f