

## Product datasheet for **TA336267**

### **RAD17 Rabbit Polyclonal Antibody**

#### **Product data:**

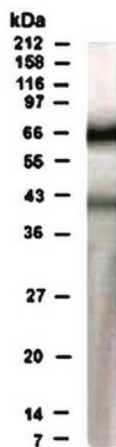
Product Type:	Primary Antibodies
Applications:	WB
Recommended Dilution:	WB: 1:500 -1:1000
Reactivity:	Human
Host:	Rabbit
Clonality:	Polyclonal
Immunogen:	Synthetic peptide made to a N-terminal region of human RAD17.
Formulation:	PBS, 0.05% Sodium Azide. Store at 4C short term. Aliquot and store at -20C long term. Avoid freeze-thaw cycles.
Concentration:	lot specific
Purification:	Immunogen affinity purified
Conjugation:	Unconjugated
Storage:	Store at -20°C as received.
Stability:	Stable for 12 months from date of receipt.
Predicted Protein Size:	66 kDa
Gene Name:	RAD17 checkpoint clamp loader component
Database Link:	<a href="#">NP_579922</a> <a href="#">Entrez Gene 5884 Human</a> <a href="#">O75943</a>
Background:	Signals originating from damaged DNA activate checkpoint pathways and target the mitotic apparatus via a number a distinct mechanisms. These checkpoints link damage to DNA with the components of the cell cycle through signal transduction systems. In mammals, five genes have been identified as components of DNA damage-induced checkpoint pathways: ATM, p53, p21/WAF1/CIP1, hCHK1, and 14-3-3sigma. When overexpressed in mammalian cells, hRAD17 activates p53 and causes an accumulation of G1 phase cells, suggesting an involvement of the hRAD17 gene in this checkpoint pathway.(1).
Synonyms:	CCYC; HRAD17; R24L; RAD17SP; RAD24
Note:	This antibody is useful for Western Blot. Flow Cytometry was reported in scientific literature.



[View online »](#)

Protein Families: Druggable Genome

### Product images:



Western Blot: Rad17 Antibody TA336267 - WB  
detection of RAD17 protein in human heart lysate  
using TA336267 at a dilution of 1:500