

## Product datasheet for **TA336266**

### **RAD17 Rabbit Polyclonal Antibody**

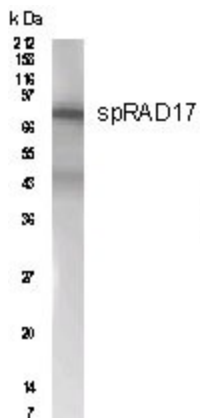
#### **Product data:**

Product Type:	Primary Antibodies
Applications:	WB
Recommended Dilution:	WB: 1:500 -1:1000
Reactivity:	Yeast
Host:	Rabbit
Clonality:	Polyclonal
Immunogen:	Synthetic peptide made to Schizosaccharomyces pombe RAD17.
Formulation:	PBS, 0.01% Sodium Azide. Aliquot and store at -20C or -80C. Avoid freeze-thaw cycles.
Concentration:	lot specific
Purification:	Immunogen affinity purified
Conjugation:	Unconjugated
Storage:	Store at -20°C as received.
Stability:	Stable for 12 months from date of receipt.
Predicted Protein Size:	80 kDa
Gene Name:	RAD17 checkpoint clamp loader component
Database Link:	<a href="#">NP_579922</a> <a href="#">Entrez Gene 5884 Human</a> <a href="#">O75943</a>
Background:	Signals originating from damaged DNA activate checkpoint pathways and target the mitotic apparatus via a number a distinct mechanisms. These checkpoints link damage to DNA with the components of the cell cycle through signal transduction systems. The RAD17 gene product of Schizosaccharomyces pombe is an essential component of the checkpoint control pathway which responds to both DNA damage and disruption of replication.
Synonyms:	CCYC; HRAD17; R24L; RAD17SP; RAD24
Note:	Western blot - Use at 1:500 to 1:1,000 dilution. However, the investigator should determine the optimal dilution for a specific application such as immunohistochemistry.
Protein Families:	Druggable Genome



[View online »](#)

### Product images:



Western blot analysis of yeast RAD17 with anti-RAD17 at a 1:500 dilution.

Western Blot: Rad17 Antibody TA336266