

## Product datasheet for **TA336252**

### ACAT1 Rabbit Polyclonal Antibody

#### Product data:

Product Type:	Primary Antibodies
Applications:	IHC, WB
Recommended Dilution:	WB, IHC
Reactivity:	Human
Host:	Rabbit
Isotype:	IgG
Clonality:	Polyclonal
Immunogen:	The immunogen for Anti-ACAT1 Antibody: synthetic peptide directed towards the middle region of human ACAT1. Synthetic peptide located within the following region: GHQDVMVAGGMESMSNPYVMNRGSTPYGGVKLEDLIVKDGLTDVYNKIH
Formulation:	Liquid. Purified antibody supplied in 1x PBS buffer with 0.09% (w/v) sodium azide and 2% sucrose. <i>Note that this product is shipped as lyophilized powder to China customers.</i>
Purification:	Affinity Purified
Conjugation:	Unconjugated
Storage:	Store at -20°C as received.
Stability:	Stable for 12 months from date of receipt.
Predicted Protein Size:	41
Gene Name:	acetyl-CoA acetyltransferase 1
Database Link:	<a href="#">NP_000010</a> <a href="#">Entrez Gene 38 Human</a> <a href="#">P24752</a>
Background:	ACAT1 is a mitochondrially localized enzyme that catalyzes the reversible formation of acetoacetyl-CoA from two molecules of acetyl-CoA. The gene encoding ACAT1 spans approximately 27 kb and contains 12 exons interrupted by 11 introns. Defects in this gene are associated with the alpha-methylacetoaceticaciduria disorder, an inborn error of isoleucine catabolism characterized by urinary excretion of 2-methyl-3-hydroxybutyric acid, 2-methylacetoacetic acid, tiglylglycine, and butanone.



[View online »](#)

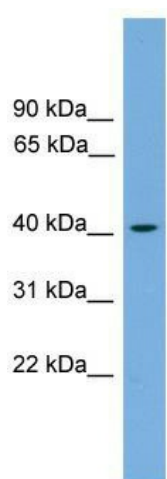
**Synonyms:** ACAT; MAT; T2; THIL

**Note:** Immunogen Sequence Homology: Dog: 100%; Pig: 100%; Rat: 100%; Horse: 100%; Human: 100%; Mouse: 100%; Bovine: 100%; Rabbit: 100%; Zebrafish: 100%; Guinea pig: 100%; Yeast: 92%

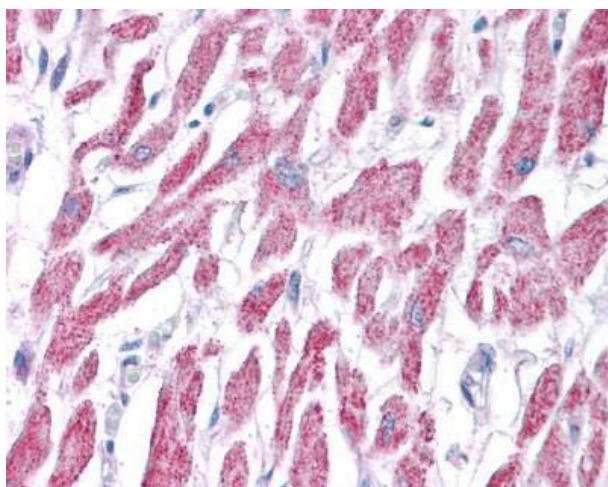
**Protein Families:** Druggable Genome

**Protein Pathways:** Butanoate metabolism, Fatty acid metabolism, Lysine degradation, Metabolic pathways, Propanoate metabolism, Pyruvate metabolism, Synthesis and degradation of ketone bodies, Terpenoid backbone biosynthesis, Tryptophan metabolism, Valine, leucine and isoleucine degradation

### Product images:



WB Suggested Anti-ACAT1 Antibody Titration: 1 ug/ml; Positive Control: HepG2 cell lysate. ACAT1 is supported by BioGPS gene expression data to be expressed in HepG2



Fetal heart